



TAILORED  
IMAGE

# HOTELS & HOSPITALITY



THE PERFECT UNIFORM FOR EVERY BUSINESS, EVERY ROLE, EVERY TIME.



# THE ROLE OF CORPORATEWEAR IN THE HOTEL & HOSPITALITY SECTORS

In the hotel & hospitality industries, uniforms play a vital role in projecting professionalism and consistency, creating a sense of reliability for guests and staff alike. This visual unity among team members isn't just about aesthetics, it's practical, too. Guests can swiftly identify who to approach for assistance, facilitating smoother interactions and enhancing their experience.

Each staff member becomes a representative of the establishment's values, ethics, and brand, whether they are customer-facing or working behind the scenes. Encouraging a sense of hard work and teamwork, uniforms place focus on service quality rather than personal style.

Thoughtfully chosen uniform design and materials further contribute to a professional image, as the right uniform enables individuals to look the part and perform their duties with ease, confidence, dignity, and pride. Brands that prioritise this aspect of their presentation are more likely to foster a loyal, satisfied customer base, and a dedicated, motivated team.

At Brook Taverner, we understand the critical role uniform plays in shaping identity. With vast experience supplying a diverse range of teams in the hotel and hospitality sectors worldwide, we provide a stock-supported selection of styles, fabrics, and colours. Working together with our distributors, we are confident we will deliver the perfect uniform for every business, every role, every time.

FRONT OF HOUSE	4 - 5
MANAGEMENT	6 - 7
SERVICE / FORMAL	8 - 9
SERVICE / CASUAL	10 - 11
HOUSEKEEPING	12 - 13
SPA & WELLNESS	14 - 15
MAINTENANCE & FM	16 - 17
OUTDOOR	18 - 19
INDEX	22 - 23







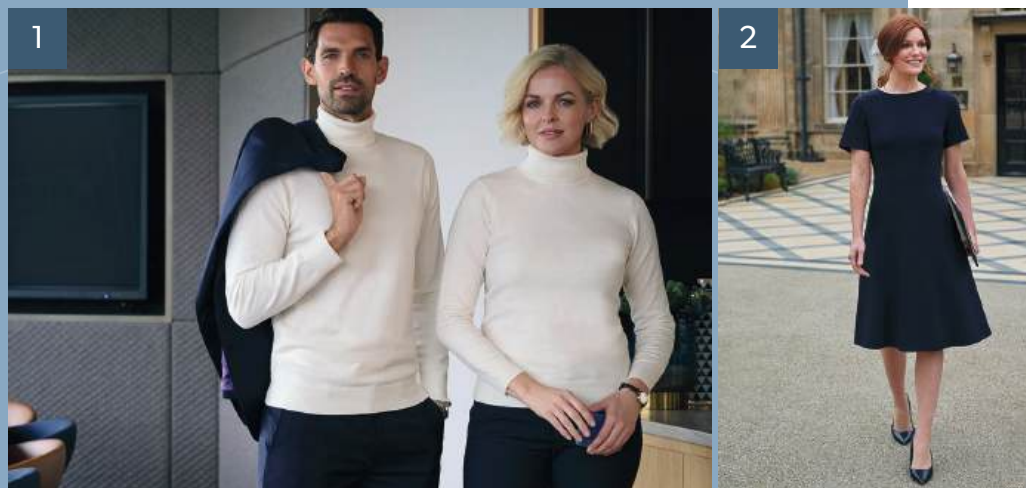
# FRONT OF HOUSE

First impressions are crucial, and the right uniform for the Front of House team can set the tone from the moment guests arrive. Opt for tailored, high-quality pieces that communicate a welcoming approachability and professionalism, allowing staff to look fresh throughout long shifts in highly-visible roles.



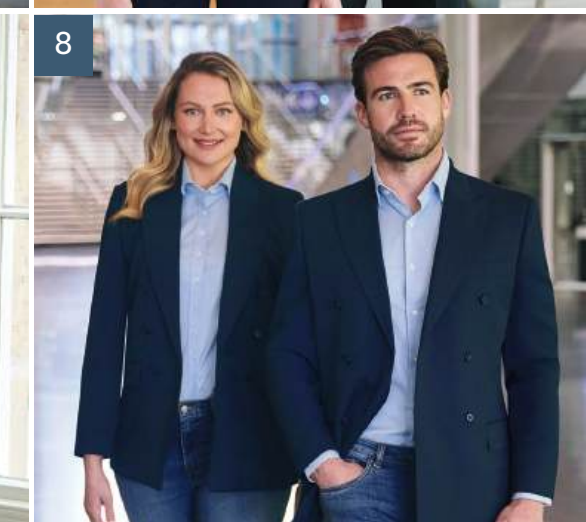
1. **RAPPORT COLLECTION** Jacket & Trouser / **CASUALS & SEPARATES** Premium Knitwear Rollneck
2. **CASUALS & SEPARATES** Performance Knitwear Turtleneck
3. **SHIRT & BLOUSE COLLECTION** Premium Cotton Shirt
4. **SOPHISTICATED COLLECTION** Suit / **CASUALS & SEPARATES** Check Designs Waistcoat
5. **SHIRT & BLOUSE COLLECTION** Crepe De Chine Blouses / **ECLIPSE COLLECTION** Trousers
6. **ECLIPSE COLLECTION** Jackets & Trousers / **SHIRT & BLOUSE COLLECTION** Crepe De Chine Blouse & Premium Cotton Shirt
7. **PERFORMANCE COLLECTION** Jacket & Trouser / **SHIRT & BLOUSE COLLECTION** Stretch Oxford Shirt
8. **SHIRT & BLOUSE COLLECTION** Crepe De Chine Blouse / **PERFORMANCE COLLECTION** Skirt
9. **RAPPORT COLLECTION** Jackets, Trouser & Skirt / **SHIRT & BLOUSE COLLECTION** Stretch Cotton Blend Shirts
10. **ECLIPSE COLLECTION** Trouser
11. **ECLIPSE COLLECTION** Jackets / **SHIRT & BLOUSE COLLECTION** Satin Blouse & Premium Cotton Shirt





# MANAGEMENT

The management team's uniform doesn't just signal leadership; it fosters unity and shared responsibility among all employees. By setting a high standard in appearance, management embodies the professionalism expected at every level of the establishment and reinforces an inclusive, hands-on approach to leadership.

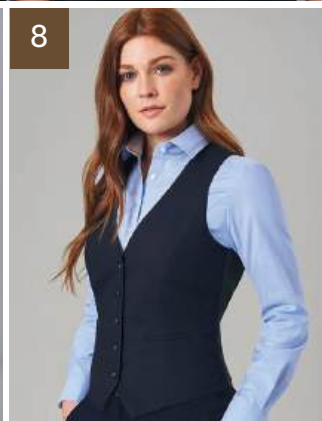
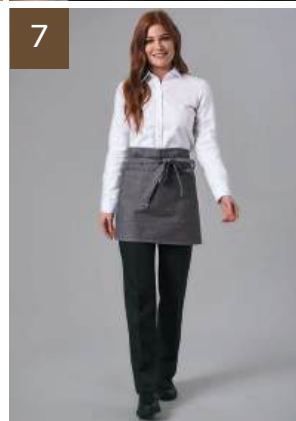


1. **CASUALS & SEPARATES** Premium Knitwear Rollnecks
2. **JERSEY STRETCH COLLECTION** Dress
3. **SOPHISTICATED COLLECTION** Jackets / **SHIRT & BLOUSE COLLECTION** Premium Cotton Shirt & Pussy Bow Blouse
4. **SIGNATURE COLLECTION** Suit, Jacket & Skirt / **SHIRT & BLOUSE COLLECTION** Premium Cotton Shirts
5. **SHIRT & BLOUSE COLLECTION** Premium Cotton Non-Iron Shirts
6. **ECLIPSE COLLECTION** Jacket / **SHIRT & BLOUSE COLLECTION** Royal Oxford Shirt
7. **CASUALS & SEPARATES** Tweed Jacket / **SHIRT & BLOUSE COLLECTION** Cotton Rich Shirt
8. **ECLIPSE COLLECTION** Jackets / **SHIRT & BLOUSE COLLECTION** Royal Oxford Shirts
9. **RAPPORT COLLECTION** Jacket & Trouser / **CASUALS & SEPARATES** Premium Knitwear Rollneck
10. **SHIRT & BLOUSE COLLECTION** Crepe De Chine Blouse / **RAPPORT COLLECTION** Trouser
11. **RAPPORT COLLECTION** Jackets & Trousers / **CASUALS & SEPARATES** Premium Knitwear Rollnecks



# SERVICE / FORMAL

Whether in a high-end restaurant or transitioning to an evening uniform, formal service staff attire typically embraces tradition with timeless style. Classic colour combinations, complemented by waistcoats and ties, create the impression of refined service to enhance the overall dining experience.



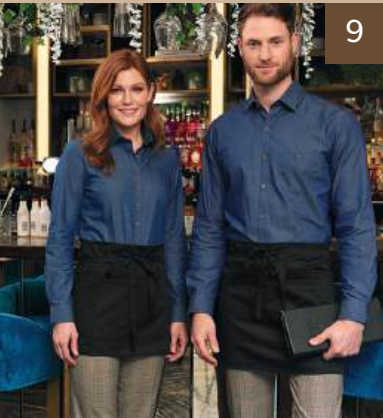
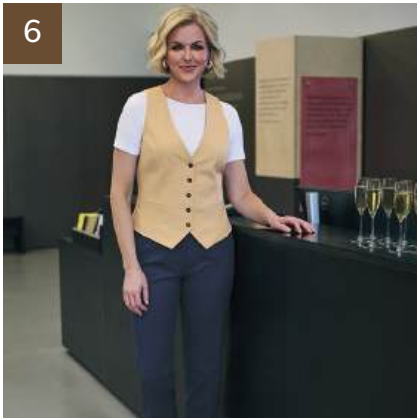
“It has been, and continues to be, our responsibility to fill the earth with the light and warmth of hospitality.”  
– Conrad Hilton

1. **ECLIPSE COLLECTION** Jacket & Trouser / **SHIRT & BLOUSE COLLECTION** Premium Cotton Shirt
2. **PERFORMANCE COLLECTION** Waistcoat / **SHIRT & BLOUSE COLLECTION** Stretch Cotton Blend Shirt
3. **JERSEY STRETCH COLLECTION** Jackets & Trousers / **SHIRT & BLOUSE COLLECTION** Stretch Cotton Blend Shirts
4. **ONE COLLECTION** Waistcoats, Trouser & Skirt / **SHIRT & BLOUSE COLLECTION** Stretch Cotton Blend Shirts
5. **SHIRT & BLOUSE COLLECTION** Stretch Cotton Blend Shirts
6. **SHIRT & BLOUSE COLLECTION** Business Essential Shirts
7. **ONE COLLECTION** Trouser / **SHIRT & BLOUSE COLLECTION** Classic Oxford Shirt
8. **TODAY COLLECTION** Waistcoat / **SHIRT & BLOUSE COLLECTION** Stretch Oxford Shirt
9. **SHIRT & BLOUSE COLLECTION** Business Essential Shirt / **ONE COLLECTION** Trouser



# SERVICE / CASUAL

As a highly customer-facing role, service staff play a fundamental part in creating the right impression. Brands can incorporate softer tones and informal, yet coordinated, styles in their uniform to place an emphasis on approachability. A well-chosen, high-quality uniform keeps staff comfortable and smart throughout the working week.



1. **CASUALS & SEPARATES** Premium Cotton Polo
2. **CASUALS & SEPARATES** Breton Tops & Chinos
3. **SHIRT & BLOUSE COLLECTION** Business Casual Shirts
4. **CASUALS & SEPARATES** Check Designs Waistcoats / **SHIRT & BLOUSE COLLECTION** Royal Oxford Shirts
5. **CASUALS & SEPARATES** Breton Top
6. **RAPPORT COLLECTION** Waistcoat & Trouser / **SHIRT & BLOUSE COLLECTION** Stretch Top
7. **CASUALS & SEPARATES** Tweed Waistcoats / **SHIRT & BLOUSE COLLECTION** Royal Oxford Shirts
8. **SHIRT & BLOUSE COLLECTION** Royal Oxford Shirt / **CASUALS & SEPARATES** Chino
9. **SHIRT & BLOUSE COLLECTION** Business Casual Shirts / **CASUALS & SEPARATES** Check Designs Trousers

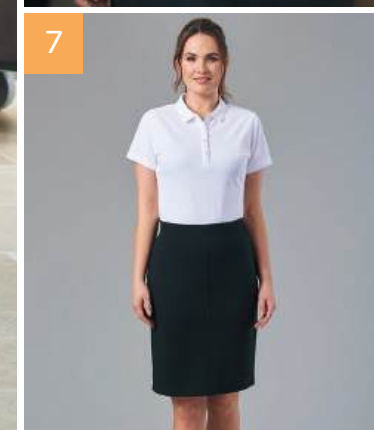
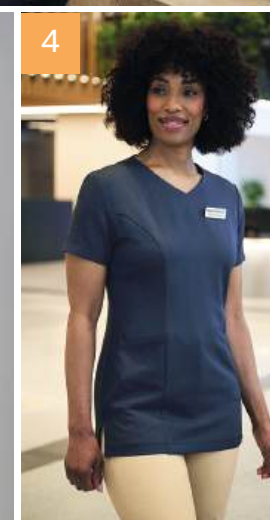
“The key is to set realistic customer expectations and then not to just meet them, but to exceed them - preferably in unexpected and helpful ways.”  
– Sir Richard Branson





# HOUSEKEEPING

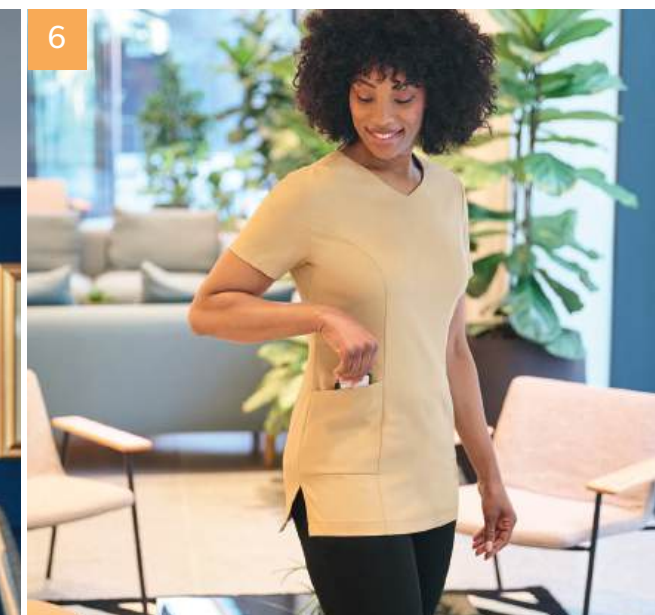
We understand the importance of attention to detail when it comes to outfitting housekeeping teams. Practical yet subtle features like convenient key loops and strategically-placed pockets increase efficiency and allow staff to deliver outstanding service.



1. **CASUALS & SEPARATES** Tunic / **JERSEY STRETCH COLLECTION** Capri Trouser
2. **CASUALS & SEPARATES** Premium Cotton Polos & Chinos
3. **SHIRT & BLOUSE COLLECTION** Classic Oxford Shirt
4. **CASUALS & SEPARATES** Tunic / **RAPPORT COLLECTION** Trouser
5. **TODAY COLLECTION** Cargos / **CASUALS & SEPARATES** Performance Polos
6. **SHIRT & BLOUSE COLLECTION** Stretch Top
7. **CASUALS & SEPARATES** Premium Cotton Polo / **JERSEY STRETCH COLLECTION** Skirt



"When customers feel well  
cared for, they become loyal  
advocates." – Isadore Sharp



# SPA & WELLNESS

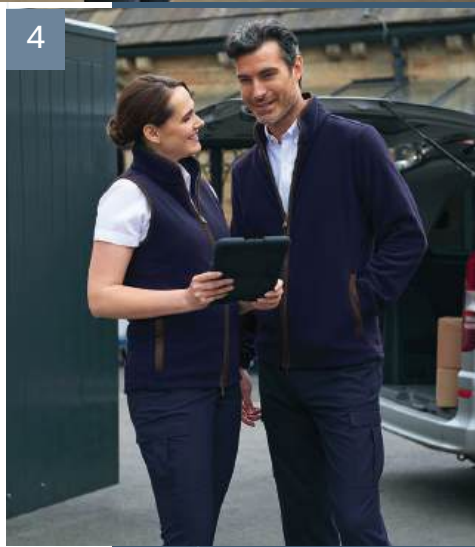
Spa & Wellness uniforms must visually support the purpose of each space. Soft fabrics and calming colours reinforce the serene ambiance of the spa, while vibrant shades and flexible materials promote the dynamic energy expected of fitness facilities, whether indoors or out.

1. **CASUALS & SEPARATES** Premium Cotton Polo / JERSEY STRETCH COLLECTION Capri Trouser
2. **CASUALS & SEPARATES** Breton Top & Chino
3. **JERSEY STRETCH COLLECTION** Jackets / SHIRT & BLOUSE COLLECTION Premium Cotton Non-Iron Shirts / CASUALS & SEPARATES Jeans
4. **JERSEY STRETCH COLLECTION** Jacket & Skirt / CASUALS & SEPARATES Premium Cotton Polos & Chino
5. **CASUALS & SEPARATES** Performance Polo & Chino
6. **CASUALS & SEPARATES** Tunic
7. **CASUALS & SEPARATES** Chino Cargos



# MAINTENANCE & FM

When functionality and durability are paramount, uniforms must endure the physical demands of daily tasks. Outfitting active employees in practical, well-designed clothing not only boosts their performance but also ensures the smooth, efficient operation of facilities, supporting both guest and employee satisfaction.



1. **TODAY COLLECTION** Cargos / **CASUALS & SEPARATES** Performance Knitwear V-neck
2. **OUTERWEAR COLLECTION** Core Padded Jacket & Core Fleece 1/4 Zip
3. **TODAY COLLECTION** Cargo / **SHIRT & BLOUSE COLLECTION** Business Essential Shirt
4. **OUTERWEAR COLLECTION** Premium Fleece Gilet & Jacket / **TODAY COLLECTION** Cargos
5. **CASUALS & SEPARATES** Chino Cargos
6. **CONCEPT COLLECTION** Jackets & Trousers
7. **OUTERWEAR COLLECTION** Waterproof Mac / **CASUALS & SEPARATES** Jeans
8. **SHIRT & BLOUSE COLLECTION** Business Essential Shirt
9. **OUTERWEAR COLLECTION** Premium Quilted Gilet / **CASUALS & SEPARATES** Performance Knitwear 1/4 Zip
10. **CONCEPT COLLECTION** Trousers / **SHIRT & BLOUSE COLLECTION** Classic Oxford Shirt
11. **OUTERWEAR COLLECTION** Core Fleece Jackets / **CASUALS & SEPARATES** Chinos



# OUTDOOR

Work-ready, whatever the weather. Providing staff with appropriate outerwear is essential for roles that involve time outdoors as it helps them stay warm and dry while preserving the professional look of the uniform beneath. This way, staff can stay focused on their duties without being hindered by uncomfortable weather conditions.

- 1. OUTERWEAR COLLECTION Waterproof Mac
- 2. OUTERWEAR COLLECTION Waterproof Mac
- 3. OUTERWEAR COLLECTION Raincoats
- 4. OUTERWEAR COLLECTION Raincoat Hood
- 5. OUTERWEAR COLLECTION Premium Quilted Jacket
- 6. OUTERWEAR COLLECTION Core Padded Jacket
- 7. OUTERWEAR COLLECTION Overcoats
- 8. OUTERWEAR COLLECTION Premium Fleece Gilet & Jacket

“There’s no bad weather,  
only unsuitable clothing.”  
– Alfred Wainwright





**LOOK & FEEL YOUR BEST  
WITH BROOK TAVERNER**

We're very proud of our collections, knowing that each and every style has been carefully designed to look good and feel great with every wear, week after week. We are passionate about what we do and are delighted to support the thousands of people who go to work every day in a Brook Taverner garment.



Easily identify the garments shown throughout the brochure.

FRONT OF HOUSE – Pages 4 - 5

- 1. MARGOT Jacket, Denim (2390A) & ELEANOR Trouser, Denim (2392A) / ATHENS Jumper, Oatmeal (2398B)
- 2. GOLDEN Jumper, Black (2389D)
- 3. CHELFORD Shirt, Sky Blue (7643B)
- 4. CASSINO Jacket, Black (5985D) / CASSINO Trouser, Black (8655D) / EMILIO Waistcoat, Grey Check (1726C)
- 5. She wears (left): BERGAMO Blouse, Pink (2419K) She wears (right): COMO Blouse, Pink (2418K)
- 6. She wears: PERDITA Jacket, Navy (2425B) / OPHELIA Trouser, Navy (2276B) / BERGAMO Blouse, White (2419A) He wears: FERDINAND Jacket, Navy (5484B) / PEGASUS Trouser, Navy (8754B) / CHELSEA Shirt, White (7762A)
- 7. RITZ Jacket, Black (2227D) / ASTORIA Trouser, Black (2262D) / MIRABEL Shirt, Sky Stripe (2361D)
- 8. RIOLA Blouse, White (2264A) / WYNDHAM Skirt, Charcoal (2229C)
- 9. He wears: WILLIAM Jacket, Sand (5427B) / OLIVER Trouser, Sand (8025B) / VOLTERRA Shirt, Black (4571D) She wears: MARGOT Jacket, Sand (2390B) / HARRIET Skirt, Sand (2393B) / AMELIA Shirt, Black (2403D)
- 10. CORA Trouser, Black (2424D)
- 11. She wears: VEGA Jacket, Navy Pin Dot (2356A) / RAVENNA Blouse, Gold (2362F) He wears: PEGASUS Jacket, Navy Pin Dot (3551A) / CHELFORD Shirt, White (7643A)

MANAGEMENT – Pages 6 - 7

- 1. He wears: OSLO Jumper, Cream (4568G) She wears: ATHENS Jumper, Cream (2398G)
- 2. BELINDA Dress, Navy (2380A)
- 3. He wears: CASSINO Jacket, Black (5985D) / ESTE Shirt, White (7978A) She wears: ROSA Jacket, Black (2353D) / FLAVIA Blouse, White (2369A)
- 4. He wears: CASSINO Jacket, Navy Check (3834A) / CASSINO Trouser, Navy Check (8846A) / ANDORA Shirt, White Herringbone (7656A) She wears: CALVI Jacket, Navy Check (2331A) / NUMANA Skirt, Navy Check (2333A) / VILLETA Shirt, White Herringbone (2247A)
- 5. She wears: SILVI Shirt, White (2350A) He wears: ESTE Shirt, White (7978A)
- 6. PHENE Jacket, Charcoal Pin Dot (3552C) / TORONTO Shirt, White (7882A)
- 7. QUEBEC Jacket, Grey Brown Check (3836E) / ALBA Shirt, Navy (7640H)

MANAGEMENT – Pages 6 - 7 Continued

- 8. She wears: PERDITA Jacket, Navy (2425B) / ROCHELLE Jeans, Vintage (2374C) / ASPEN Shirt, Sky Blue (2319E) He wears: FERDINAND Jacket, Navy (5484B) / BOULDER Jeans, Vintage (8958C) / TORONTO Shirt, Sky Blue (7882E)
- 9. WILLIAM Jacket, Grey Melange (5427C) / OLIVER Trouser, Grey Melange (8025C) / OSLO Jumper, Black (4568D)
- 10. COMO Blouse, Sky Blue (2418B) / ELEANOR Trouser, Grey Melange (2392C)
- 11. She wears: MARGOT Jacket, Denim (2390A) / ELEANOR Trouser, Denim (2392A) / ATHENS Jumper, Oatmeal (2398B) He wears: WILLIAM Jacket, Denim (5427A) / OLIVER Trouser, Denim (8025A) / OSLO Jumper, Oatmeal (4568B)

SERVICE / FORMAL – Pages 8 - 9

- 1. ARIEL Jacket, Black (2272D) / ROSALIND Trouser, Black (2381D) / PROSECCO Shirt, White Herringbone (2283A)
- 2. CAPITAL Waistcoat, Charcoal (1300C) / PISA Shirt, White (7721A)
- 3. He wears: RORY Jacket, Navy (4374A) / TAURUS Trouser, Navy (8026A) / VOLTERRA Shirt, White (4571A) She wears: LIBRA Jacket, Navy (2379A) / CERES Trouser, Navy (2400A) / AMELIA Shirt, White (2403A)
- 4. She wears: LUNA Waistcoat, Black (2257D) / SOAVE Shirt, White (2269A) He wears: MERCURY Waistcoat, Black (1295D) / PISA Shirt, White (7721A)
- 5. She wears: AMELIA Shirt, White (2403A) He wears: VOLTERRA Shirt, White (4571A)
- 6. He wears: VESTA Shirt, Black (7743D) She wears: EOS Shirt, Black (2271D)
- 7. VENUS Trousers, Black (2256D) / ALBANY Shirt, White (2359A)
- 8. TOULOUSE Waistcoat, Navy (2328A) / MIRABEL Shirt, Sky Blue (2361E)
- 9. VULCAN Shirt, White (7889A) / MARS Trouser, Black (8648D)

SERVICE / CASUAL – Pages 10 - 11

- 1. FREDERICK Polo, Grey Marl (4222C)
- 2. He wears: EDMUND Breton Top, Navy/White (4721B) / LEO SLIM FIT Chino, Tan (8058B) She wears (middle): LUCY Breton Top, Navy/White (2430B) / LIBERTY Chino, Tan (2404B) She wears (right): KATY Breton Top, White/Navy (2429A) / LIBERTY Chino, Tan (2404B)

SERVICE / CASUAL – Pages 10 - 11 Continued

- 3. She wears: TULSA Shirt, Blue Gingham (2322A) He wears: MONTANA Shirt, Blue Gingham (7884A)
- 4. He wears: EMILIO Waistcoat, Navy Check (1726A) / CALGARY Shirt, Sky Blue (7883E) She wears: OLIVIA Waistcoat, Navy Check (2363A) / VICTORIA Shirt, Sky Blue (2320E)
- 5. EDMUND Breton Top, White/Navy (4721A)
- 6. BEATRICE Waistcoat, Sand (2391B) / ELEANOR Trouser, Denim (2392A) / SASSA Stretch Top, White (2267A)
- 7. He wears: MEMPHIS Waistcoat, Grey Brown Check (1463E) / TORONTO Shirt, White (7882A) / LEO SLIM FIT Chino, Tan (8058B) She wears: NASHVILLE Waistcoat, Grey Brown Check (2310E) / ASPEN Shirt, White (2319A) / LIBERTY Chino, Tan (2404B)
- 8. TORONTO Shirt, Blue (7882B) / LEO SLIM FIT Chino, Stone (8058F)
- 9. She wears: BANFF Shirt, Denim (2323A) / STELLA Trouser, Grey Check (2364C) He wears: JASPER Shirt, Denim (7886A) / FABIAN Trouser, Grey Check (8934C)

HOUSEKEEPING – Pages 12 - 13

- 1. LOCKHART Tunic, Black (2402D) / CAMILA Trouser, Black (2371D)
- 2. He wears: HAMPTON Polo, Sky Marl (4223E) / LEO CLASSIC FIT Chino, Black (8059D) She wears: ARLINGTON Polo, Sky Marl (2372E) / LIBERTY Chino, Black (2404D)
- 3. TUCSON Shirt, White (4051A)
- 4. LOCKHART Tunic, Denim (2402E) / ELEANOR Trouser, Sand (2392B)
- 5. He wears: TOURS Cargo Trouser, Black (8968D) / COLUMBIA Polo, White (4224A) She wears: NANTES Cargo Trouser, Black (2375D) / LAUREL Polo, White (2373A)
- 6. SASSA Stretch Top, White (2267A)
- 7. ARLINGTON Polo, White (2372A) / LEONA Skirt, Black (2370D)

SPA & WELLNESS – Pages 14 - 15

- 1. ARLINGTON Polo, Sand (2372H) / CAMILA Trouser, Black (2371D)
- 2. LUCY Breton Top, White/Navy (2430A) / LIBERTY Chino, Black (2404D)
- 3. She wears: LIBRA Jacket, Grey (2379C) / ANNA Polo, White (2378A) / ROCHELLE Jeans, Indigo (2374A) He wears: RORY Jacket, Grey (4374C) / FREDERICK Polo, White (4222A) / BOULDER Jeans, Indigo (8958A)

SPA & WELLNESS – Pages 14 - 15 Continued

- 4. She wears: LIBRA Jacket, Navy (2379A) / LEONA Skirt, Navy (2370A) / ARLINGTON Polo, Sand (2372H) He wears: HAMPTON Polo, Sand (4223H) / LEO SLIM FIT Chino, Midnight (8058G)
- 5. COLUMBIA Polo, Navy (4224B) / LEO SLIM FIT Chino, Tan (8058B)
- 6. LOCKHART Tunic, Sand (2402B)
- 7. DURHAM Chino Cargo, Black (8027D) / ROCHESTER Fleece Gilet, Black (4643D)

MAINTENANCE & FM – Pages 16 - 17

- 1. NANTES Cargo Trouser, Black (2375D) / ATLANTA Jumper, Black (2307D)
- 2. She wears: VENICE Padded Jacket, Black (2413D) He wears: ASHTON Fleece ¼ Zip, Black (4642D)
- 3. NANTES Cargo Trouser, Black (2375D) / ATHENA Shirt, White (2394A)
- 4. She wears: CINCINNATI Fleece Gilet, Navy (4221A) / NANTES Cargo Trouser, Navy (2375A) He wears: BALTIMORE Fleece Jacket, Navy (4220A) / TOURS Cargo Trouser, Navy (8968A)
- 5. He wears: DURHAM Chino Cargo, Navy (8027A) She wears: CARMEL Chino Cargo, Navy (2401A)
- 6. She wears: HEBE Jacket, Navy (2254A) He wears: ZEUS Jacket, Navy (3124A)
- 7. SPENCER Waterproof Mac, Navy (9177A) / BOULDER Jeans, Vintage (8958C)
- 8. JUNO Shirt, White (7742A)
- 9. TAMPA Quilted Gilet, Black (4370D) / DALLAS Jumper, Charcoal (7898C)
- 10. DELTA Trouser, Navy (8515A) / WHISTLER Shirt, White (4050A)
- 11. She wears: CLARE Fleece Jacket, Navy (2406A) / LIBERTY Chino, Airforce (2404C) He wears: LEE Fleece Jacket, Navy (4641A) / LEO SLIM FIT Chino, Airforce (8058C)

OUTDOOR – Pages 18 - 19

- 1. LOUISE Waterproof Mac, Navy (2423A) / ROCHELLE Jeans, Vintage (2374C)
- 2. SPENCER Waterproof Mac, Navy (9177A) / BOULDER Jeans, Vintage (8958C)
- 3. He wears: CHICAGO Raincoat, Navy (9887A) She wears: WASHINGTON Raincoat, Navy (2346A)
- 4. WASHINGTON Raincoat, Navy (2346A)
- 5. ORLANDO Quilted Jacket, Olive (4369E)
- 6. VENICE Padded Jacket, Black (2413D)
- 7. He wears: BOND Overcoat, Black (9760C) She wears: BURLINGTON Overcoat, Black (2261C)
- 8. She wears: CINCINNATI Fleece Gilet, Fig (4221B) He wears: BALTIMORE Fleece Jacket, Navy (4220A)



BROOK  
TAVERNER

---

SINCE 1912

# HOTELS & HOSPITALITY

CORPORATEWEAR / FORMAL - CASUAL - INDIVIDUAL



[www.brooktaverner.com](http://www.brooktaverner.com)