



TAILORED  
IMAGE

...More than a Uniform

CORPORATEWEAR COLLECTIONS

2019/20

**SKOPES**  
**EST. 1948**

The suit – the foundation of any working wardrobe.  
At Skopes, that's been our mantra for over 70 years.

So if you're cut from the same cloth as us, we're here to inspire you with a new stance on style, and guide you with curated looks that master the art of looking the ultimate professional. Because a good suit should instil confidence – and who doesn't suit that?

Skopes high quality corporate clothing is stock supported and available from professional corporate clothing suppliers who will be able to provide expert guidance and advice on which collections will be the most suitable for you.

**[www.skopescorporatewear.com](http://www.skopescorporatewear.com)**

# SKOPES

EST. 1948



Contourflex

## Pages 1 - 22

Our new collection for 2019. A revolution in womens corporate image clothing. Featuring contemporary styles in 3D hi-flex fabric & stay fresh technology. Fashionable mens suits compliment the collection in matching colours. Excellent value too.



24/7 Mode

## Pages 23 - 38

Premium quality & superbly tailored. High performance lightweight tailoring where looking good for longer matters thanks to 2 way stretch Lycra & 60% luxurious wool blend.

Our longest established and biggest selling collection.



Essentials

## Pages 39 - 52

The collection for busy lifestyles, Essentials offers the ultimate crease resistance & easy care. Garments dry quickly after washing and require the minimum of ironing.

The fabric is soft, drapes beautifully yet is highly durable.

Suitable for all working environments.



Rhino & Pride

## Pages 53 - 62

A capsule collection in a highly durable, heavyweight fabric. This collection is designed for those working in tougher conditions.

Fantastic value for money.



Business Boutique

## Pages 63 - 69

Perfectly colour coordinating accessories in high quality, easy care fabrics. Business Boutique enables smaller companies & organisations to create a bespoke look & feel with perfectly matching knitwear, blouses, ties and scarves.



Men's Trousers

## Pages 70 - 72

Our collection of mens trousers are all easy care machine washable and designed to suit all budgets and working environments across a huge range of sizes in 3 leg lengths.

Our premium, Wexford trouser and budget Brooklyn trouser feature active waists.



SKOPES  
EST. 1948



## CONTOURFLEX

Our new collection for 2019

A revolution in womens corporate image clothing featuring contemporary styles in 3D hi-flex fabric & stay fresh technology. Fashionable mens suits compliment the collection in matching colours.

Excellent value too.







# A REVOLUTIONARY FLEX FABRIC

## INTRODUCING CONTOURFLEX BY SKOPES – A REVOLUTION IN WOMENS CORPORATE IMAGE CLOTHING.

Tailored from a contemporary knitted fabric, CONTOURFLEX weaves together supreme comfort, practicality and performance into stylish garments that are highly-flexible, designed to keep you at the top of your game.

Odegon STAY FRESH TECHNOLOGY is used in Jackets, Dresses and Waistcoats keeping garments fresh and wearers feeling confident.

Available in 9 designs and 4 colourways with sizes from 4 to 28, the CONTOURFLEX Collection will reshape your expectations of corporate image clothing.

A contemporary collection of mens mix & match suits is available to complement the womenswear.

### Fabric Technology



Knitted Fabric



High Flex Fabric



Keeps its shape



Moulds to body



Stay Fresh

### Garment Benefits



Breathable



Machine Washable



Easy Care



Quick drying



Non Crease

# CONTOURFLEX FABRIC

## WE'D RECOMMEND YOU REQUEST A FABRIC SWATCH OR SAMPLE GARMENT FROM YOUR SUPPLIER SO YOU CAN SEE & FEEL FIRST-HAND THE HIGH DEGREE OF STRETCH.

We call it 3D stretch as the fabric can stretch in any direction & enables us to produce garments that flatter & mould to the contours of the body much better.

In CONTOURFLEX garments these higher stretch properties are enhanced further with the addition of 6% elastane in the fabric & the use of stretch linings in Jackets, Dresses, Skirts and Waistcoats.

Using a knitted construction provides garments with a wonderful, feminine softness & a significantly higher degree of stretch than traditional, rigid woven fabrics, even those with elastane.

The net result is garments that offer superior comfort & movement with no sense of restraint.

### TECHNICAL SPECIFICATION

- Fabric: 59% Polyester, 35% Viscose, 6% Elastane
- Construction: Knitted
- Weight: 275 gm
- Care: All garments are machine washable @ 40°C
- Fabric meets Oeko-Tex Standard 100
- Stay Fresh Technology: Jackets/Dresses/Waistcoats
- Stretch lining: Jackets/Dresses/Skirts/Waistcoats
- YKK branded zips used in Dresses, Skirts & Trousers

All our fabrics are independently tested in the UK by High Street Textile Testing Services a UKAS accredited organisation. CONTOURFLEX garments are suitable for all working environments & are easy care, machine washable or can be dry cleaned.



### PERFORMANCE

- Pilling: Grade 4-5
- Abrasion: 100,000 + with no threads broken.
- Colour Fastness: Grade 4
- Snagging: Grade 4

# STAY FRESH TECHNOLOGY

## THE NEW CONTOURFLEX RANGE FROM SKOPES INCORPORATES REVOLUTIONARY, ODOUR ABSORBING FABRIC – ODEGON®

Odegon is not a finish but an innovative new fabric based on a special type of Nano-porous carbon based material that traps odour molecules using a completely inert, chemical free process.

Small fabric patches that are discreetly sewn under the armhole on Jackets, Dresses & Waistcoats that will absorb odour regardless of washing or dry cleaning. Odour molecules are captured in the fabric patches & retained leaving nothing but fresh smelling air as a result of the Van der Waals force. These odour molecules are then released & washed away by the action of heat during washing or dry cleaning.

Odegon STAY FRESH TECHNOLOGY is permanent & does not wash out. It is kind to the environment, unlike anti-microbial finishes.

Using Nano-technology, a single Odegon patch has the equivalent surface area of a tennis court and limitless active functionality. It will carry on absorbing odour & giving protection for the lifetime of the garment.

Odegon - keeping garments fresh & wearers confident.

### BENEFITS OF ODEGON



Instant odour capture



Works for the lifetime of the garment

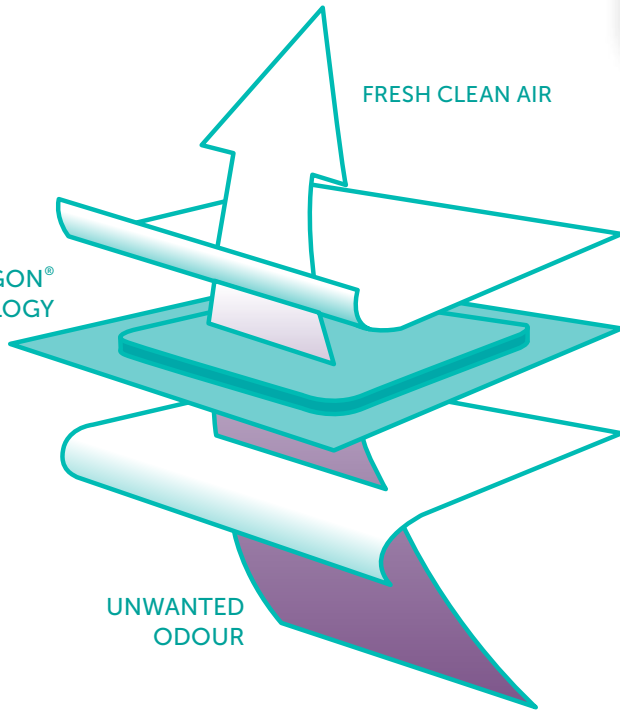


Safe for the environment & chemical free

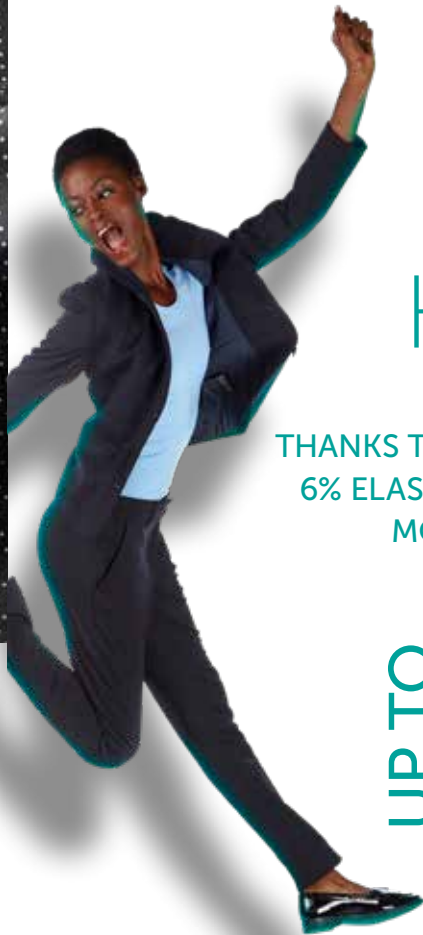


Can be washed

ODEGON®  
TECHNOLOGY



UNWANTED  
ODOUR



## HOW MUCH FLEX?

THANKS TO THE UNIQUE KNITTED CONSTRUCTION COMBINED WITH 6% ELASTANE CONTOURFLEX GARMENTS PROVIDE SIGNIFICANTLY MORE STRETCH THAN TRADITIONAL WOVEN FABRICS.

UP TO **30%** STRETCH

MEANING EXCEPTIONAL COMFORT THROUGHOUT THE WORKING DAY AND FREEDOM OF MOVEMENT ACROSS THE SHOULDERS, ARMS, BUST, WAIST & HIPS.

AS WELL AS PROVIDING SUPERIOR STRETCH COMFORT CONTOURFLEX GARMENTS ALSO RECOVER TO THEIR ORIGINAL SHAPE QUICKLY:

**96% RECOVERY AFTER 30 MINUTES**  
**100% RECOVERY AFTER 24 HOURS**

(INDEPENDENTLY TESTED TO BS EN 14704-1 : 2005 EXTENSION & RECOVERY)







CONTOURFLEX

## ENNIS JACKET

### ENNIS JACKET

COLLARLESS ZIP FRONT  
JETTED SIDE POCKETS  
PLAIN BACK  
STRETCH LINING  
STAY FRESH TECHNOLOGY

### ORDER

NAVY WWJ480  
BLACK WWJ484  
CHARCOAL WWJ486  
RED WWJ487

### SIZES

4 – 22 PETITE  
4 – 28 REGULAR  
8 – 18 TALL

CENTRE BACK LENGTH ON SIZE 12 REGULAR = 52 CM



BLACK



RED



CHARCOAL



NAVY





CONTOURFLEX

# ADAMS JACKET

- ADAMS JACKET
- 3 BUTTON
- ROUNDED LAPEL WITH INSET SEAM DETAIL
- JETTED SIDE POCKETS
- PLAIN BACK WITH PRINCESS SEAM
- STRETCH LINING
- STAY FRESH TECHNOLOGY

- ORDER
- NAVY WWJ490
- BLACK WWJ494
- CHARCOAL WWJ496

- SIZES
- 4 – 22 PETITE
- 4 – 28 REGULAR
- 8 – 18 TALL
- CENTRE BACK LENGTH ON SIZE 12 REGULAR = 59 CM



BLACK



NAVY



CHARCOAL





CONTOURFLEX

## PENDLETON DRESS

### PENDLETON DRESS

V NECK  
SHORT SLEEVE WITH V CUT OUT AT BACK  
METAL BACK ZIP FEATURE  
CENTRE BACK VENT  
STRETCH LINING  
STAY FRESH TECHNOLOGY

### ORDER

NAVY WWD490  
BLACK WWD494  
CHARCOAL WWD496  
RED WWD497

### SIZES

DRESS STYLE AVAILABLE IN 2 LENGTHS  
4 – 28 REGULAR (95 CM)  
8 – 18 TALL (105 CM)



CHARCOAL



NAVY



CONTOURFLEX

## LEWIS DRESS

### LEWIS DRESS

ROUND NECK WITH V CUT OUT  
 HALF SLEEVE WITH V CUT OUT AT SIDE  
 WAISTBAND WITH SINGLE PLEAT  
 CONCEALED BACK ZIP  
 CENTRE BACK VENT  
 STRETCH LINING  
 STAY FRESH TECHNOLOGY

### ORDER

NAVY WWD480  
 BLACK WWD484  
 CHARCOAL WWD486

### SIZES

DRESS STYLE AVAILABLE IN 2 LENGTHS  
 4 – 28 REGULAR (95 CM)  
 8 – 18 TALL (105 CM)



BLACK



CHARCOAL







## RADCLIFFE SKIRT

### RADCLIFFE SKIRT

STRAIGHT SKIRT  
DARTED FRONT & BACK  
COMFORT WAIST  
SIDE POCKETS  
CONCEALED BACK ZIP  
CENTRE BACK VENT  
STRETCH LINING

### ORDER

NAVY WWS480  
BLACK WWS484  
CHARCOAL WWS486  
RED WWS487

### SIZES

4 – 16 SHORT (54 CM/21")  
4 – 28 REGULAR (61 CM/24")  
4 – 28 LONG (69 CM/27")



## ADLINGTON SKIRT

### ADLINGTON SKIRT

PENCIL SKIRT WITH FLUTED HEM  
DARTED FRONT & BACK  
CONCEALED BACK ZIP  
STRETCH LINING

### ORDER

NAVY WWS490  
BLACK WWS494  
CHARCOAL WWS496

### SIZES

4 – 28 REGULAR (61 CM/24")  
6 – 18 LONG (69 CM/27")  
LENGTH INCLUDES 16 CM FLUTED HEM





# HOUGHTON TROUSER

**HOUGHTON TROUSER**  
STRAIGHT LEG  
DOUBLE HOOK & BAR FASTEN  
BELT LOOPS  
SLANT SIDE POCKETS

**ORDER**  
NAVY WWT480  
BLACK WWT484  
CHARCOAL WWT486

**SIZES**  
4 – 20 SHORT (74 CM/29")  
4 – 28 REGULAR (79 CM/31")  
4 – 28 LONG (91 CM/36" UNHEMMED)  
HALF HEM WIDTH ON SIZE 12 = 20 CM



BLACK CHARCOAL NAVY



# HOLMES TROUSER

**HOLMES TROUSER**  
SLIM LEG  
V CUT OUT AT HEM  
DOUBLE HOOK & BAR FASTEN  
BELT LOOPS  
SLANT SIDE POCKETS

**ORDER**  
NAVY WWT490  
BLACK WWT494  
CHARCOAL WWT496

**SIZES**  
4 – 20 SHORT (69 CM/27")  
4 – 20 REGULAR (74 CM/29")  
4 – 28 LONG (79 CM/31")  
4 – 28 X LONG (91 CM/36" UNHEMMED)  
HALF HEM WIDTH ON SIZE 12 = 16.5 CM

Standard lengths are shorter in this style.  
Can be given a more fashionable look when  
worn as an ankle grazer style as shown.



BLACK CHARCOAL NAVY



BLACK



CHARCOAL



NAVY



RED

## SANDERSON WAISTCOAT

### SANDERSON WAISTCOAT

5 BUTTON FRONT  
JETTED FRONT POCKETS  
SIDE VENTS  
FABRIC BACK  
STRETCH LINING  
STAY FRESH TECHNOLOGY

### ORDER

NAVY WWW480  
BLACK WWW484  
CHARCOAL WWW486  
RED WWW487

### SIZES

4 – 28 REGULAR

SKOPES  
EST. 1948

## CONTEMPORARY MENSWEAR

TO COMPLIMENT CONTOURFLEX  
WOMENSWEAR

### TECHNICAL SPECIFICATION

- Fabric: 80% Polyester, 20% Viscose
- Construction: Superfine Twill Weave
- Weight: 350 gm
- Care: All garments are machine washable @ 40°C
- Can be dry cleaned





# MADRID SUIT

## MADRID SUIT JACKET

TAILORED FIT  
2 BUTTONS  
CENTRE BACK VENT  
SLIM LAPELS

### ORDER

NAVY MM1953  
BLACK MM1950  
CHARCOAL MM1951

### SIZES

36 – 62 REGULAR  
36 – 52 SHORT  
38 – 62 LONG  
CENTRE BACK LENGTH ON 40 REGULAR = 76CM

## MADRID WAISTCOAT

TAILORED FIT  
5 BUTTONS  
JETTED FRONT POCKETS  
SATIN BACK  
ADJUSTABLE STRAP & BUCKLE

### ORDER

NAVY MM1253  
BLACK MM1250  
CHARCOAL MM1251

### SIZES

36 – 62 REGULAR



BLACK



CHARCOAL



NAVY



## MADRID TROUSER

TAILORED FIT  
FLAT FRONT  
BELT LOOPS  
SIDE & HIP POCKETS

### ORDER

NAVY MM7953  
BLACK MM7950  
CHARCOAL MM7951

### SIZES

30 – 54 SHORT (29)  
30 – 58 REGULAR (31)  
30 – 58 LONG (33)  
HALF HEM WIDTH ON SIZE 34R = 20.5 CM



BLACK

CHARCOAL

NAVY

## MADRID TROUSER

SLIM FIT  
FLAT FRONT  
BELT LOOPS  
SIDE & HIP POCKETS

### ORDER

NAVY MM7949  
BLACK MM7946  
CHARCOAL MM7947

### SIZES

30 – 36 SHORT (29)  
28 – 38 REGULAR (31)  
30 – 36 LONG (33)  
HALF HEM WIDTH ON SIZE 34R = 18.25 CM



SKOPES  
EST. 1948



Premium quality & superbly tailored.

High performance lightweight tailoring where looking good for longer matters thanks to 2 way stretch Lycra & 60% luxurious wool blend.

Our longest established and biggest selling collection.





# A PREMIUM QUALITY 2 WAY STRETCH FABRIC

FOR 18 YEARS, 247 COLLECTION FABRIC HAS BEEN THE  
FOUNDATION OF OUR TAILORING COLLECTIONS.

Nothing beats the feeling of wool. Luxurious, highly breathable & comfortable.  
In 247 Collection we blend 60% wool with polyester for durability and add 2  
way stretch Lycra to produce a finely spun lightweight fabric that is designed to  
maintain its good looks throughout the working day, not just the first hour.

The 2 way stretch Lycra aids comfort & movement. When the fabric eventually  
creases these will be soft & diffused not sharp & will drop out quickly.

## Fabric Technology



Wool Rich



Keeps its shape



2 Way Stretch

## Garment Benefits



Highly  
Breathable



Machine  
Washable



Comfort &  
Movement



High Crease  
Resistance



Of course a premium fabric deserves to be made into  
fabulous garments. 247 Collection pays particular attention  
with wonderful detailing throughout. Quality construction,  
linings & trims all feature. It's no wonder we have a large  
portfolio of blue chip customers who have repeatedly  
worn it.

Available in 3 colourways in mens & womens styles, 247  
Collection comes in a variety of style & fit options in a  
huge array of sizes designed to cater to everyone.

## TECHNICAL SPECIFICATION

- Fabric: 60% Wool 38% Polyester 2% Lycra (2 way stretch)
- Construction: Bengaline weave
- Weight: 260gm
- Care: All garments are machine washable at 40°C
- Can be dry cleaned

## PERFORMANCE

- Pilling: Grade 4-5
- Abrasion: 60,000 + with no threads breaking
- Colour fastness: Grade 4-5





# JULIETTE JACKET

## JULIETTE JACKET

3 BUTTON  
PLAIN BACK  
SLANT SIDE FLAP POCKETS  
2 INSIDE POCKETS  
CONTRAST LINING

## ORDER

NAVY WWJ250  
BLACK WWJ254  
CHARCOAL WWJ256

## SIZES

6 - 18 PETITE  
6 - 26 REGULAR  
8 - 18 TALL  
CENTRE BACK LENGTH ON SIZE 12 REGULAR = 67 CM



CHARCOAL



NAVY



BLACK



# ELLE JACKET

## ELLE JACKET

- 2 BUTTON
- BACK CENTRE VENT
- STRAIGHT SIDE FLAP POCKETS
- FLAP TICKET POCKET
- 2 INSIDE POCKETS
- CONTRAST LINING

## ORDER

- NAVY WWJ370
- BLACK WWJ374
- CHARCOAL WWJ376

## SIZES

- 6 - 18 PETITE
- 6 - 26 REGULAR
- 8 - 18 TALL
- CENTRE BACK LENGTH ON SIZE 12 REGULAR = 60.5 CM



BLACK



CHARCOAL



NAVY



BLACK



NAVY

# CARLA TROUSER

## CARLA TROUSER

SLIM LEG  
SLANT SIDE POCKETS  
KNEE LINED  
TWIN BUTTON WAIST FASTEN

## ORDER

NAVY WWT370  
BLACK WWT374  
CHARCOAL WWT376

## SIZES

6-20 SHORT (74CM/29")  
6-26 REGULAR (79CM/31")  
6-26 LONG (91CM/36" Unhemmed)  
HALF HEM WIDTH ON SIZE 12 = 20CM



BLACK



CHARCOAL

# MONIQUE TROUSER

## MONIQUE TROUSER

WIDE LEG  
SLANT SIDE POCKETS  
KNEE LINED  
TWIN BUTTON WAIST FASTEN

## ORDER

NAVY WWT260  
BLACK WWT264  
CHARCOAL WWT266

## SIZES

6-20 SHORT (74CM/29")  
6-26 REGULAR (79CM/31")  
6-26 LONG (91CM/36" Unhemmed)  
HALF HEM WIDTH ON SIZE 12 = 25CM







# MARIE SKIRT

## MARIE SKIRT

STRAIGHT SKIRT  
DARTED FRONT & BACK  
CONCEALED BACK ZIP  
CENTRE BACK VENT  
FULLY LINED

## ORDER

NAVY WWS250  
BLACK WWS254  
CHARCOAL WWS256

## SIZES

6-16 SHORT (53CM/21")  
6-26 REGULAR (61CM/24")  
6-26 LONG (69CM/27")

BLACK



NAVY



CHARCOAL



# DARWIN 247 SUIT

Choose from new Tailored fit or Classic fit options.

Mix n Match Jackets, trousers and waistcoats.

Tailored fit Jackets are slightly slimmer in the shoulder, waist and sleeve and shorter in the body length. Trousers are slimmer in the thigh, knee and bottom width.

Our most extensive size & fit options.





# DARWIN SUIT TAILORED FIT

## DARWIN SUIT JACKET

TAILORED FIT  
2 BUTTONS  
SIDE VENTS  
SLANT SIDE FLAP POCKETS  
SIDE VENTS  
4 INSIDE POCKETS  
CONTRAST LINING

## ORDER

NAVY MM1835  
BLACK MM1833  
CHARCOAL MM1834

## SIZES

36-46 SHORT  
36-46 REGULAR  
36-46 LONG  
CENTRE BACK LENGTH ON 40 REGULAR = 74 CM

NAVY



BLACK



CHARCOAL

## DARWIN SUIT WAISTCOAT

4 BUTTONS  
JETTED FRONT POCKETS  
SATIN BACK LINING  
ADJUSTABLE STRAP & BUCKLE

## ORDER

NAVY MM1326  
BLACK MM1327  
CHARCOAL MM1331

## SIZES

36-62 REGULAR



NAVY



BLACK



CHARCOAL

## DARWIN TROUSER

TAILORED FIT  
FLAT FRONT  
BELT LOOPS  
SIDE & HIP POCKETS  
LINED TO THE KNEE  
SHIRT GRIP WAISTBAND

## ORDER

NAVY MM7835  
BLACK MM7833  
CHARCOAL MM7834

## SIZES

28-40 SHORT (74CM/29")  
28-40 REGULAR (79CM/31")  
28-40 LONG (84CM/33")  
HALF HEM WIDTH ON SIZE 34R = 20.5 CM



NAVY



BLACK



CHARCOAL





# DARWIN SUIT CLASSIC FIT

## DARWIN SUIT JACKET

CLASSIC FIT  
2 BUTTONS  
SIDE VENTS  
SLANT SIDE FLAP POCKETS  
SIDE VENTS  
4 INSIDE POCKETS  
CONTRAST LINING

## ORDER

NAVY MM1826  
BLACK MM1827  
CHARCOAL MM1831

## SIZES

36-52 SHORT  
36-62 REGULAR  
38-62 LONG  
CENTRE BACK LENGTH ON 40 REGULAR = 77 CM

BLACK



NAVY



CHARCOAL

## DARWIN SUIT WAISTCOAT

4 BUTTONS  
JETTED FRONT POCKETS  
SATIN BACK LINING  
ADJUSTABLE STRAP & BUCKLE

## ORDER

NAVY MM1326  
BLACK MM1327  
CHARCOAL MM1331

## SIZES

36-62 REGULAR



NAVY



BLACK



CHARCOAL

## DARWIN TROUSER

CLASSIC FIT  
FLAT FRONT  
BELT LOOPS  
SIDE & HIP POCKETS  
LINED TO THE KNEE  
SHIRT GRIP WAISTBAND

## ORDER

NAVY MM7826  
BLACK MM7827  
CHARCOAL MM7831

## SIZES

30-58 SHORT (74CM/29")  
30-58 REGULAR (79CM/31")  
30-58 LONG (84CM/33")  
HALF HEM WIDTH ON SIZE 34R = 21 CM



NAVY



BLACK



CHARCOAL

SKOPES  
EST. 1948

## essentials

The collection for busy lifestyles, Essentials offers the ultimate in easy care. Garments dry quickly after washing and require the minimum of ironing.

The fabric is soft, drapes beautifully yet is highly durable.

Suitable for all working environments.







# VERSATILE ESSENTIALS

## A COLLECTION FOR BUSY LIFESTYLES

With many 1000's of very satisfied wearers, Essentials Collection offers the ultimate in easy care business clothing.

Not to be compared with other, cheap & harsh polyesters the unique fabric construction using a new generation of polyester, densely constructed – we call it double layer construction adds weight which in turn offers wonderful drape, femininity & softness to garments. In addition garments have truly exceptional crease resistance.

### Fabric Technology



Double Layer fabric



Keeps its shape

### Garment Benefits



Soft & Comfortable



Machine Washable



Easy Care



Quick drying



Non Crease

essentials

Essentials Collection offers the ultimate in easy care. Unlike wool which is extremely absorbent, garments will come out of a washing machine & dry extremely quickly requiring the minimum of ironing to bring them back to their original condition.

Thanks to the unique double layer construction, Essentials provides exceptional crease resistance & durability yet is soft & comfortable to wear.

Suitable for all working environments.

## TECHNICAL SPECIFICATION

- Fabric: 100% double layer polyester
- Construction: Plain weave
- Weight: 370 gm
- Care: All garments are machine washable at 40°C

## PERFORMANCE

- Pilling: Grade 4-5
- Abrasion: 100,000 + with no threads breaking
- Colour fastness: Grade 4-5





essentials

## DANIELLE JACKET

### DANIELLE JACKET

3 BUTTON

PLAIN BACK

SLANT SIDE FLAP POCKETS

CONTRAST LINING

### ORDER

NAVY WWJ331

BLACK WWJ334

### SIZES

6-18 PETITE

6-28 REGULAR

8-18 TALL

CENTRE BACK LENGTH ON SIZE 12 REGULAR = 67 CM



BLACK



NAVY





essentials

# CHLOE JACKET

## CHLOE JACKET

2 BUTTON

BACK CENTRE VENT

STRAIGHT SIDE FLAP POCKETS

FLAP TICKET POCKET

CONTRAST LINING

## ORDER

NAVY WWJ321

BLACK WWJ324

## SIZES

6-18 PETITE

6-28 REGULAR

8-18 TALL

CENTRE BACK LENGTH ON SIZE 12 REGULAR = 60.5 CM



BLACK



NAVY





# NATALIE TROUSER

## NATALIE TROUSER

SLIM LEG  
FITS ON THE WAIST  
SLANT SIDE POCKETS  
DOUBLE HOOK & BAR FASTEN

## ORDER

NAVY WWT351  
BLACK WWT354

## SIZES

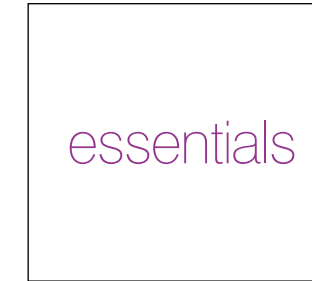
6-20 SHORT (74CM/29")  
6-28 REGULAR (79CM/31")  
6-28 LONG (91CM/36" U/F)  
HALF HEM WIDTH ON SIZE 12 = 20 CM



BLACK



NAVY



# ZOE TROUSER

## ZOE TROUSER

STRAIGHT LEG  
FITS ON THE WAIST  
SLANT SIDE POCKETS  
DOUBLE HOOK & BAR FASTEN

## ORDER

NAVY WWT271  
BLACK WWT274

## SIZES

6-20 SHORT (74CM/29")  
6-28 REGULAR (79CM/31")  
6-28 LONG (91CM/36" U/F)  
HALF HEM WIDTH ON SIZE 12 = 22.5 CM



BLACK



NAVY





essentials

# GISELLE TROUSER

## GISELLE TROUSER

BOOT CUT  
FITS BELOW WAIST  
SLANT SIDE POCKETS  
HOOK & BAR FASTEN

## ORDER

NAVY WWT341  
BLACK WWT344

## SIZES

6-20 SHORT (74CM/29")  
6-28 REGULAR (79CM/31")  
6-28 LONG (91CM/36" U/F)  
HALF HEM WIDTH ON SIZE 12 = 25.5 CM



BLACK



NAVY

# SYLVIE SKIRT

## SYLVIE SKIRT

STRAIGHT SKIRT  
DARTED FRONT & BACK  
COMFORT WAIST  
CONCEALED BACK ZIP  
CENTRE BACK VENT  
FULLY LINED

## ORDER

NAVY WWS331  
BLACK WWS334

## SIZES

6-16 SHORT (53CM/21")  
6-28 REGULAR (61CM/24")  
6-28 LONG (69CM/27")



BLACK



NAVY





essentials

## NINA WAISTCOAT

### NINA WAISTCOAT

4 BUTTON FRONT  
JETTED FRONT POCKETS  
LINED BACK

### ORDER

BLACK WWW254

### SIZES

6-28 REGULAR



## GIGI DRESS

### GIGI DRESS

ROUND NECK, SEWN DOWN PLEATS  
PLEATED WAIST, INCLUDES BELT  
FULLY LINED  
BACK ZIP AND VENT

### ORDER

NAVY WWD251  
BLACK WWD254

### SIZES

6-24 REGULAR

LIMITED AVAILABILITY  
NEW STYLE COMING SOON

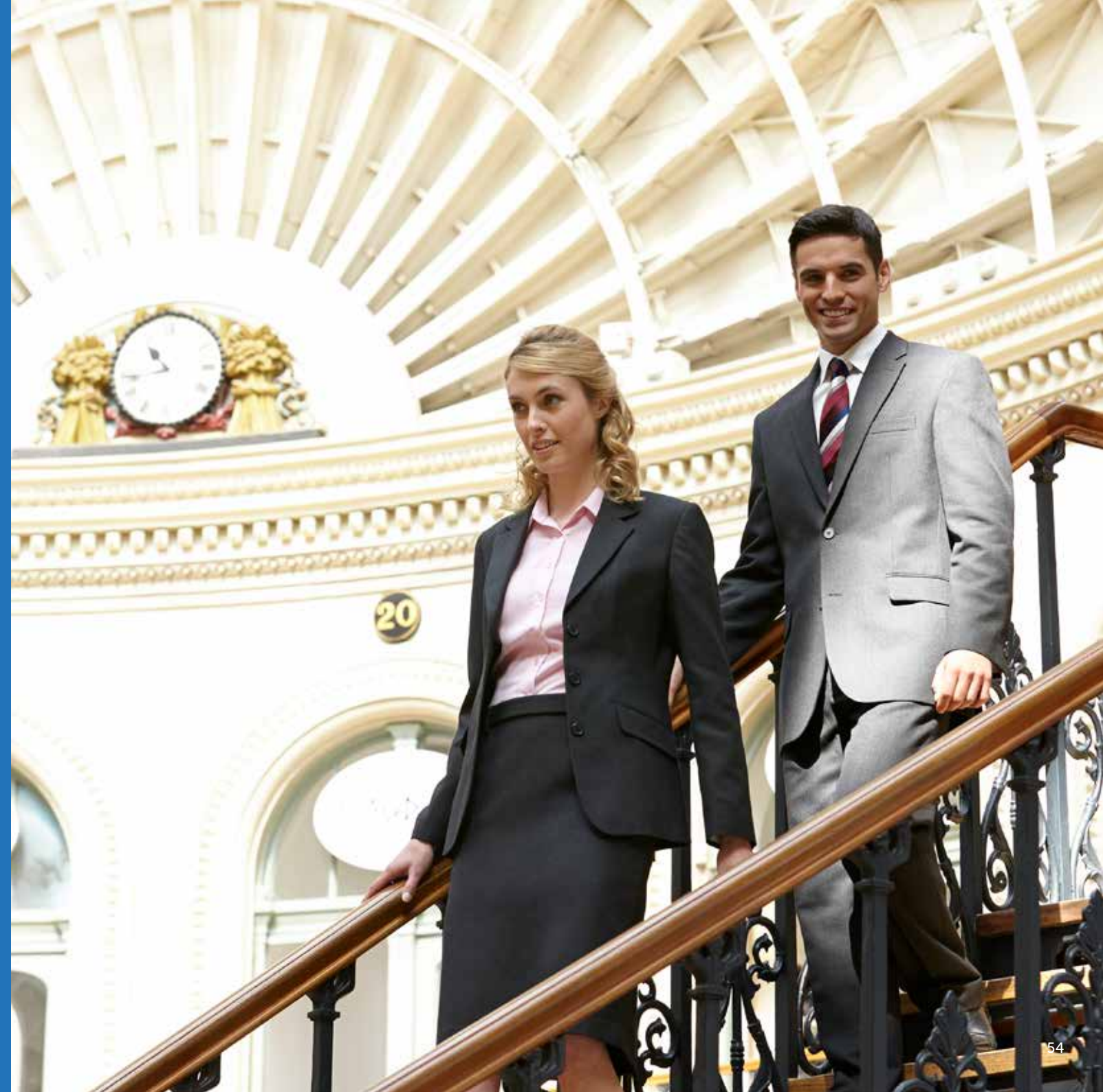
# SKOPES

EST. 1948

   
RHINO | PRIDE

A highly durable collection in heavyweight fabric.

This collection is designed for those working in tougher conditions. Fantastic value for money.





# SMART & TOUGH

## A CAPSULE COLLECTION FOR HARD WORKING ENVIRONMENTS

Rhino & Pride is a nice handling fabric in a heavyweight polyester/viscose blend and is easy care, machine washable.

### Fabric Technology



Heavyweight



Keeps its shape

### Garment Benefits



Machine Washable



Easy Care



Warm & Comfortable



Rhino & Pride Collection fits into two categories –

Those that work in tougher working conditions that while needing to look smart need more durability. For example, Bus & Coach drivers, Security Guards, Match-day Stewards, Traffic Wardens, Rail Operators, Baggage Handling & Furniture Retailers.

The collection offers exceptional value for money & therefore works particularly well for businesses & organisations with high staff turnover on tighter clothing budgets. For example, the Hotel & Hospitality sector, Facilities Management & Healthcare.

## TECHNICAL SPECIFICATION

- Fabric: 65% Polyester 35% Viscose
- Construction: Twill Weave
- Weight: 390 gm
- Care: All garments are machine washable at 40°C
- Fabric meets Oeko-Tex Standard 100

## PERFORMANCE

- Pilling: Grade 4
- Abrasion: 130,000 + with no threads breaking
- Colour fastness: Grade 4







# RHINO SUIT

## RHINO SUIT JACKET

CLASSIC FIT  
2 BUTTONS  
SIDE VENTS  
STRAIGHT SIDE FLAP POCKETS  
2 INSIDE POCKETS  
CONCEALED ZIP FOR EASY EMBROIDERY

## ORDER

BLACK MM1670  
NAVY MM1671  
CHARCOAL MM1678

## SIZES

36-46 SHORT  
36-58 REGULAR  
38-52 LONG  
CENTRE BACK LENGTH ON 40 REGULAR = 77 CM

## RHINO BLAZER

CLASSIC FIT  
2 BRASS EFFECT BUTTONS  
SIDE VENTS  
STRAIGHT SIDE FLAP POCKETS  
2 INSIDE POCKETS  
CONCEALED ZIP FOR EASY EMBROIDERY

## ORDER

BLACK MM6670  
NAVY MM6671  
(See online for images)

## SIZES

36-46 SHORT  
36-58 REGULAR  
38-52 LONG  
CENTRE BACK LENGTH ON 40 REGULAR = 77 CM



BLACK



NAVY



CHARCOAL

## RHINO TROUSERS

SINGLE PLEAT  
BELT LOOPS  
SLANT SIDE POCKETS

## ORDER

BLACK MM7670  
NAVY MM7671  
CHARCOAL MM7678

## SIZES

30-42 SHORT (74CM/29")  
28-54 REGULAR (79CM/31")  
30-42 LONG (84CM/33")  
28-54 XLONG (91CM/36" U/F)  
HALF HEM WIDTH ON SIZE 34R = 21 CM



BLACK



NAVY



CHARCOAL



# PRIDE JACKET

## PRIDE JACKET

3 BUTTON

BACK CENTRE VENT

SLANT SIDE FLAP POCKETS

CONCEALED ZIP FOR EASY EMBROIDERY

## ORDER

NAVY WWJ670

BLACK WWJ671

CHARCOAL WWJ678

## SIZES

6-18 PETITE

6-28 REGULAR

8-18 TALL

CENTRE BACK LENGTH ON SIZE 12 REGULAR = 67 CM



NAVY



BLACK



CHARCOAL



NAVY



BLACK



CHARCOAL



## PRIDE SKIRT

### PRIDE SKIRT

STRAIGHT SKIRT  
BELT LOOPS  
SLANT SIDE POCKETS  
CONCEALED BACK ZIP  
CENTRE BACK VENT  
KEY RING LOOP  
FULLY LINED

### ORDER

NAVY WWS670  
BLACK WWS671  
CHARCOAL WWS678

### SIZES

6-16 SHORT (53CM/21")  
6-28 REGULAR (61CM/24")  
6-28 LONG (69CM/27")



BLACK



CHARCOAL



NAVY



## PRIDE TROUSER

### PRIDE TROUSERS

PARALLEL LEG  
BELT LOOPS  
SLANT SIDE POCKETS  
KEY RING LOOP

### ORDER

NAVY WWT670  
BLACK WWT671  
CHARCOAL WWT678

### SIZES

6-20 SHORT (74CM/29")  
6-28 REGULAR (79CM/31")  
6-28 LONG (91CM/36" U/F)

HALF HEM WIDTH ON SIZE 12R = 22.5 CM



SKOPES  
EST. 1948



Perfectly colour coordinating accessories.

High quality, easy care fabrics.

Business Boutique enables smaller companies & organisations to create a bespoke look & feel with perfectly matching knitwear, blouses, ties and scarves.



## SPECTRUM CARDIGAN

### SPECTRUM CARDIGAN

62% VISCOSE 38% NYLON

TAILORED FIT

V NECK

LONG SLEEVE

NON PILLING

MACHINE WASHABLE

### ORDER

BLACK SWK398

NAVY SWK399

### SIZES

XS (6)

S (8/10)

M (12/14)

L (16/18)

XL (20/22)

2XL (24/26)



BLACK



NAVY



# PANORAMA SWEATER

**PANORAMA SWEATER**

62% VISCOSE 38% NYLON  
TAILORED FIT  
ROUND NECK  
SHORT SLEEVE  
FEATURE RUFFLE HEM AND CUFF  
NON PILLING  
MACHINE WASHABLE

**ORDER**

AQUA SWK410  
LILAC SWK412  
FUCHSIA SWK413  
RED SWK414  
NAVY SWK415

**SIZES**

XS (6)  
S (8/10)  
M (12/14)  
L (16/18)  
XL (20/22)  
2XL (24/26)



AQUA



LILAC



FUCHSIA



RED



NAVY





# PETALS SOFT TOUCH BLOUSE

**PETALS SOFT TOUCH BLOUSE**

- 100% POLYESTER
- TAILORED FIT
- REVER COLLAR
- SHORT SLEEVE
- ADJUSTABLE CUFF
- NON CREASE FABRIC
- EASY CARE MACHINE WASHABLE

**ORDER**

- PINK/BLEUE WWB111
- AQUA/PLUM WWB112
- LILAC/FUCHSIA WWB113
- PALE BLUE/RED WWB114

**SIZES**

6-28



AQUA/PLUM



PINK/BLUE



PALE BLUE/RED



LILAC/FUCHSIA



# SCARVES & TIES

## PETALS SCARF

100% POLYESTER CHIFFON  
20CM WIDE X 70CM LENGTH

AQUA/PLUM WAB118  
LILAC/FUCHSIA WAB119  
PALE BLUE/RED WAB120  
PINK/NAVY WAB134



## PALETTE SCARF

100% POLYESTER CHIFFON  
20CM WIDE X 70CM LENGTH

AQUA/PLUM WAB121  
LILAC/FUCHSIA WAB122  
PALE BLUE/RED WAB123  
PINK/NAVY WAB133



## CLUB SCARF

100% POLYESTER CHIFFON  
20CM WIDE X 70CM LENGTH

AQUA/PLUM WAB124  
LILAC/FUCHSIA WAB125  
PALE BLUE/RED WAB126



## MENS CLUB TIE

100% POLYESTER

AQUA/PLUM TAB106  
LILAC/FUCHSIA TAB107  
PALE BLUE /RED TAB108



SKOPES  
EST. 1948

# MENS TROUSERS

If you're just looking for trousers then a Skopes trouser offers the perfect solution. All our trousers come in a huge array of sizes and lengths and are all easy care machine washable.

So whether you're after a premium, wool blend trouser, Wexford with active stretch waist, a more fashionable look with Ryedale, the durable and exceptional value Rhino or the easy care Brooklyn with active stretch waist then you've come to the right place.



Machine Washable



Easy Care

WEXFORD TROUSER

FABRIC: 75% POLYESTER 25% WOOL  
FLAT FRONT  
BELT LOOPS  
ACTIVE WAIST  
LINED TO THE KNEE  
SLANT SIDE POCKETS

ORDER

BLACK MM7330  
NAVY MM7331  
CHARCOAL MM7338  
GREY MM7332

SIZES

30-60 SHORT (74CM/29")  
30-60 REGULAR (79CM/31")  
30-60 LONG (84CM/33")  
HALF HEM WIDTH ON SIZE 34R = 21 CM



BLACK



CHARCOAL



GREY



NAVY

RYEDALE TROUSER

FABRIC: 65% POLYESTER 35% VISCOSE  
TEFLON COATED  
FLAT FRONT  
BELT LOOPS  
SLANT SIDE POCKETS

ORDER

BLACK MM7740  
NAVY MM7742

SIZES

30-54 SHORT (74CM/29")  
30-54 REGULAR (79CM/31")  
30-54 LONG (84CM/33")  
HALF HEM WIDTH ON SIZE 34R = 21 CM



BLACK



NAVY

BROOKLYN TROUSER

FABRIC: 100% POLYESTER HOPSACK  
FLAT FRONT  
BELT LOOPS  
ACTIVE WAIST  
SLANT SIDE POCKETS

ORDER

BLACK MM7162  
NAVY MM7163  
CHARCOAL MM7165

SIZES

30-48 SHORT (74CM/29")  
30-54 REGULAR (79CM/31")  
30-54 LONG (84CM/33")  
HALF HEM WIDTH ON SIZE 34R = 21 CM



BLACK



CHARCOAL



NAVY

RHINO TROUSER

FABRIC: 65% POLYESTER 35% VISCOSE  
SINGLE PLEAT  
BELT LOOPS  
SLANT SIDE POCKETS

ORDER

BLACK MM7670  
NAVY MM7671  
CHARCOAL MM7678

SIZES

30-42 SHORT (74CM/29")  
28-54 REGULAR (79CM/31")  
30-42 LONG (84CM/33")  
28-54 XLONG (91CM/36" U/F)  
HALF HEM WIDTH ON SIZE 34R = 21 CM



BLACK



CHARCOAL



NAVY

# FIT GUIDE

WE WOULD ALWAYS RECOMMEND A SIZING EXERCISE WHERE YOU CAN TRY ON GARMENTS TO ESTABLISH THE CORRECT FIT.

## FEMALE FIT GUIDE

The below fit guide is based on Contourflex garments.  
247 Mode / Essentials / Pride collections offer a more generous fit. When measuring, the tape measure should be snug but not tight. We have ensured the styling & fit provide enough ease to give the perfect fit.

Dress, Skirt & Trouser lengths:  
Please refer to individual page details.

- Petite Fit** for women 5'3" (159.5Cm) or under
- Regular fit** for women 5'3" - 5'7"
- Tall fit** for women 5'7" or taller

Petite fit jackets are 3cm shorter in the sleeve & body length than a regular fit  
Tall fit jackets are 3cm longer in the sleeve & body length than a regular fit

ORDER SIZE	4	6	8	10	12	14	16	18	20	22	24	26	28
BUST CM	70	75	80	85	90	95	100	105	110	115	120	125	132
BUST INS	27.5	29.5	31.5	33.5	35.5	37.5	39.5	41.5	43.5	45.5	47.5	49.5	52
WAIST CM	52	57	62	67	72	77	82	87	92	97	102	107	115
WAIST INS	20.5	22.5	24.5	26.5	28.5	30.5	32.5	34.5	36.5	38.5	40.5	42.5	45
HIPS CM	88	83	88	93	98	103	108	113	118	123	128	133	140
HIPS INS	30.5	32.5	34.5	36.5	38.5	40.5	43	45	47	49	51	53	55

INSIDE LEG  
Measured from crotch to top of heel



## MALE FIT GUIDE

The below fit guide is based on Darwin Classic fit jacket & trouser.  
Tailored fit garments in the same size will fit closer to the body. When measuring, the tape measure should be snug but not tight. We have ensured the styling & fit provide enough ease to give the perfect fit.

Trouser lengths:  
Please refer to individual page details

- Short fit jackets** up to 5'7"
- Regular fit jackets** 5'7" - 6'1"
- Long fit jackets** 6'1" or taller

Short fit jackets are 3cm shorter in sleeve & body length than a regular fit  
Long fit jackets are 3cm longer in sleeve & body length than a regular fit

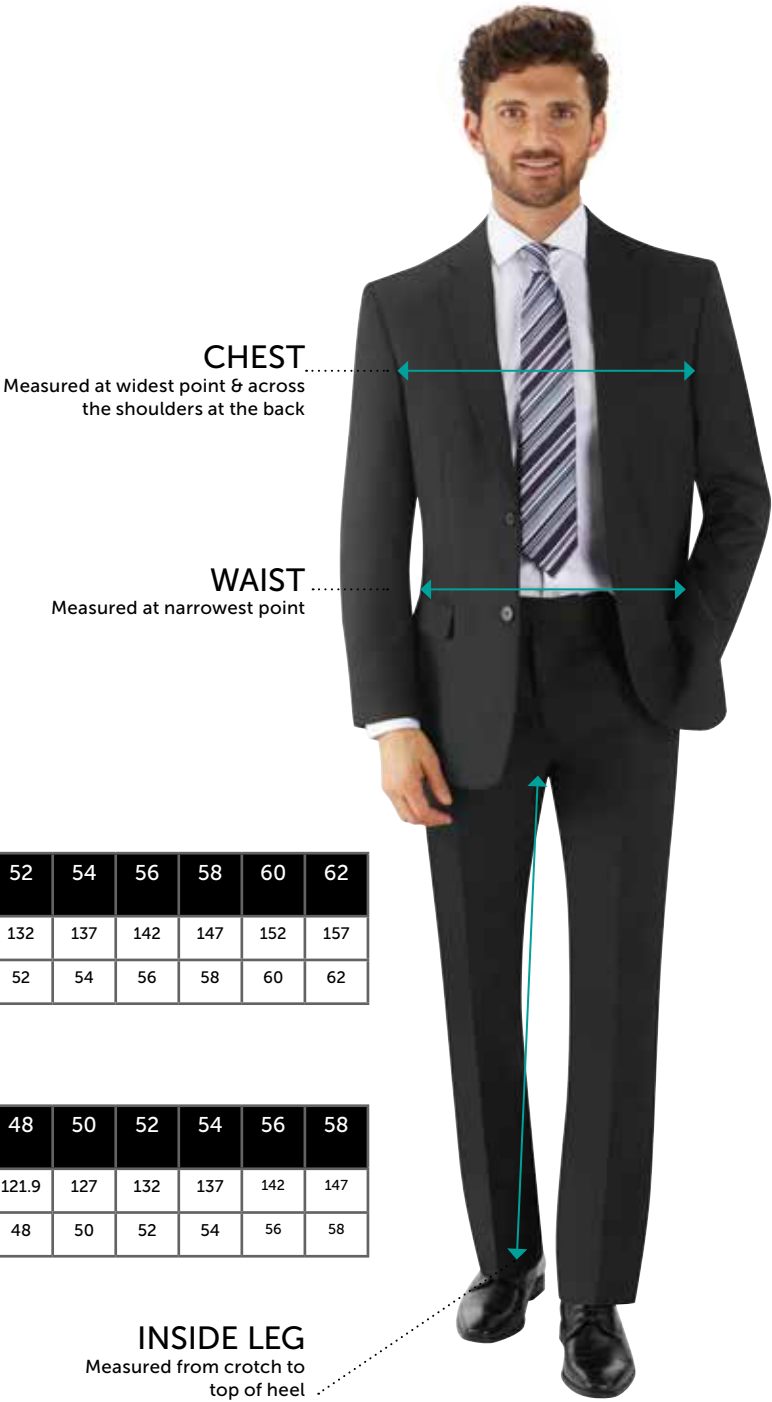
## JACKET & WAISCOAT SIZES

ORDER SIZE	34	36	38	40	42	44	46	48	50	52	54	56	58	60	62
CHEST CM	86.4	91.5	96.5	101.6	106.7	111.8	116.8	121.9	127	132	137	142	147	152	157
CHEST INS	34	36	38	40	42	44	46	48	50	52	54	56	58	60	62

## TROUSER SIZES

ORDER SIZE	30	32	34	36	38	40	42	44	46	48	50	52	54	56	58
WAIST CM	76.2	81.3	86.4	91.5	96.5	101.6	106.7	111.8	116.8	121.9	127	132	137	142	147
WAIST INS	30	32	34	36	38	40	42	44	46	48	50	52	54	56	58

INSIDE LEG  
Measured from crotch to top of heel





PRODUCT NAME	COLOUR	ORDER CODE	SIZE RANGE	PAGE
CONTOURFLEX				
ENNIS JACKET COLLARLESS ZIP FRONT JACKET	NAVY BLACK CHARCOAL RED	WWJ480 WWJ484 WWJ486 WWJ487	4 - 22 PETITE 4 - 28 REGULAR 8 - 18 TALL	7-8
ADAMS JACKET 3 BUTTON JACKET	NAVY BLACK CHARCOAL	WWJ490 WWJ494 WWJ496	4 - 22 PETITE 4 - 28 REGULAR 8 - 18 TALL	9-10
PENDLETON DRESS V NECK DRESS	NAVY BLACK CHARCOAL RED	WWD490 WWD494 WWD496 WWD497	4 - 28 REGULAR 8 - 18 TALL	11-12
LEWIS DRESS ROUND NECK DRESS	NAVY BLACK CHARCOAL	WWD480 WWD484 WWD486	4 - 28 REGULAR 8 - 18 TALL	13-14
RADCLIFFE SKIRT STRAIGHT SKIRT	NAVY BLACK CHARCOAL RED	WWS480 WWS484 WWS486 WWS487	4 - 16 SHORT (54CM / 21") 4 - 28 REGULAR (61CM / 24") 4 - 28 LONG (69CM / 27")	15
ADLINGTON SKIRT PENCIL SKIRT/FLUTED HEM	NAVY BLACK CHARCOAL	WWS490 WWS494 WWS496	4 - 28 REGULAR (61CM / 24") 6 - 18 LONG (69CM / 27")	16
HOUGHTON TROUSER STRAIGHT LEG	NAVY BLACK CHARCOAL	WWT480 WWT484 WWT486	4 - 28 SHORT (74CM / 29") 4 - 28 REGULAR (79CM / 31") 4 - 28 LONG (91CM / 36" U/F	17
HOLMES TROUSER SLIM LEG	NAVY BLACK CHARCOAL	WWT490 WWT494 WWT496	4 - 20 SHORT (69CM / 27") 4 - 28 REGULAR (74CM / 29") 4 - 28 LONG (79CM / 31") 4 - 28 X LONG (91CM / 36" U/F	18
SANDERSON WAISTCOAT	NAVY BLACK CHARCOAL RED	WWW480 WWW484 WWW486 WWW487	4 - 28 REGULAR	19
MADRID SUIT JACKET TAILORED FIT 2 BUTTON	NAVY BLACK CHARCOAL	MM1253 MM1250 MM1251	36 - 62 REGULAR 36 - 52 SHORT 38 - 62 LONG	21
MADRID WAISTCOAT	NAVY BLACK CHARCOAL	MM1253 MM1250 MM1251	36 - 62 REGULAR	21
MADRID TROUSER TAILORED FIT	NAVY BLACK CHARCOAL	MM7953 MM7950 MM7951	30 - 54 SHORT (74CM / 29") 30 - 58 REGULAR (79CM / 31") 30 - 58 LONG (84CM / 33")	22
MADRID TROUSER SLIM FIT	NAVY BLACK CHARCOAL	MM7949 MM7946 MM7947	30 - 36 SHORT (74CM / 29") 28 - 38 REGULAR (79CM / 31") 30 - 36 LONG (84CM / 33")	22

PRODUCT NAME	COLOUR	ORDER CODE	SIZE RANGE	PAGE
24/7 MODE				
JULIETTE JACKET 3 BUTTON JACKET	NAVY BLACK CHARCOAL	WWJ250 WWJ254 WWJ256	6 - 18 PETITE 6 - 26 REGULAR 8 - 18 TALL	27-28
ELLE JACKET 2 BUTTON JACKET	NAVY BLACK CHARCOAL	WWJ370 WWJ374 WWJ376	6 - 18 PETITE 6 - 26 REGULAR 8 - 18 TALL	29-30
CARLA TROUSER SLIM LEG	NAVY BLACK CHARCOAL	WWT370 WWT374 WWT376	6 - 20 SHORT (74CM / 29") 6 - 26 REGULAR (79CM / 31") 6 - 26 LONG (91CM / 36" U/F	31
MONIQUE TROUSER WIDE LEG	NAVY BLACK CHARCOAL	WWT260 WWT264 WWT266	6 - 20 SHORT (74CM / 29") 6 - 26 REGULAR (79CM / 31") 6 - 26 LONG (91CM / 36" U/F	32
MARIE SKIRT STRAIGHT SKIRT	NAVY BLACK CHARCOAL	WWS250 WWS254 WWS256	6 - 16 SHORT (54CM / 21") 6 - 26 REGULAR (61CM / 24") 6 - 26 LONG (69CM / 27")	33
DARWIN JACKET TAILORED FIT 2 BUTTON	NAVY BLACK CHARCOAL	MM1835 MM1833 MM1834	36 - 46 REGULAR 36 - 46 SHORT 36 - 46 LONG	35
DARWIN WAISTCOAT	NAVY BLACK CHARCOAL	MM1326 MM1327 MM1331	36 - 62 REGULAR	36
DARWIN TROUSER TAILORED FIT	NAVY BLACK CHARCOAL	MM7835 MM7833 MM7834	28 - 40 SHORT (74CM / 29") 28 - 40 REGULAR (79CM / 31") 28 - 40 LONG (84CM / 33")	36
DARWIN JACKET CLASSIC FIT 2 BUTTON	NAVY BLACK CHARCOAL	MM1826 MM1827 MM1831	36 - 52 SHORT 36 - 62 REGULAR 38 - 62 LONG	37
DARWIN TROUSER CLASSIC FIT	NAVY BLACK CHARCOAL	MM7826 MM7827 MM7831	30 - 58 SHORT (74CM / 29") 30 - 58 REGULAR (79CM / 31") 30 - 58 LONG (84CM / 33")	38

PRODUCT NAME	COLOUR	ORDER CODE	SIZE RANGE	PAGE
ESSENTIALS				
DANIELLE JACKET 3 BUTTON JACKET	NAVY BLACK	WWJ331 WWJ334	6 - 18 PETITE 6 - 28 REGULAR 8 - 18 TALL	43-44
CHLOE JACKET 2 BUTTON JACKET	NAVY BLACK	WWT351 WWT354	6 - 20 SHORT (74CM / 29") 6 - 28 REGULAR (79CM / 31") 6 - 28 LONG (91CM / 36" U/F	45-46
NATALIE TROUSER SLIM LEG	NAVY BLACK	WWT351 WWT354	6 - 20 SHORT (74CM / 29") 6 - 28 REGULAR (79CM / 31") 6 - 28 LONG (91CM / 36" U/F	47
ZOE TROUSER STRAIGHT LEG	NAVY BLACK	WWT271 WWT274	6 - 20 SHORT (74CM / 29") 6 - 28 REGULAR (79CM / 31") 6 - 28 LONG (91CM / 36" U/F	48
GISELLE TROUSER BOOTCUT	NAVY BLACK	WWT341 WWT344	6 - 20 SHORT (74CM / 29") 6 - 28 REGULAR (79CM / 31") 6 - 28 LONG (91CM / 36" U/F	49
SYLVIE SKIRT STRAIGHT SKIRT	NAVY BLACK	WWS331 WWS334	6 - 16 SHORT (54CM / 21") 6 - 28 REGULAR (61CM / 24") 6 - 28 LONG (69CM / 27")	50
NINA WAISTCOAT	BLACK	WWW254	6 - 28 REGULAR	51
GIGI DRESS	NAVY BLACK	WWD251 WWD254	6 - 24 REGULAR	52

PRODUCT NAME	COLOUR	ORDER CODE	SIZE RANGE	PAGE
RHINO & PRIDE				
RHINO JACKET CLASSIC FIT 2 BUTTON JACKET	BLACK NAVY CHARCOAL	MM1670 MM1671 MM1678	34 - 58 REGULAR 36 - 46 SHORT 38 - 52 LONG	57-58
RHINO BLAZER CLASSIC FIT 2 BUTTON	BLACK NAVY	MM6670 MM6671	34 - 58 REGULAR 36 - 46 SHORT 38 - 52 LONG	57
RHINO TROUSER	BLACK NAVY CHARCOAL	MM7670 MM7671 MM7678	30 - 42 SHORT (74CM / 29") 28 - 54 REGULAR (79CM / 31") 30 - 42 LONG (84CM / 33") 28 - 54 X LONG (94CM / 37" U/F)	58
PRIDE JACKET 3 BUTTON JACKET	BLACK NAVY CHARCOAL	WWJ670 WWJ671 WWJ678	6 - 18 PETITE 6 - 28 REGULAR 8 - 18 TALL	59-60
PRIDE SKIRT	BLACK NAVY CHARCOAL	WWS670 WWS671 WWS678	6 - 28 REGULAR (61CM / 24") 6 - 28 LONG (69CM / 27")	61
PRIDE TROUSER STRAIGHT LEG	BLACK NAVY CHARCOAL	WWT670 WWT671 WWT678	6 - 20 SHORT (74CM / 29") 6 - 28 REGULAR (79CM / 31") 6 - 28 LONG (91CM / 36" U/F	62

PRODUCT NAME	COLOUR	ORDER CODE	SIZE RANGE	PAGE
BUSINESS BOUTIQUE				
SPECTRUM CARDIGAN	BLACK NAVY	SWK398 SWK399	XS - 2XL	64
PANORAMA SWEATER	AQUA LILAC FUCHSIA RED NAVY	SWK410 SWK412 SWK413 SWK414 SWK415	XS - 2XL	65-66
PETALS BLOUSE	PINK/BLUE AQUA/PLUM LILAC/FUCHSIA PALE BLUE/RED	WWB111 WWB112 WWB113 WWB114	6 - 28	67-68
PETALS SCARF	AQUA/PLUM LILAC/FUCHSIA PALE BLUE/RED PINK/BLUE	WAB118 WAB119 WAB120 WAB134	1 SIZE	69
PALETTE SCARF	AQUA/PLUM LILAC/FUCHSIA PALE BLUE/RED PINK/BLUE	WAB121 WAB122 WAB123 WAB133	1 SIZE	69
CLUB SCARF	AQUA/PLUM LILAC/FUCHSIA PALE BLUE/RED	WAB124 WAB125 WAB126	1 SIZE	69
MENS CLUB TIE	AQUA/PLUM LILAC/FUCHSIA PALE BLUE/RED	TAB106 TAB107 TAB108	1 SIZE	69

PRODUCT NAME	COLOUR	ORDER CODE	SIZE RANGE	PAGE
MENS TROUSERS				
WEXFORD TROUSER	BLACK NAVY CHARCOAL GREY	MM7330 MM7331 MM7338 MM7332	30 - 60 SHORT (74CM / 29") 30 - 60 REGULAR (79CM / 31") 30 - 50 LONG (84CM / 33")	71
RYEDALE TROUSER	BLACK NAVY	MM7740 MM7742	30 - 54 SHORT (74CM / 29") 30 - 54 REGULAR (79CM / 31") 30 - 54 LONG (84CM / 33")	71
BROOKLYN TROUSER	BLACK NAVY CHARCOAL	MM7162 MM7163 MM7165	30 - 48 SHORT (74CM / 29") 30 - 54 REGULAR (79CM / 31") 30 - 54 LONG (84CM / 33")	72
RHINO TROUSER	BLACK NAVY CHARCOAL	MM7670 MM7671 MM7678	30 - 42 SHORT (74CM / 29") 28 - 54 REGULAR (79CM / 31") 30 - 42 LONG (84CM / 33") 28 - 54 X LONG (94CM / 37" U/F)	72



TAILORED  
IMAGE

**Head Office:**

8A The Linen Green,  
Moygashel, County Tyrone BT71 7HB  
Tel: +44 (0) 28 8772 6876

**Dublin Office:**

19 Valentia Road, Drumcondra, Dublin 9

**[sales@tailoredimage.com](mailto:sales@tailoredimage.com)**  
**[www.tailoredimage.com](http://www.tailoredimage.com)**