

LOOK
BOOK



DISLEY
EST. 1951



CONTENTS

| | | | |
|------------------------|-----------|------------------------------|-----------|
| Born in Belfast | 5 | Keira Blouse | 45 |
| | | Edie Blouse | 46 |
| Edition | 6 | Balloo & Curran Shirt | 47 |
| Orla Blouse | 8 | Lurgan Shirt | 48 |
| Tramore Shirt | 10 | Rosheen Blouse | 48 |
| Nuala Blouse | 12 | Rathlin Shirt | 50 |
| Kildare Shirt | 14 | Cara Blouse | 51 |
| Mona Blouse | 16 | Torr Shirt | 52 |
| Catriona Blouse | 18 | Nessa Blouse | 53 |
| Ava Blouse | 20 | Bruff Shirt | 54 |
| Ties & Scarves | 22 | Craigavon Shirt | 56 |
| | | Moir Blouse | 57 |
| Heritage | 24 | Wicklow Polo Shirts | 58 |
| Enya Blouse | 26 | Ties | 60 |
| Larne Shirt | 28 | | |
| Ballymena Shirt | 30 | Williams | 62 |
| Cranagh Shirt | 31 | Classic Shirt | 64 |
| Strabane Shirt | 32 | Classic Blouse | 66 |
| Portrush Shirt | 34 | Classic Revere Collar Blouse | 67 |
| Caitlyn Blouse | 35 | Classic Fly Front Blouse | 68 |
| Dundrum Shirt | 36 | Pilot Shirt | 70 |
| Dervla Blouse | 37 | Pilot Ladies Shirt | 71 |
| Glenarm Shirt | 38 | Pilot Radio Loop Shirt | 72 |
| Brianna Blouse | 38 | Bush Shirt | 73 |
| Iona Blouse | 40 | Security Shirt | 74 |
| Eskra Shirt | 41 | Security Ladies Shirt | 75 |
| Trillick Shirt | 42 | | |
| Ailish Blouse | 42 | Sizing Guides | 76 |
| Killay Shirt | 44 | Code Converter | 78 |



BORN IN BELFAST

1951

Disley started life when Norman & Mavis began NM Williams and opened their first factory in central Belfast.

Belfast is world renowned for quality & innovation in manufacturing from shipbuilding to the linen trade. Firmly rooted in these traditions, Disley's values challenge convention & underpin the products produced today.

Find out more about Disley at...

disley.com



EDITION

DISLEY

Sophisticated elegance peppered
with refined, thoughtful details.
Vibrant, flexible colour schemes
create choice and impact.

Contemporary fabrics, graceful
design and advanced tailoring
know-how run through every stitch.



ORLA

LONG SLEEVE & SHORT SLEEVE STRETCH BLOUSE

Fitted stretch blouse, with split front placket, dropped shoulders, princess line panels and back shaping.

74% Cotton, 23% Polyester, 3% Elastane



LONG SLEEVE

White, Light Blue, Aubergine



SHORT SLEEVE

White, Light Blue, Aubergine



SIZES
6 - 30



WHITE



LIGHT BLUE



AUBERGINE



EASY IRON



CONTEMPORARY
COLLAR



MACHINE
WASHABLE







TRAMORE

LONG SLEEVE & SHORT SLEEVE STRETCH SHIRT

Tailored fit stretch shirt, with modern semi-cutaway collar, taped seams and back darts.

74% Cotton, 23% Polyester, 3% Elastane



LONG SLEEVE

White, Light Blue, Aubergine



SHORT SLEEVE

White, Light Blue, Aubergine



SIZES

14.5 - 21"



WHITE



LIGHT BLUE



AUBERGINE



EASY IRON



CONTEMPORARY
COLLAR



MACHINE
WASHABLE



Cobalt spot tie available on page 22.

NUALA

LONG SLEEVE & SHORT SLEEVE STRIPE BLOUSE

Fitted blouse, with concealed front fastening, dropped shoulders, princess line panels and back shaping.

55% Polyester. 45% Cotton



LONG SLEEVE

Lilac/White, Cobalt/White



SHORT SLEEVE

Lilac/White, Cobalt/White



SIZES

6 - 30



LILAC/WHITE



COBALT/WHITE



EASY IRON



CONTEMPORARY
COLLAR



MACHINE
WASHABLE







KILDARE

LONG SLEEVE & SHORT SLEEVE STRIPE SHIRT

Tailored fit shirt, with modern semi-cutaway collar, taped seams and back darts.

55% Polyester. 45% Cotton



LONG SLEEVE

Lilac/White, Cobalt/White



SHORT SLEEVE

Lilac/White, Cobalt/White



SIZES

14.5 - 21"



LILAC/WHITE



COBALT/WHITE



EASY IRON



CONTEMPORARY
COLLAR



MACHINE
WASHABLE



MONA

LONG SLEEVE & SHORT SLEEVE ROUND NECK BLOUSE

Softly shaped round neck blouse with inverted front pleat, scooped hem and back panel detail.

100% Polyester



LONG SLEEVE

Ivory, Cobalt, Aubergine, Black



SHORT SLEEVE

Ivory, Cobalt, Aubergine, Black



SIZES

6 - 30



IVORY



AUBERGINE



COBALT



BLACK



EASY IRON



ROUND NECK



MACHINE
WASHABLE







CATRIONA

LONG SLEEVE & SHORT SLEEVE PRINT BLOUSE

Softly shaped round neck blouse with inverted front pleat & scooped hem.

100% Polyester



LONG SLEEVE

Navy Leaves, Charcoal Leaves,
Cobalt Petals, Aubergine Petals



SHORT SLEEVE

Navy Leaves, Charcoal Leaves,
Cobalt Petals, Aubergine Petals



SIZES
6 - 30



COBALT PETALS



AUBERGINE PETALS



NAVY LEAVES



CHARCOAL LEAVES



EASY IRON



ROUND NECK



MACHINE
WASHABLE



AVA

SHORT SLEEVE PRINT BLOUSE

Timeless collared blouse with self coloured buttons and side vents.

100% Polyester



SHORT SLEEVE

Navy Leaves, Charcoal Leaves,
Cobalt Petals, Aubergine Petals



SIZES
6 – 30



COBALT PETALS



AUBERGINE PETALS



NAVY LEAVES



CHARCOAL LEAVES



EASY IRON



CLASSIC
COLLAR



MACHINE
WASHABLE





TIES

Contemporary woven ties.

100% Polyester

SPOT



COBALT/WHITE



AUBERGINE/WHITE



NAVY/WHITE



CHARCOAL/WHITE

STRIPE



COBALT/WHITE



AUBERGINE/WHITE



NAVY/WHITE



CHARCOAL/WHITE

SCARVES

Contemporary printed chiffon scarf.

100% Polyester



COBALT PETALS



AUBERGINE PETALS



NAVY LEAVES



CHARCOAL LEAVES





HERITAGE

DISLEY

Classical colourways fused with
trusted style silhouettes.

Time-honoured design, fabric
excellence and superior craftsmanship,
shape these foundations for every
working wardrobe.



ENYA

LONG SLEEVE & SHORT SLEEVE COTTON RICH PLAIN BLOUSE

Princess line blouse, with a neat collar, side vents and softly ruched short sleeves.

55% Cotton, 45% Polyester



LONG SLEEVE

BL905 White, BL907 Light Blue,
BL906 Lilac, BL908 Mid Blue



SHORT SLEEVE

BH905 White, BH907 Light Blue,
BH906 Lilac, BH908 Mid Blue



SIZES
6 - 30



WHITE



LILAC



LIGHT BLUE



MID BLUE



EASY IRON



CONTEMPORARY
COLLAR



MACHINE
WASHABLE



LARNE

LONG SLEEVE & SHORT SLEEVE COTTON RICH PLAIN SHIRT

Classic collar shirt with chest pocket
and twin button long sleeve cuff.

55% Cotton, 45% Polyester*



LONG SLEEVE

C901 White, C902 Light Blue,
C906 Lilac, C908 Mid Blue



SHORT SLEEVE

H901 White, H902 Light Blue,
H906 Lilac, H908 Mid Blue



SIZES

14.5 - 21"



WHITE



LILAC



LIGHT BLUE



MID BLUE



EASY IRON



CLASSIC
COLLAR



MACHINE
WASHABLE



* Stock of White & Light Blue is transitioning into Cotton Rich, Poly Cotton items will continue to be supplied until this phase has been completed.



BALLYMENA

LONG SLEEVE & SHORT SLEEVE BUTTON DOWN COLLAR SHIRT

Button-down collar shirt with chest pocket and twin button long sleeve cuff.

55% Cotton, 45% Polyester*



LONG SLEEVE
C901B White



SHORT SLEEVE
H901B White



WHITE



SIZES
14.5 - 21"



EASY IRON



**BUTTON-DOWN
COLLAR**



**MACHINE
WASHABLE**

* Stock of White is transitioning into Cotton Rich, Poly Cotton items will continue to be supplied until this phase has been completed.



CRANAGH

**LONG SLEEVE & SHORT SLEEVE
CUTAWAY COLLAR SHIRT**

Cutaway collar shirt with chest pocket and twin button long sleeve cuff.

55% Cotton, 45% Polyester*



LONG SLEEVE
C901CC White



WHITE



SIZES
14.5 - 21"



EASY IRON



**CUTAWAY
COLLAR**



**MACHINE
WASHABLE**

* Stock of White is transitioning into Cotton Rich, Poly Cotton items will continue to be supplied until this phase has been completed.





STRABANE

LONG SLEEVE & SHORT SLEEVE SLIM FIT SHIRT

Slim fit shirt with classic collar, chest pocket and twin button long sleeve cuff.

55% Cotton, 45% Polyester*



LONG SLEEVE

C901SF White, C902SF Light Blue



SHORT SLEEVE

H901SF White, H902SF Light Blue



SIZES

14.5 - 18"



WHITE



LIGHT BLUE



EASY IRON



CLASSIC
COLLAR



MACHINE
WASHABLE



* Stock of White and Light Blue is transitioning into Cotton Rich, Poly Cotton items will continue to be supplied until this phase has been completed.

PORTRUSH

LONG SLEEVE DOUBLE CUFF SHIRT

Mens double cuff shirt with cutaway collar.

55% Cotton, 45% Polyester



LONG SLEEVE
C1CCDC White



WHITE



SIZES
14.5 - 21"



EASY IRON



CUTAWAY
COLLAR



MACHINE
WASHABLE

35

CAITLYN

LONG SLEEVE DOUBLE CUFF BLOUSE

Ladies double cuff shirt with classic collar.

55% Cotton, 45% Polyester



LONG SLEEVE
L1DC White



WHITE



SIZES
6 - 30



EASY IRON



CLASSIC
COLLAR



MACHINE
WASHABLE

DUNDRUM

**LONG SLEEVE & SHORT SLEEVE
NON-IRON SHIRT**

Non-iron, easy care shirt with
semi cutaway collar and twin
button long sleeve cuff.

65% Polyester, 35% Cotton



LONG SLEEVE
C114 White



SHORT SLEEVE
H114 White



WHITE



SIZES
14.5 - 21"



NON IRON



**SEMI CUTAWAY
COLLAR**



**MACHINE
WASHABLE**



DERVLA

**LONG SLEEVE & SHORT SLEEVE
NON-IRON BLOUSE**

Non-iron, open neck,
easy care blouse.

65% Polyester, 35% Cotton



LONG SLEEVE
LL114 White



SHORT SLEEVE
LH114 White, LH115 Light Blue



WHITE



LIGHT BLUE



SIZES
6 - 30



NON IRON



**CLASSIC
COLLAR**



**MACHINE
WASHABLE**



GLENARM & BRIANNA

Self-stripe shirt & blouse. Shirt with semi cutaway collar & twin button long sleeve cuff. Blouse with classic collar & bias cut side panels.

60% Cotton, 40% Polyester

GLENARM LONG SLEEVE & SHORT SLEEVE SELF-STRIPE SHIRT



LONG SLEEVE
C130 White



SHORT SLEEVE
H130 White



**SEMI CUTAWAY
COLLAR**



SIZES
14.5 - 21"

BRIANNA LONG SLEEVE & SHORT SLEEVE SELF-STRIPE BLOUSE



LONG SLEEVE
LL130 White



SHORT SLEEVE
LH130 White



**CLASSIC
COLLAR**



SIZES
6 - 30



WHITE



**MACHINE
WASHABLE**



EASY IRON





IONA

LONG SLEEVE & SHORT SLEEVE STRIPED BLOUSE

Stripe blouse with classic collar and tailored fit.

55% Polyester, 45% Cotton



LONG SLEEVE

LL410 Lilac/White,
LL411 Aqua/White



SHORT SLEEVE

LH410 Lilac/White,
LH411 Aqua/White



LILAC/WHITE



AQUA/WHITE



SIZES
6 - 30



EASY IRON



**CLASSIC
COLLAR**



**MACHINE
WASHABLE**



ESKRA

LONG SLEEVE & SHORT SLEEVE STRIPED SHIRT

Stripe shirt with classic collar, chest pocket and twin button long sleeve cuff.

55% Polyester, 45% Cotton



LONG SLEEVE

C410 Lilac/White,
C411 Aqua/White



SHORT SLEEVE

H410 Lilac/White,
H411 Aqua/White



LILAC/WHITE



AQUA/WHITE



SIZES

14.5 - 21"



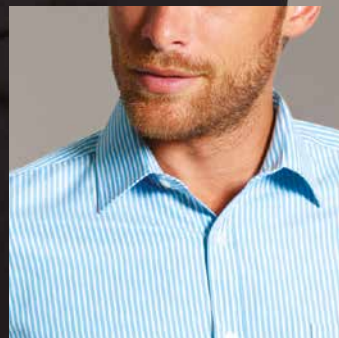
EASY IRON



CLASSIC
COLLAR



MACHINE
WASHABLE



TRILLICK & AILISH

Stripe shirt & blouse. Shirt with semi cutaway collar & twin button long sleeve cuff. Blouse with classic collar and bias cut side panels.

75% Cotton, 25% Polyester

TRILLICK LONG SLEEVE & SHORT SLEEVE STRIPED SHIRT



LONG SLEEVE

C145 Dark Blue/White Stripe,
C146 Purple/White Stripe



SHORT SLEEVE

H145 Dark Blue/White Stripe,
H146 Purple/White Stripe



DARK BLUE/WHITE



SIZES
14.5 - 21"



PURPLE/WHITE



**SEMI-CUTAWAY
COLLAR**

AILISH LONG SLEEVE & SHORT SLEEVE STRIPED BLOUSE



LONG SLEEVE

LL145 Dark Blue/White Stripe,
LL146 Purple/White Stripe



SHORT SLEEVE

LH145 Dark Blue/White Stripe,
LH146 Purple/White Stripe



DARK BLUE/WHITE



SIZES
6 - 30



PURPLE/WHITE



**CLASSIC
COLLAR**



**MACHINE
WASHABLE**



EASY IRON





KILLAY

LONG SLEEVE & SHORT SLEEVE HOUNDSTOOTH SHIRT

Houndstooth check shirt with classic collar and twin button long sleeve cuff.

55% Polyester, 45% Cotton



LONG SLEEVE

C400 Lilac, C401 Aqua, C402 Berry



SHORT SLEEVE

H400 Lilac, H401 Aqua, H402 Berry



LILAC



AQUA



BERRY



SIZES

14.5 - 21"



EASY IRON



CLASSIC
COLLAR



MACHINE
WASHABLE



KEIRA

LONG SLEEVE & SHORT SLEEVE HOUNDSTOOTH BLOUSE

Houndstooth check blouse with classic collar and tailored fit.

55% Polyester, 45% Cotton



LONG SLEEVE

LL400 Lilac, LL401 Aqua, LL402 Berry



SHORT SLEEVE

LH400 Lilac, LH401 Aqua, LH402 Berry



LILAC



AQUA



BERRY



SIZES
6 - 30



EASY IRON



CLASSIC
COLLAR



MACHINE
WASHABLE



EDIE

**LONG SLEEVE & SHORT SLEEVE
END ON END BLOUSE**

End on end blouse with
concealed front fastening
and princess panels.

65% Polyester, 35% Cotton



LONG SLEEVE

BL931 Light Blue, BL932 Purple



SHORT SLEEVE

BH931 Light Blue, BH932 Purple



LIGHT BLUE



PURPLE



SIZES
6 - 30



EASY IRON



**CLASSIC
COLLAR**



**MACHINE
WASHABLE**



BALLOO & CURRAN

LONG SLEEVE & SHORT SLEEVE END ON END SHIRTS

End on end shirts, Balloo with Button Down and Curran with Cutaway, collar. Chest pocket and twin button long sleeve cuff.

65% Polyester, 35% Cotton



LONG SLEEVE

C931B Light Blue, C932B Purple,
C01CC Light Blue



SHORT SLEEVE

H931B Light Blue, H932B Purple,
H01CC Light Blue



LIGHT BLUE



PURPLE



SIZES

14.5 - 21"



EASY IRON



MACHINE
WASHABLE



CURRAN
CUT AWAY COLLAR

LURGAN & ROSHEEN

Gingham check shirt & blouse, both with classic collar and twin button long sleeve cuff.

55% Polyester, 45% Cotton

LURGAN LONG SLEEVE & SHORT SLEEVE GINGHAM SHIRT



LONG SLEEVE
C420 Black/White



SHORT SLEEVE
H420 Black/White



BLACK/WHITE



SIZES
14.5 - 21"

ROSHEEN LONG SLEEVE & SHORT SLEEVE GINGHAM BLOUSE



LONG SLEEVE
LL420 Black/White



SHORT SLEEVE
LH420 Black/White



BLACK/WHITE



SIZES
6 - 30



CLASSIC COLLAR



MACHINE WASHABLE



EASY IRON





RATHLIN

LONG SLEEVE & SHORT SLEEVE PLAIN SHIRT

Easy care shirt with semi cutaway collar.

55% Cotton, 45% Polyester*



LONG SLEEVE

C320 Steel Grey, C125 French Navy



SHORT SLEEVE

H320 Steel Grey, H125 French Navy



STEEL GREY



FRENCH NAVY



SIZES
14.5 - 21"



EASY IRON



**SEMI CUTAWAY
COLLAR**



**MACHINE
WASHABLE**



*Stock is transitioning to Cotton Rich, Poly Cotton items will continue to be supplied until this phase has been completed.

CARA

LONG SLEEVE & SHORT SLEEVE PLAIN BLOUSE

Easy care blouse with
classic collar.

55% Cotton, 45% Polyester*



LONG SLEEVE
LL320 Steel Grey



SHORT SLEEVE
LH320 Steel Grey, LH125 French Navy



STEEL GREY



FRENCH NAVY



SIZES
6 - 30



EASY IRON



**CLASSIC
COLLAR**



**MACHINE
WASHABLE**



*Stock is transitioning to Cotton Rich, Poly Cotton items will continue to be supplied until this phase has been completed.

TORR

LONG SLEEVE & SHORT SLEEVE PLAIN SHIRT

Easy care shirt with
classic collar.

65% Polyester, 35% Cotton



LONG SLEEVE
CF922 Black



SHORT SLEEVE
HF922 Black



BLACK



SIZES
14.5 - 21"



EASY IRON



**CLASSIC
COLLAR**



**MACHINE
WASHABLE**



NESSA

LONG SLEEVE & SHORT SLEEVE PLAIN BLOUSE

Easy care blouse with
classic collar.

65% Polyester, 35% Cotton



LONG SLEEVE
LF922 Black



SHORT SLEEVE
LFH922 Black



BLACK



SIZES
6 - 30



EASY IRON



CLASSIC
COLLAR



MACHINE
WASHABLE



BRUFF

LONG SLEEVE & SHORT SLEEVE OXFORD SHIRT

Oxford shirt with button down collar, chest pocket and twin button long sleeve cuff.

70% Cotton, 30% Polyester



LONG SLEEVE

C945B White, C946B Light Blue,
C950B Royal Blue, C955B Silver



SHORT SLEEVE

H945B White, H946B Light Blue,
H950B Royal Blue, H955B Silver



SIZES

14.5 - 21"



WHITE



SILVER



LIGHT BLUE



ROYAL BLUE



EASY IRON



BUTTON-DOWN
COLLAR



MACHINE
WASHABLE





CRAIGAVON

LONG SLEEVE & SHORT SLEEVE OXFORD SHIRT

Oxford shirt with cutaway collar, and twin button long sleeve cuff.

70% Cotton, 30% Polyester



LONG SLEEVE
C945CC White,
C946CC Light Blue



SHORT SLEEVE
H945CC White,
H946CC Light Blue



WHITE



LIGHT BLUE



SIZES
14.5 - 21"



EASY IRON



CUTAWAY
COLLAR



MACHINE
WASHABLE



MOIRA

LONG SLEEVE & SHORT SLEEVE OXFORD BLOUSE

Oxford blouse with
classic collar.

70% Cotton, 30% Polyester



LONG SLEEVE

FBL945 White, FBL946 Blue



SHORT SLEEVE

FBH945 White, FBH946 Blue,
FBH950 Royal, FBH955 Silver



WHITE



SILVER



LIGHT BLUE



ROYAL BLUE



SIZES
6 - 30



EASY IRON



CLASSIC
COLLAR



MACHINE
WASHABLE



WICKLOW

POLOSHIRTS

Premium poloshirt using high twist yarn,
with taped neck and ribbed collar & cuff.

65% Polyester, 35% Cotton. 230gsm.



CP11 Navy, CP12 Royal, CP13 Green,
CP15 Red, CP17 White, CP18 Black,
CP21 Sky, CP22 Purple, CP23 Convoy Grey



SIZES
XS-5XL



NAVY



RED



SKY



ROYAL



WHITE



PURPLE



BOTTLE GREEN



BLACK



CONVOY GREY



CLASSIC
COLLAR



MACHINE
WASHABLE



EASY IRON



*Green in XS-4XL, Purple in S-4XL & Convoy Grey in S-3XL only.



TIES

Contemporary woven ties.

100% Polyester

SPOT



PURPLE DOT
TP152



BLUE DOT
TP140

STRIPE



GREY/PURPLE
TP135



BLUE/WHITE
TP136



NAVY/SILVER
TP138

CLIP-ON TIES

Contemporary woven ties.

100% Polyester



BLACK
TC105/1



NAVY
TC105/2





WILLIAMS

DISLEY

Practicality meets manufacturing
distinction.

Robust fabrics and an unswerving
commitment to quality, deliver
staunchly reliable, hard-working
styles ready to take on the most
demanding of workplaces.



CLASSIC

LONG SLEEVE & SHORT SLEEVE SHIRT

Mens shirt with classic collar, left chest pocket and twin button adjustable long sleeve cuff.

65% Polyester, 35% Cotton. 115gsm*



LONG SLEEVE

C896/1 White, C896/2 Light Blue,
WC922 Black



SHORT SLEEVE

H140/1 White, H140/2 Light Blue



SIZES

14 - 22"



WHITE



LIGHT BLUE



BLACK



EASY IRON



CLASSIC
COLLAR



MACHINE
WASHABLE



* Black colourway is 100gsm.

CLASSIC

LONG SLEEVE & SHORT SLEEVE PLAIN BLOUSE

Ladies blouse with classic collar and left chest pocket.

65% Polyester, 35% Cotton. 115gsm.



LONG SLEEVE

BL901 White, WBL922 Black



SHORT SLEEVE

BH901 White



WHITE



BLACK



SIZES
6 - 30



EASY IRON



CLASSIC
COLLAR



MACHINE
WASHABLE



CLASSIC

LONG SLEEVE & SHORT SLEEVE REVERE COLLAR BLOUSE

Ladies blouse with revere collar and left chest pocket.

65% Polyester, 35% Cotton. 115gsm.



LONG SLEEVE
BL902 White



SHORT SLEEVE
BH902 White



WHITE



SIZES
6 - 30



EASY IRON



**REVERE
COLLAR**



**MACHINE
WASHABLE**



CLASSIC

LONG SLEEVE & SHORT SLEEVE FLY FRONT BLOUSE

Ladies blouse with concealed front fastening.

65% Polyester, 35% Cotton. 115gsm.



LONG SLEEVE

BL903/1 White, BL903/2 Light Blue



SHORT SLEEVE

BH903/1 White, BH903/2 Light Blue



SIZES

6 - 30



WHITE



LIGHT BLUE



EASY IRON



CLASSIC
COLLAR



MACHINE
WASHABLE





PILOT

LONG SLEEVE & SHORT SLEEVE CLASSIC PILOT SHIRT

Mens pilot shirt with classic collar, two breast pockets with button through flaps, pen pocket and epaulettes.

65% Polyester, 35% Cotton. 115gsm.



LONG SLEEVE

P215/1 White, P215/2 Light Blue



SHORT SLEEVE

HP139/1 White, HP139/2 Light Blue



WHITE



LIGHT BLUE



SIZES

14.5 - 22"



EASY IRON



CLASSIC
COLLAR



MACHINE
WASHABLE



PILOT

LONG SLEEVE & SHORT SLEEVE CLASSIC PILOT LADIES SHIRT

Ladies pilot shirt with classic collar, two breast pockets with button through flaps, pen pocket and epaulettes.

65% Polyester, 35% Cotton. 115gsm.



LONG SLEEVE
LP136/1 White



SHORT SLEEVE
LPH136/1 White



WHITE



SIZES
6 - 30



EASY IRON



**CLASSIC
COLLAR**



**MACHINE
WASHABLE**



PILOT

LONG SLEEVE & SHORT SLEEVE RADIO LOOP SHIRT

Mens pilot shirt with radio loop, classic collar, two breast pockets with button through flaps, pen pocket and epaulettes.

65% Polyester, 35% Cotton. 115gsm.



LONG SLEEVE
P136/1 White



SHORT SLEEVE
HP136/1 White



WHITE



SIZES
14 - 22"



EASY IRON



**CLASSIC
COLLAR**



**MACHINE
WASHABLE**



BUSH

LONG SLEEVE & SHORT SLEEVE SHIRT

Mens bush shirt with classic collar, two pleated pockets with button through flaps.

65% Polyester, 35% Cotton. 155gsm.



LONG SLEEVE

B201 White, B202 Mid Blue



SHORT SLEEVE

HB201 White, HB202 Mid Blue



WHITE



MID BLUE



SIZES

14.5 - 21"



EASY IRON



CLASSIC
COLLAR



MACHINE
WASHABLE



SECURITY

LONG SLEEVE & SHORT SLEEVE SHIRT

Mens security shirt with classic collar, 2 breast pockets with button through flaps. Two radio loops and button loop shoulder to attach epaulettes. Pen divider in left pocket.

65% Polyester, 35% Cotton. 115gsm.



LONG SLEEVE
P137/1 White



SHORT SLEEVE
HP137/1 White



WHITE



SIZES
14.5 - 21"



LONG SLEEVE
LP137/1 White



SHORT SLEEVE
LHP137/1 White



WHITE



SIZES
6 - 30



**CLASSIC
COLLAR**



**MACHINE
WASHABLE**



EASY IRON



Epaulettes not included.



MENS SIZING

MEN'S SIZE GUIDE

1. CHEST

The chest measurement is taken as a circumference measurement around your chest at the widest point. Stand in a relaxed posture and breathe out.

2. WAIST

Measure around your waist (where you normally wear your trousers). Measure your body not over a trouser.



| Size | 14 | 14.5 | 15 | 15.5 | 16 | 16.5 | 17 | 17.5 | 18 | 18.5 | 19 | 19.5 | 20 | 21 | 22 |
|---------------|------|------|------|-------|-------|------|-----|------|------|------|------|------|-------|-------|-----|
| Collar inches | 14 | 14.5 | 15 | 15.5 | 16 | 16.5 | 17 | 17.5 | 18 | 18.5 | 19 | 19.5 | 20 | 21 | 22 |
| Collar cms | 35.5 | 37 | 38 | 39.5 | 40.5 | 42 | 43 | 44.5 | 45.5 | 47 | 48.5 | 49.5 | 51 | 53.5 | 59 |
| Chest inches | 34 | 36 | 38 | 40 | 42 | 44 | 46 | 48 | 50 | 52 | 54 | 56 | 58 | 62 | 66 |
| Chest cms | 86.5 | 91.5 | 96.5 | 101.5 | 106.5 | 112 | 117 | 122 | 127 | 132 | 137 | 142 | 147.5 | 157.5 | 168 |
| Waist inches | 28 | 30 | 32 | 34 | 36 | 38 | 40 | 42 | 44 | 45.5 | 47 | 48.5 | 50 | 53 | 56 |
| Waist cms | 71 | 76 | 81 | 86 | 91 | 97 | 102 | 107 | 112 | 116 | 119 | 123 | 127 | 135 | 142 |

LADIES SIZING

LADIES SIZE GUIDE

1. BUST

Measure under the arms at the fullest part around the bust horizontally.

2. WAIST

Measure around your waist (where you normally wear your trousers). Measure your body not over a trouser.



| Size | 6 | 8 | 10 | 12 | 14 | 16 | 18 | 20 | 22 | 24 | 26 | 28 | 30 |
|--------------|----|----|----|----|-----|-----|-----|-----|-----|-----|-----|-----|-----|
| Bust inches | 30 | 32 | 34 | 36 | 38 | 40 | 42 | 44 | 46 | 48 | 50 | 52 | 54 |
| Bust cms | 77 | 82 | 87 | 92 | 97 | 102 | 107 | 112 | 117 | 122 | 127 | 132 | 137 |
| Waist inches | 23 | 25 | 27 | 29 | 31 | 33 | 35 | 37 | 39 | 41 | 43 | 45 | 47 |
| Waist cms | 59 | 64 | 69 | 74 | 79 | 84 | 89 | 94 | 99 | 104 | 109 | 114 | 119 |
| Hip inches | 32 | 34 | 36 | 38 | 40 | 42 | 44 | 46 | 48 | 50 | 52 | 54 | 56 |
| Hip cms | 82 | 87 | 92 | 97 | 102 | 107 | 112 | 117 | 122 | 127 | 132 | 137 | 142 |

CODE CONVERTER

| Code | Name | Sleeve | Colour | Page |
|---------|-----------|--------|------------------------|------|
| B201 | Bush | Long | White | 73 |
| B202 | Bush | Long | Blue | 73 |
| BH901 | Classic | Short | White | 66 |
| BH902 | Classic | Short | White | 67 |
| BH903/1 | Classic | Short | White | 68 |
| BH903/2 | Classic | Short | Blue | 68 |
| BH905 | Enya | Short | White | 26 |
| BH906 | Enya | Short | Lilac | 26 |
| BH907 | Enya | Short | Light Blue | 26 |
| BH908 | Enya | Short | Mid Blue | 26 |
| BH931 | Edie | Short | Light Blue | 46 |
| BH932 | Edie | Short | Purple | 46 |
| BL901 | Classic | Long | White | 66 |
| BL902 | Classic | Long | White | 67 |
| BL903/1 | Classic | Long | White | 68 |
| BL903/2 | Classic | Long | Blue | 68 |
| BL905 | Enya | Long | White | 26 |
| BL906 | Enya | Long | Lilac | 26 |
| BL907 | Enya | Long | Light Blue | 26 |
| BL908 | Enya | Long | Mid Blue | 26 |
| BL931 | Edie | Long | Light Blue | 46 |
| BL932 | Edie | Long | Purple | 46 |
| CO1CC | Curran | Long | Light Blue | 47 |
| CI14 | Dundrum | Long | White | 36 |
| CI25 | Rathlin | Long | French Navy | 50 |
| CI30 | Glenarm | Long | White | 38 |
| CI45 | Trillick | Long | Dark Blue/White Stripe | 42 |
| CI46 | Trillick | Long | Purple/White Stripe | 42 |
| CICCDC | Portrush | Long | White | 34 |
| C320 | Rathlin | Long | Steel Grey | 50 |
| C400 | Killay | Long | Lilac | 44 |
| C401 | Killay | Long | Aqua | 44 |
| C402 | Killay | Long | Berry | 44 |
| C410 | Eskra | Long | Lilac/White | 41 |
| C411 | Eskra | Long | Aqua/White | 41 |
| C420 | Lurgan | Long | Black/White | 48 |
| C896/1 | Classic | Long | White | 64 |
| C896/2 | Classic | Long | Blue | 64 |
| C901 | Larne | Long | White | 28 |
| C901B | Ballymena | Long | White | 30 |
| C901CC | Cranagh | Long | White | 31 |
| C901SF | Strabane | Long | White | 32 |
| C902 | Larne | Long | Light Blue | 28 |
| C902SF | Strabane | Long | Light Blue | 32 |
| C906 | Larne | Long | Lilac | 28 |
| C908 | Larne | Long | Mid Blue | 28 |
| C931B | Balloo | Long | Light Blue | 47 |
| C932B | Balloo | Long | Purple | 47 |
| C945B | Bruff | Long | White | 54 |

| Code | Name | Sleeve | Colour | Page |
|--------|-----------|--------|------------------------|------|
| C946CC | Craigavon | Long | Light Blue | 56 |
| C950B | Bruff | Long | Royal | 54 |
| C955B | Bruff | Long | Silver | 54 |
| CF922 | Torr | Long | Black | 52 |
| CP11 | Wicklow | Short | Navy | 58 |
| CP12 | Wicklow | Short | Royal | 58 |
| CP13 | Wicklow | Short | Green | 58 |
| CP15 | Wicklow | Short | Red | 58 |
| CP17 | Wicklow | Short | White | 58 |
| CP18 | Wicklow | Short | Black | 58 |
| CP21 | Wicklow | Short | Sky Blue | 58 |
| CP22 | Wicklow | Short | Lilac | 58 |
| CP23 | Wicklow | Short | Convoy Grey | 58 |
| CP22 | Wicklow | Short | Lilac | 58 |
| CP23 | Wicklow | Short | Convoy Grey | 58 |
| FBH945 | Moirra | Short | White | 57 |
| FBH946 | Moirra | Short | Light Blue | 57 |
| FBH950 | Moirra | Short | Royal | 57 |
| FBH955 | Moirra | Short | Silver | 57 |
| FBL945 | Moirra | Long | White | 57 |
| FBL946 | Moirra | Long | Light Blue | 57 |
| HO1CC | Curran | Short | Light Blue | 47 |
| HI14 | Dundrum | Short | White | 36 |
| HI25 | Rathlin | Short | French Navy | 50 |
| HI30 | Glenarm | Short | White | 38 |
| HI40/1 | Classic | Short | White | 64 |
| HI40/2 | Classic | Short | Blue | 64 |
| HI45 | Trillick | Short | Dark Blue/White Stripe | 42 |
| HI46 | Trillick | Short | Purple/White Stripe | 42 |
| H320 | Rathlin | Short | Steel Grey | 50 |
| H400 | Killay | Short | Lilac | 44 |
| H401 | Killay | Short | Aqua | 44 |
| H402 | Killay | Short | Berry | 44 |
| H410 | Eskra | Short | Lilac/White | 41 |
| H411 | Eskra | Short | Aqua/White | 41 |
| H420 | Lurgan | Short | Black/White | 48 |
| H901 | Larne | Short | White | 28 |
| H901B | Ballymena | Short | White | 30 |
| H901SF | Strabane | Short | White | 32 |
| H902 | Larne | Short | Light Blue | 28 |
| H902SF | Strabane | Short | Light Blue | 32 |
| H906 | Larne | Short | Lilac | 28 |
| H908 | Larne | Short | Mid Blue | 28 |
| H931B | Balloo | Short | Light Blue | 47 |
| H932B | Balloo | Short | Purple | 47 |
| H945B | Bruff | Short | White | 54 |
| H945B | Bruff | Short | White | 54 |
| H945CC | Craigavon | Short | White | 56 |
| H946B | Bruff | Short | Light Blue | 54 |

| Code | Name | Sleeve | Colour | Page |
|----------|-------------|--------|------------------------|------|
| H945CC | Craigavon | Short | White | 56 |
| H946B | Bruff | Short | Light Blue | 54 |
| H946CC | Craigavon | Short | Light Blue | 56 |
| H950B | Bruff | Short | Royal | 54 |
| H955B | Bruff | Short | Silver | 54 |
| HB201 | Bush | Short | White | 73 |
| HB202 | Bush | Short | Blue | 73 |
| HF922 | Torr | Short | Black | 52 |
| HP136/1 | Pilot | Short | White | 72 |
| HP137/1 | Security | Short | White | 74 |
| HP139/1 | Pilot | Short | White | 70 |
| HP139/2 | Pilot | Short | Blue | 70 |
| L1DC | Caitlyn | Long | White | 35 |
| LF922 | Nessa | Long | Black | 53 |
| LFH922 | Nessa | Short | Black | 53 |
| LH114 | Dervla | Short | White | 37 |
| LH115 | Dervla | Short | Sky Blue | 37 |
| LH125 | Cara | Short | French Navy | 51 |
| LH130 | Brianna | Short | White | 38 |
| LH145 | Ailish | Short | Dark Blue/White Stripe | 42 |
| LH146 | Ailish | Short | Purple/White Stripe | 42 |
| LH320 | Cara | Short | Steel Grey | 51 |
| LH400 | Keira | Short | Lilac | 45 |
| LH401 | Keira | Short | Aqua | 45 |
| LH402 | Keira | Short | Berry | 45 |
| LH410 | Iona | Short | Lilac/White | 40 |
| LH411 | Iona | Short | Aqua/White | 40 |
| LH420 | Rosheen | Short | Black/White | 48 |
| LL114 | Dervla | Long | White | 37 |
| LL115 | Dervla | Long | Sky Blue | 37 |
| LL130 | Brianna | Long | White | 38 |
| LL145 | Ailish | Long | Dark Blue/White Stripe | 42 |
| LL146 | Ailish | Long | Purple/White Stripe | 42 |
| LL320 | Cara | Long | Steel Grey | 51 |
| LL400 | Keira | Long | Lilac | 45 |
| LL401 | Keira | Long | Aqua | 45 |
| LL402 | Keira | Long | Berry | 45 |
| LL410 | Iona | Long | Lilac/White | 40 |
| LL411 | Iona | Long | Aqua/White | 40 |
| LL420 | Rosheen | Long | Black/White | 48 |
| LP136/1 | Pilot | Long | White | 71 |
| LP137/1 | Security | Long | White | 74 |
| LPH136/1 | Pilot | Short | White | 71 |
| LPH137/1 | Security | Short | White | 74 |
| P136/1 | Pilot | Long | White | 72 |
| P137/1 | Security | Long | White | 74 |
| P215/1 | Pilot | Long | White | 70 |
| P215/2 | Pilot | Long | Blue | 70 |
| TC105/1 | Clip on Tie | N/A | Black | 61 |

| Code | Name | Sleeve | Colour | Page |
|---------|-------------|--------|--------------------|------|
| TP105/2 | Clip on Tie | N/A | Navy | 61 |
| TP135 | Tie | N/A | Grey/Purple Stripe | 60 |
| TP136 | Tie | N/A | Blue/White Stripe | 60 |
| TP138 | Tie | N/A | Navy/Silver Stripe | 60 |
| TP140 | Tie | N/A | Blue Spot | 60 |
| TP152 | Tie | N/A | Purple Dot | 60 |
| WBL922 | Classic | Long | Black | 66 |
| WC922 | Classic | Long | Black | 64 |

Disclaimer

All fabric weights (in grammes) are within +/- 5% of that stated in this brochure, and whilst we endeavour to achieve the weights printed, these are purely for illustration purposes only. Every effort has been made to ensure that the information in this brochure is correct. However, we have a policy of continually developing our products and reserve the right to make changes without notice. Please note that, due to the limitations of the print process, garment colours shown may vary slightly from actual garment colours. No part of this brochure may be copied without prior permission from the company.

A full-body photograph of a man with short brown hair and a beard, standing against a plain grey background. He is wearing a vibrant purple long-sleeved button-down shirt tucked into black trousers, secured with a black belt. He is also wearing black dress shoes. The text "DISLEY.COM" is overlaid in large, white, bold, sans-serif capital letters across the middle of his torso.

DISLEY.COM