



TAILORED  
IMAGE

...More than a Uniform

CLUBCLASS

Europe's finest collection  
of business wear for work

Six versatile tailored collections perfect for just about any job. Each collection, in it's own way, offers specific functions that suits various wearers and help express their character and your business to project a professional modern image.

## Contents

<b>8</b>	<b>ENVEE COLLECTION</b>  “The Freedom Of Movement.” The most advanced ultra stretch tailoring available for work. Engineered using an ultra tech stretch Poly/Visc/Lycra that stretches in all directions for maximum comfort at work. Stylish, comfortable and performs. Enjoy wearing Envee to work everyday. Worth paying a little more for the best tailoring for work today.	<b>76</b>	<b>ENDURANCE P.V COLLECTION</b>  The Endurance P.V. Collection “Simply Made To Perform At Work”. Extreme performance like Endurance but at a more competitive price. The Endurance P.V. Collection is the best performing collection of business tailored clothing you can buy at this price level.
<b>32</b>	<b>EVOLUTION COLLECTION</b>  The Evolution Collection is tailored from a mid weight Poly/Wool/Lycra fabric. Used in our collections for more than 10 years this is a truly tried and tested collection of Corporate Clothing.  Some of Europe’s largest companies wear the Evolution Collection. From the front of house desk at London’s best hotels to a number of high profile transport companies. All enjoy the comfort and high level of Performance that Evolution provides.	<b>88</b>	<b>ENDURANCE COLLECTION</b>  The Endurance Collection is made from fine wool mixed with branded low pil polyester to give the ultimate garment performance. At Clubclass when we use the word Performance we mean it. Too many Corporate Clothing providers believe merely adding the word performance to their label makes for a viable performance tailored clothing solution.
<b>56</b>	<b>EVERYONE COLLECTION</b>  The Everyone Collection is probably Europe’s most popular collection of Corporate Clothing. Practical, stylish and outstanding value.  Made from a versatile Poly/Visc/Lycra fabric the Everyone collection will suit almost any business environment from security to fine hotels and all office environments.	<b>102</b>	<b>EVENTS COLLECTION</b>  A collection of black trousers, waistcoats and skirts ideal for the demanding environments of hospitality, facilities management and many service sectors. Tailored from a natural stretch Polyester fabric that is designed to look good day in, day out. Wash after wash. Currently worn by 1000’s of satisfied wearers.



Clubclass has always taken into account the specific needs of people who wear tailored clothing to work everyday. In this brochure we talk about the "Architecture" of tailored clothing. That is because I strongly believe that clothing is similar to the design and construction of a building or car.

The fabric is crucial for looks and performance and we only choose the best from established mills. We then test these to destruction so the wearer doesn't have a problem.

However, much of what makes it work is unseen; it's on the inside of the garment. This is true of all our tailoring. The finest lining and interlining, dyed through buttons and high quality thread. These components are the engine room or skeleton of the clothing and by getting the skeleton right the clothing performs brilliantly.

Once produced to exacting standards our clothing is stored on hangers in a temperature controlled warehouse. We do this because tailored garments will suffer if they get too cold.

Once we are sure the clothing is perfect we support this with high levels of service. Next day delivery and hassle free returns.

I sincerely hope you like the clothing in this brochure and we promise you a rewarding experience if you choose them for your team at work.

Clubclass Corporate Clothing:  
Trust. Innovation. Expertise

*Douglas Bailey*

Managing Director



...More than a Uniform

Proud Suppliers of Clubclass Corporate Clothing



CLUBCLASS





# The architecture of fine tailored clothing for the workplace

## ROBUST PERFORMANCE    RELIABILITY

Clubclass select only the finest fabrics and then ensure they reach a minimum standard for abrasion and pilling. The standard is the highest in the industry and matched by few, if any. The quality and dimensions of the interlining and canvas, developed by our in house technician; probably unique to Clubclass , adds shape that lasts and performance that will survive day in day out even in the most demanding roles.

The quality of the construction in each garment enables supreme reliability. Each garment is manufactured to the same exacting standards: from the most expensive to the least. Each component that we use is tested extensively. Each piece of the garment is constructed for maximum performance and appearance. For example a small piece of tailors tape applied to the inside of the collar gives shape and strength in a very visual area.

## EASY TO LIVE WITH    STYLE & COMFORT

All pieces of tailored clothing in the Clubclass collections are engineered to withstand creasing and shine. Non will wear through or pill. All pieces are washable in a domestic machine. If wash instructions are followed correctly a minimum iron will restore the clothing to great shape. Clubclass clothing performs day in, day out.

6 collections each with a specific job to do. All collections offer classic and fashionable styles and slim, tailored and classic fits to clothe diverse teams. Three collections have Lycra in for comfort and crease recovery. Envee: “the freedom of movement” offers ultra stretch movement in a formal tailoring collection. The updated style and supreme comfort is perfect for anyone who wants smart tailoring at work.



*Did you Know*

95% of the polyester used in our collections is made from recycled plastic bottles

Image Above  
Strauss Slim Fit Jacket  
Puccini Slim Fit Trousers  
Black



## What is in this brochure and where can you find it?

This brochure showcases 6 collections of tailored clothing for the workplace; all of these are available from stock, no minimums and next day delivery.

Each collection can be found by simply turning to the pages that feature the collection you are interested in. To make this even easier we have tabbed each collection.

On the first page of each collection you will find key facts and brief technical details to help you decide if this is a collection that would work for your team.

The pages that follow the introduction show some of the garments in a lifestyle situation.

The final pages of each collection have a simple overview of all the garments available in that collection with size, colour and fit details (this is the easiest part of the brochure to use for garment selection).

All these collections are washable and are simply made to perform at work.



*Image Above*  
Strauss Slim Fit Jacket  
Puccini Slim Fit Trousers  
Black





*Image Above –  
Ladies*  
Larsen Tailored Fit Jacket  
King Slim Fit Trousers  
Navy Dot

*Mens*  
Strauss Slim Fit Jacket  
Puccini Slim Fit Trousers  
Navy Dot

ENVEE  
collection

“The Freedom Of Movement.” The most advanced ultra stretch tailoring available for work. Engineered using an ultra tech stretch Poly/Visc/Lycra that stretches and moves with the wearer for maximum comfort at work. Stylish, comfortable and performs. Enjoy wearing Envee to work everyday. Worth paying a little more for the best tailoring for work today

Mid Weight  
420 grams  
per linear metre

Available in 4 colours  
Black  
Grey Dot  
Navy  
Navy Dot

Weight 420 grams per linear metre  
Durability 100,000 + Rubs on the Martindale test  
Pilling Grade 4/5  
Aftercare Machine Washable at 40°C  
Fabric meets Oeko-Tex standard 100

Navy Dot & Black		Grey Dot & Navy	
66%	Polyester	68%	Polyester
30%	Viscose	28%	Viscose
4%	Lycra	4%	Lycra



*Image Below—*  
Ravel Mens Tailored Fit Jacket  
Wagner Mens Tailored Fit Trouser  
Black

*Image Right —*  
Strauss Mens Slim Fit Jacket  
Puccini Mens Slim Fit Trousers  
Navy Dot



#### THE LUXURY OF MOVEMENT

A technical stretch fabric creating a stylish collection of tailoring for work that stretches and moves with the wearer for maximum comfort at work allowing ultra comfort with a modern business look.





*Image –*  
Sibelius Mens Waistcoat  
Wagner Mens Tailored Fit Trousers  
Navy Dot



*Tailored Fit*

A contemporary shape for  
wearers who want an up to  
date trouser



*Image Above –*  
Wagner Mens Tailored Fit Trousers  
Navy Dot

*Image Left –*  
Grey Dot Fabric Detail





*Image Left –*  
 Mendelssohn Ladies Tailored Fit Jacket  
 Grey Dot

*Images Below –*  
 Smyth Ladies Tailored Fit Jacket  
 Navy Dot Fabric & Button Detail



THE LUXURY  
 OF MOVEMENT

A technical stretch fabric creating a stylish collection of tailoring for work that stretches and moves with the wearer for maximum comfort at work allowing ultra comfort with a modern business look.

[View the ladies collection on page 26 — 31](#)



*Image Below –*  
Smyth Ladies Tailored Fit Jacket  
Navy

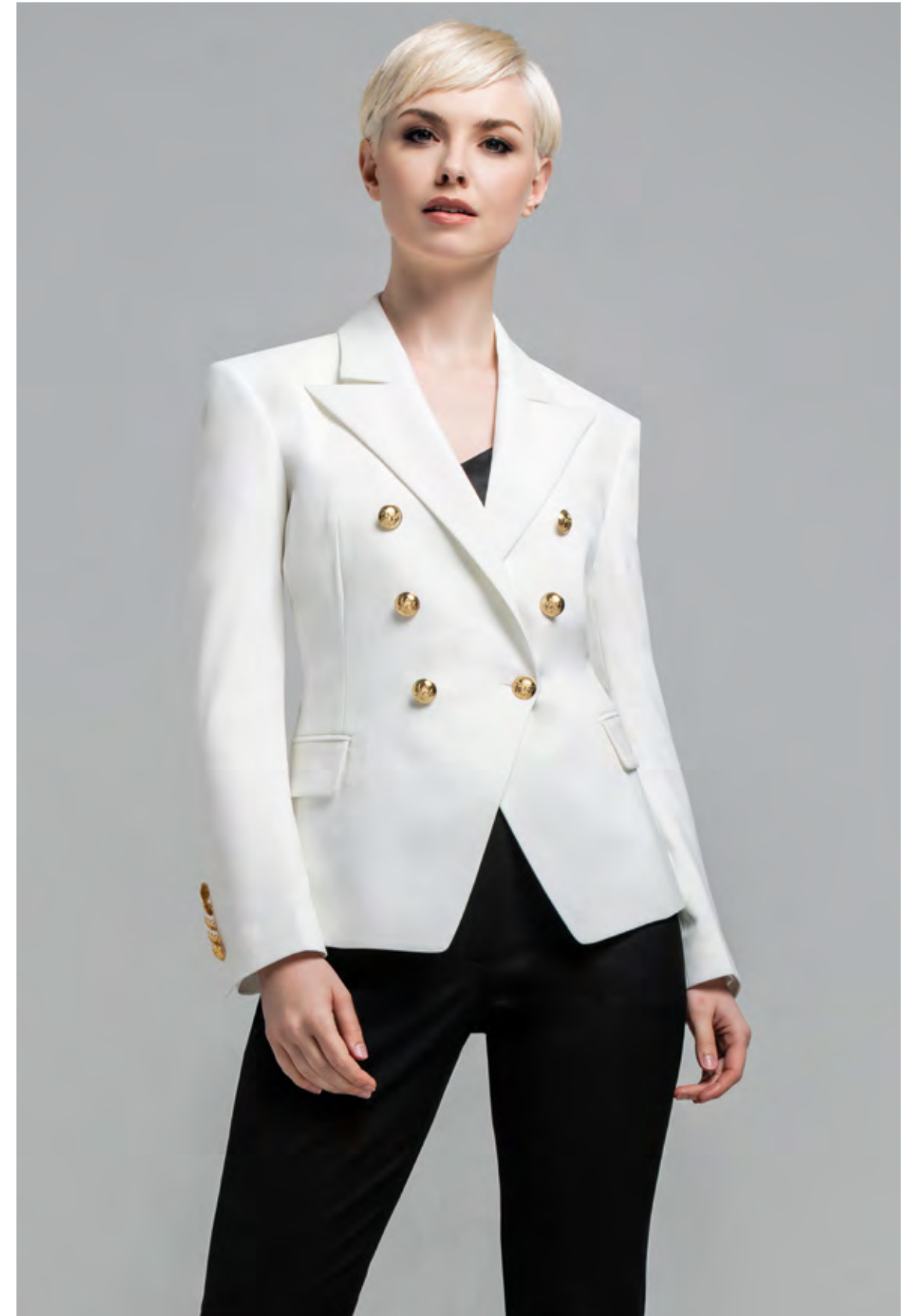


*Image –*  
Larsen Ladies Tailored Fit Jacket  
King Slim Fit Trousers  
Black





*Image –*  
Montero Ladies Double Breasted Jacket  
King Slim Fit Trousers  
Navy Dot



*Image –*  
Montero Ladies Double Breasted Jacket  
Ivory

King Slim Fit Trousers  
Black

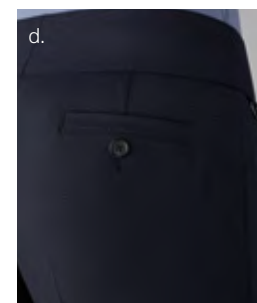


FINDING THE PERFECT TROUSERS



# SLIM TAILORED CLASSIC

Finding that right pair of trousers; the right cut, the right fabric and the right colour. Clubclass have designed 3 simple styles that work across our collections. These styles are designed to suit all shapes and sizes.



*Image Above –*  
a. Leon Classic Fit Trousers Navy  
b. Wolfe Tailored Fit Trousers Navy Dot  
c. King Slim Fit Trousers Navy Dot  
d. Wolf Tailored Fit Trousers Back & Key Loop Detail  
e. Leon Trousers Cash Card Detail





a.



b.



c.

*Images –*  
a. Leonarda Dress in Navy Dot  
b. Schumann Dress in Navy Dot  
c. Caccini Skirt in Navy Dot

*Image –*  
Strozzi Dress  
Black



ENVEE

MENS FULL RANGE



VERDI

Double Breasted Jacket

FEATURES		SIZES	
Centre back vent		Regular	
Built in pocket square		(UK) 34 – 46	
		(EU) 44 – 56	
Black	Grey Dot	Navy Dot	Navy
J8005B	J8005GD	J8005ND	J8005N



SIBELIUS

Waistcoat

FEATURES		SIZES	
5 button fastening		Regular	
Fabric back		(UK) 34 – 54	
		(EU) 44 – 64	
Black	Grey Dot	Navy Dot	Navy
V8002B	V8002GD	V8002ND	V8002N



STRAUSS

Single Breasted Slim Fit Jacket

FEATURES		SIZES	
2 Button fastening		Short   Reg   Long	
Centre back vent		(UK) 32 – 46	
Built in pocket square		(EU) 42 – 56	
Black	Grey Dot	Navy Dot	Navy
J8004B	J8004GD	J8004ND	J8004N



RAVEL

Single Breasted Tailored Fit Jacket

FEATURES		UK SIZES	EU SIZES
2 Button fastening		34 – 50 Short	44 – 60 Short
Side vents		34 – 54 Reg	44 – 64 Reg
Built in pocket square		36 – 50 Long	46 – 60 Long
Black	Grey Dot	Navy Dot	Navy
J8006B	J8006GD	J8006ND	J8006N



PUCCINI

Plain Front Slim Fit Trousers

FEATURES		UK SIZES	EU SIZES
French bearer		28 – 40 Short	44 – 56 Short
Belt loops		28 – 42 Reg	44 – 58 Reg
2 Hip pockets		28 – 40 Long	44 – 56 Long
1/2 Lined		28 – 42 Un Finished	44 – 58 Un Finished
Black	Grey Dot	Navy Dot	Navy
T8002B	T8002GD	T8002ND	T8002N



WAGNER

Plain Front Tailored Fit Trousers

FEATURES		SIZES	
French bearer		Short   Reg	
Belt loops		Long   Unfinished	
2 Hip pockets		(UK) 28 – 50	
1/2 Lined		(EU) 44 – 66	
Black	Grey Dot	Navy Dot	Navy
T8004B	T8004GD	T8004ND	T8004N

INSIDE LEG MEASUREMENTS

Short	Regular
29"IL	31"IL
74CM	79CM
Long	Unfinished
33"IL	37"IL
84CM	94CM

GARMENT INFORMATION

Weight	420 grams per linear metre		
Durability	100,000 + Rubs on the Martindale test		
Pilling	Grade 4/5		
Aftercare	Machine Washable at 40°C		
Fabric meets Oeko-Tex standard 100			
<b>Navy Dot &amp; Black</b>		<b>Grey Dot &amp; Navy</b>	
66%	Polyester	68%	Polyester
30%	Viscose	28%	Viscose
4%	Lycra	4%	Lycra

SIZE GUIDE

Men	
Short	Men under 5'6" tall
Regular	Men between 5'7" & 6'1" tall
Long	Men over 6'1" tall



ENVEE

LADIES JACKET RANGE



MENDELSSOHN

Single Breasted Tailored Jacket

FEATURES	UK SIZES	EU SIZES
Cropped jacket	4 – 20 Petite	32 – 48 Petite
2 button fastening	4 – 24 Reg	32 – 52 Reg
4 panel back detail	6 – 24 Long	34 – 52 Long

Black	Grey Dot	Navy Dot	Navy
J8002B	J8002GD	J8002ND	J8002N



LARSEN

Single Breasted Tailored Jacket

FEATURES	UK SIZES	EU SIZES
2 Button fastening	4 – 20 Petite	32 – 48 Petite
Peak lapel	4 – 24 Reg	32 – 52 Reg
Centre back vent	6 – 24 Long	34 – 52 Long

Black	Grey Dot	Navy Dot	Navy
J8001B	J8001GD	J8001ND	J8001N



SMYTH

Single Breasted Tailored Jacket

FEATURES	UK SIZES	EU SIZES
2 button fastening	4 – 20 Petite	32 – 48 Petite
Tulip lapel	4 – 24 Reg	32 – 52 Reg
4 panel back detail	6 – 24 Long	34 – 52 Long

Black	Grey Dot	Navy Dot	Navy
J8000B	J8000GD	J8000ND	J8000N



MAHLER

Waistcoat

FEATURES	SIZES
5 button fastening	Regular
Fabric back	(UK) 4 – 24
	(EU) 32 – 52

Black	Grey Dot	Navy Dot	Navy
V8000B	V8000GD	V8000ND	V8000N



MONTERO

Ivory Ladies Double Breasted Jacket

FEATURES	SIZES
Wide peak lapel	Regular
6 “show buttons”	(UK) 6 – 16
	(EU) 34 – 44

Ivory
J8003V



MONTERO

Ladies Double Breasted Jacket

FEATURES	SIZES
Wide peak lapel	Regular
6 “show buttons”	(UK) 6 – 16
	(EU) 34 – 44

Black	Grey Dot	Navy Dot	Navy
J8003B	J8003GD	J8003ND	J8003N

GARMENT INFORMATION

Weight	420 grams per linear metre
Durability	100,000 + Rubs on the Martindale test
Pilling	Grade 4/5
Aftercare	Machine Washable at 40°C
Fabric meets Oeko-Tex standard 100	

Navy Dot & Black		Grey Dot & Navy	
66%	Polyester	68%	Polyester
30%	Viscose	28%	Viscose
4%	Lycra	4%	Lycra

SIZE GUIDE

Ladies	
Petite	Women under 5'2" tall
Regular	Women between 5'3" & 5'9" tall
Long	Women over 5'10" tall



KING

Slim Fit Trousers

FEATURES

Front fastening  
Slim leg  
Zip cash pocket  
Hip pockets  
Belt loops

SIZES

Petite | Reg | Long  
| Unfinished  
(UK) 4 – 24  
(EU) 32 – 52

Black Grey Dot Navy Dot Navy  
T8003B T8003GD T8003ND T8003N

Perfect Details

HANDY ZIP POCKET  
- KING TROUSERS -



WOLFE

Tailored Fit Trousers

FEATURES

Front fastening  
Curved hip pockets  
Key loop  
Deep waistband

SIZES

Petite | Reg | Long  
| Unfinished  
(UK) 4 – 24  
(EU) 32 – 52

Black Grey Dot Navy Dot Navy  
T8001B T8001GD T8001ND T8001N

LEON

Classic Fit Trousers

FEATURES

Front fastening  
Parallel leg  
Key loop

SIZES

Petite | Reg | Long  
| Unfinished  
(UK) 4 – 24  
(EU) 32 – 52

Black Grey Dot Navy Dot Navy  
T8000B T8000GD T8000ND T8000N

INSIDE LEG MEASUREMENTS

Short  
29"IL  
74CM

Long  
34"IL  
86CM

GARMENT INFORMATION

Weight 420 grams per linear metre  
Durability 100,000 + Rubs on the Martindale test  
Pilling Grade 4/5  
Aftercare Machine Washable at 40°C  
Fabric meets Oeko-Tex standard 100

Navy Dot & Black 66% Polyester 30% Viscose 4% Lycra  
Grey Dot & Navy 68% Polyester 28% Viscose 4% Lycra

SIZE GUIDE

Ladies  
Petite Women under 5'2" tall  
Regular Women between 5'3" & 5'9" tall  
Long Women over 5'10" tall



Hem widths are based on size 8



## A full-body photograph of a woman with voluminous, curly brown hair. She is wearing a dark navy blue, short-sleeved, knee-length dress with a simple V-neckline. Her right hand is in her pocket. She is also wearing black pointed-toe pumps with thin ankle straps. The background is a plain, light-colored studio backdrop.

## Dress

Knee length  
V neck detail  
Fully lined  
x2 Zip pockets  
Rear vent

Regular  
(UK) 4 – 24  
(EU) 32 – 52

A full-body photograph of a woman with voluminous, curly brown hair. She is wearing a dark navy blue, short-sleeved, knee-length dress with a subtle pleated detail at the waist. She is also wearing black pointed-toe pumps with thin straps. The background is a plain, light-colored studio backdrop.

## Dress

Knee length  
Shoulder darts  
Hip darts  
Fully lined  
Rear vent

Regular  
(UK) 4 – 24  
(EU) 32 – 52

A full-body photograph of a woman with voluminous, curly brown hair. She is wearing a dark navy blue, sleeveless, knee-length dress with a V-neckline. The dress has a smooth, possibly stretchy fabric. She is also wearing black high-heeled shoes with thin straps across the toes. She is standing against a plain white background.

## Dress

Fashion "cut"  
Modern angled  
panels

Regular  
(UK) 4 – 24  
(EU) 32 – 52

A full-body photograph of a woman with voluminous, curly brown hair. She is wearing a navy blue, sleeveless, knee-length dress adorned with large white polka dots. The dress features a small keyhole cutout at the neckline and a subtle waistline. She is also wearing black T-strap high-heeled shoes. She is standing with her left hand on her hip and her right leg slightly forward, against a plain white background.

## Dress

Polka dot dress  
Keyhole neck line

Regular  
(UK) 4 – 18  
(EU) 32 – 46

A full-body photograph of a woman with voluminous, curly brown hair. She is wearing a white, long-sleeved, high-necked top tucked into a dark navy blue, knee-length skirt. She is also wearing black pointed-toe pumps. She is standing against a plain white background, looking directly at the camera.

## Pencil Skirt

Pencil skirt  
Front seam Detail  
Rear centre vent

Regular (58cm | 23" length)  
Long (64cm | 25" length)  
(UK) 4 – 24  
(EU) 32 - 52

Weight 420 grams per linear metre  
Durability 100,000 + Rubs on the Martindale test  
Pilling Grade 4/5  
Aftercare Machine Washable at 40°C  
Fabric meets Oeko-Tex standard 100

**Navy Dot & Black**  
66% Polyester  
30% Viscose  
4% Lycra

**Grey Dot & Navy**  
68% Polyester  
28% Viscose  
4% Lycra

Petite	Women under 5'2" tall
Regular	Women between 5'3" & 5'9" tall
Long	Women over 5'10" tall





# EVOLUTION

collection

Tailored from a fabric that is currently being worn by 1000's of happy wearers. Used in our collections for more than 10 years this is a truly tried and tested, mid weight Poly/Wool/Lycra.

Some of Europe's largest companies wear the Evolution Collection. From the front of house desk at London's best hotels to a number of high profile transport companies. All enjoy the comfort and high level of Performance that Evolution provides.

Mid Weight	Available in 3 colours
315 grams	Black
per linear metre	Charcoal
	Navy

*Image –*  
Mens Limehouse Tailored Fit Jacket  
Charcoal

Ladies Perivale Dress  
Charcoal

64%	Polyester
34%	Wool
2%	Lycra Weft Stretch
Weight	315 grams per linear metre
Durability	50,000 + Rubs on the Martindale test
Pilling	Grade 4/5
Aftercare	Machine Washable at 40°C
Fabric meets Oeko-Tex standard 100	





*Image Right –*  
 Tooting Slim Fit Jacket  
 Leyton Slim Fit Trousers  
 Navy

*Image Left –*  
 Bond Waistcoat  
 Leyton Slim Fit Trousers  
 Navy



*Did you Know*

95% of the polyester used in our collections is made from recycled plastic bottles



*Image Right –*  
Limehouse Tailored Fit Jacket  
Soho Tailored Fit Trousers  
Charcoal

*Image Below –*  
Soho Tailored Fit Trousers  
Charcoal



*Tailored Fit*

A contemporay shape for  
wearers who want an up to  
date trouser





Image Right & Below –  
Temple Tailored Fit Jacket  
Navy

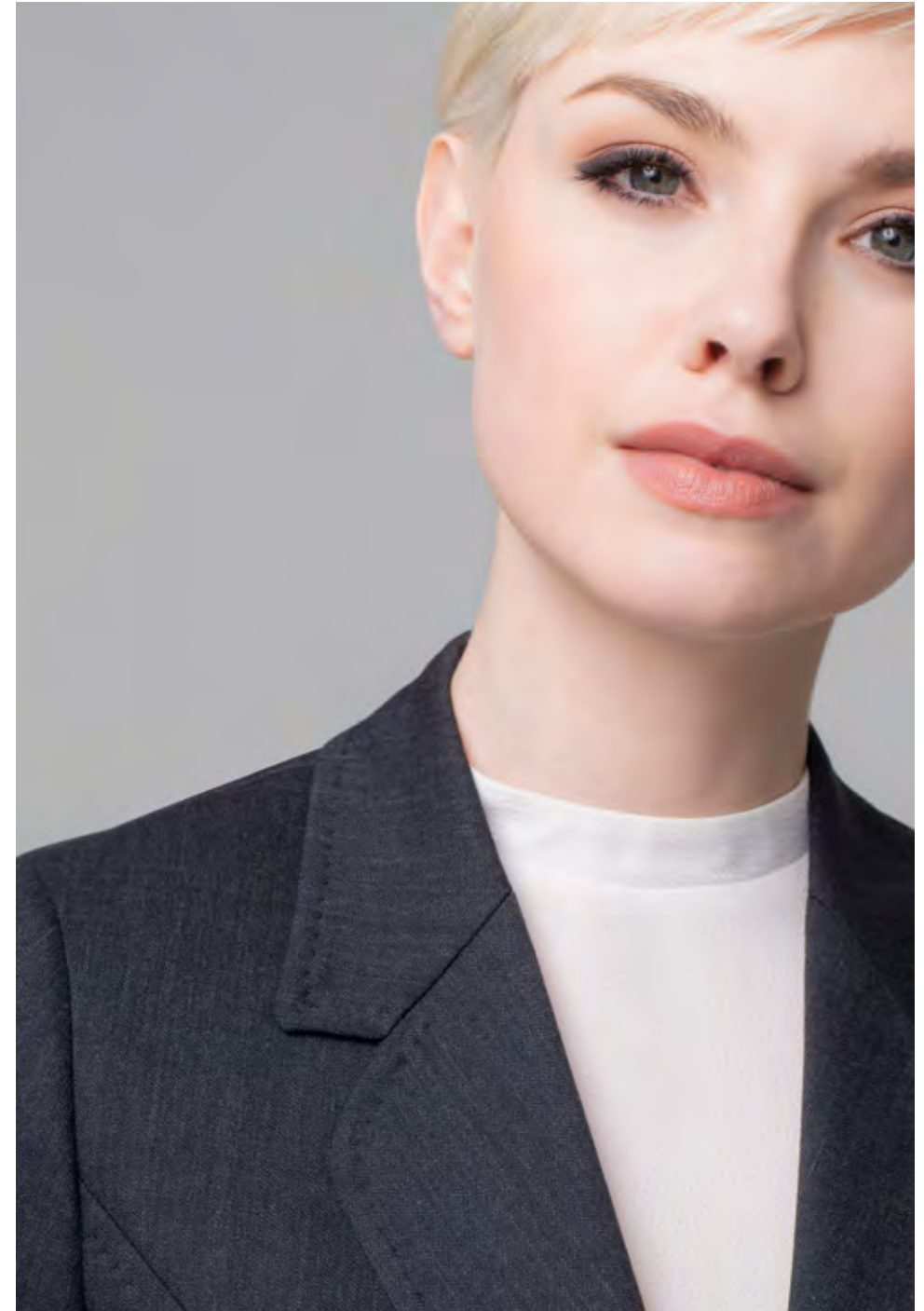


EVOLUTION



*Image Left & Below –*  
Islington Tailored Fit Jacket  
Charcoal

Pentonville Slim Fit Trousers  
Charcoal



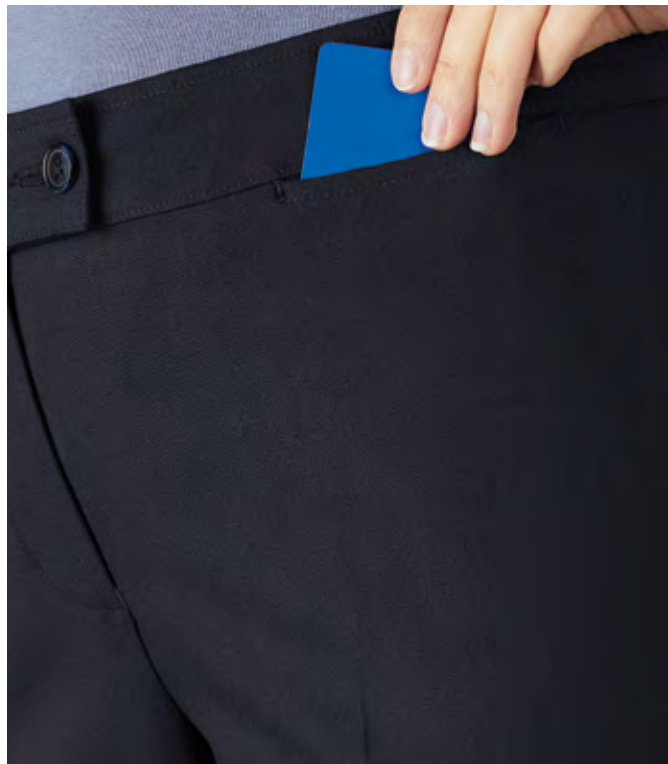
[View the full ladies collection on pages 50 — 55](#)





*Image Left –*  
Regent Trousers  
Navy

Close Up Detail Of The Cash Pocket  
on the Regent Trousers



*Image Below –*  
Temple Tailored Fit Jacket  
Black





*Image Left –*  
Perivale Dress  
Black

*Image Below –*  
Angel Skirt  
Charcoal





EVOLUTION

MENS JACKET & WAISTCOAT RANGE



TOOTING

Single Breasted Slim Fit Jacket

FEATURES	SIZES
2 button fastening Side vents	Short   Reg   Long (UK) 34 – 48 (EU) 44 – 58

Black J6005B	Charcoal J6005C	Navy J6005N
-----------------	--------------------	----------------



LIMEHOUSE

Single Breasted Tailored Fit Jacket

FEATURES	UK SIZES	EU SIZES
2 button fastening Side vents	34 – 48 Short 34 – 50 Reg 36 – 50 Long	44 – 58 Short 44 – 60 Reg 46 – 60 Long

Black J6000B	Charcoal J6000C	Navy J6000N
-----------------	--------------------	----------------



WHITEHALL

Single Breasted Classic Fit Jacket

FEATURES	UK SIZES	EU SIZES
3 button fastening Centre vent	34 – 48 Short 34 – 54 Reg 36 – 48 Long	44 – 58 Short 44 – 64 Reg 46 – 58 Long

Black J6001B	Charcoal J6001C	Navy J6001N
-----------------	--------------------	----------------



BOND

Waistcoat

FEATURES	SIZES
5 button fastening Fabric back	Regular (UK) 34 – 50 (EU) 44 – 60

Black W6004B	Charcoal W6004C	Navy W6004N
-----------------	--------------------	----------------

GARMENT INFORMATION

64%	Polyester	Weight	315 grams per linear metre
34%	Wool	Durability	50,000 + Rubs on the Martindale test
2%	Lycra Weft Stretch	Pilling	Grade 4/5
		Aftercare	Machine Washable at 40°C
			Fabric meets Oeko-Tex standard 100

SIZE GUIDE

Men	
Short	Men under 5'6" tall
Regular	Men between 5'7" & 6'1" tall
Long	Men over 6'1" tall

EVOLUTION

MENS TROUSER RANGE



LEYTON

Plain Front Slim Fit Trousers

FEATURES	UK SIZES	EU SIZES
French bearer	28 – 40 Short	44 – 56 Short
Belt loops	28 – 42 Reg	44 – 58 Reg
2 Hip pockets	28 – 40 Long	44 – 56 Long
1/2 lined	28 – 42 Un Finished	44 – 58 Un Finished

Black	Charcoal	Navy
T6006B	T6006C	T6006N

SOHO

Plain Front, Tailored Fit Trousers

FEATURES	SIZES
French bearer	Short   Reg
Belt loops	Long   Unfinished
2 Hip pockets	(UK) 28 – 50
1/2 Lined	(EU) 44 – 66

Black	Charcoal	Navy
T6002B	T6002C	T6002N

WESTMINSTER

Single Pleat, Classic Fit Trousers

FEATURES	SIZES
French bearer	Short   Reg
Belt loops	Long   Unfinished
2 Hip pockets	(UK) 28 – 50
1/2 Lined	(EU) 44 – 66

Black	Charcoal	Navy
T6003B	T6003C	T6003N

INSIDE LEG MEASUREMENTS

Short	Regular	Long	Unfinished
29"IL	31"IL	33"IL	37"IL
74CM	79CM	84CM	94CM

SIZE GUIDE

Men	
Short	Men under 5'6" tall
Regular	Men between 5'7" & 6'1" tall
Long	Men over 6'1" tall

GARMENT INFORMATION

64%	Polyester	Weight	315 grams per linear metre
34%	Wool	Durability	50,000 + Rubs on the Martindale test
2%	Lycra Weft Stretch	Pilling	Grade 4/5
		Aftercare	Machine Washable at 40°C
			Fabric meets Oeko-Tex standard 100



EVOLUTION

LADIES JACKET RANGE



ISLINGTON

Single Breasted Tailored Fit Jacket

FEATURES	UK SIZES	EU SIZES
2 button fastening	6 – 16 Petite	34 – 44 Petite
Tulip lapel	6 – 24 Reg	34 – 52 Reg
4 panel back detail	6 – 24 Long	34 – 52 Long

Black	Charcoal	Navy
J3000B	J3000C	J3000N



TEMPLE

Single Breasted Tailored Fit Jacket

FEATURES	UK SIZES	EU SIZES
2 button fastening	4 – 20 Petite	32 – 48 Petite
Peak lapel	6 – 24 Reg	34 – 52 Reg
Centre back vent	6 – 24 Long	34 – 52 Long

Black	Charcoal	Navy
J3013B	J3013C	J3013N



STRAND

Waistcoat

FEATURES	SIZES
4 button fastening	Regular
Fabric back	(UK) 6 – 24
	(EU) 34 - 52

Black	Charcoal	Navy
V3008B	V3008C	V3008N



VICTORIA

Single Breasted Classic Fit Jacket

FEATURES	UK SIZES	EU SIZES
3 button fastening	6 – 16 Petite	34 – 44 Petite
Peak lapel	6 – 24 Reg	34 – 52 Reg
Centre back vent	8 – 24 Long	36 – 52 Long

Black	Charcoal	Navy
J3002B	J3002C	J3002N



BELGRAVIA

Single Breasted Classic Fit Jacket

FEATURES	UK SIZES	EU SIZES
3 button fastening	6 – 16 Petite	34 – 44 Petite
Tulip lapel	6 – 24 Reg	34 – 52 Reg
4 Panel back detail	8 – 24 Long	36 – 52 Long

Black	Charcoal	Navy
J3001B	J3001C	J3001N



SAVOY

Single Breasted Tailored Tailcoat

FEATURES	UK SIZES
3 button fastening	Regular
	(UK) 6 – 18
	(EU) 34 – 46

Black
J3003B

GARMENT INFORMATION

64%	Polyester	Weight	315 grams per linear metre
34%	Wool	Durability	50,000 + Rubs on the Martindale test
2%	Lycra Weft Stretch	Pilling	Grade 4/5
		Aftercare	Machine Washable at 40°C
			Fabric meets Oeko-Tex standard 100

SIZE GUIDE

Ladies	
Petite	Women under 5'2" tall
Regular	Women between 5'3" & 5'9" tall
Long	Women over 5'10" tall

EVOLUTION

LADIES TROUSER RANGE



PENTONVILLE

Slim Fit Trousers

FEATURES	SIZES
Front fastening	Short   Reg   Long
Slim leg	Unfinished
x1 Zip cash pocket	(UK) 4 – 24
Hip pockets	(EU) 32 - 52
Belt loops	

Black	Charcoal	Navy
T3012B	T3012C	T3012N



KENSINGTON

Tailored Fit Trousers

FEATURES	SIZES
Front Fastening	Short   Reg   Long
2 pockets	Unfinished
Deep waistband	(UK) 6 – 24
1/2 Lined	(EU) 34 - 52

Black	Charcoal	Navy
T3008B	T3008C	T3008N



REGENT

Tailored Fit Trousers

FEATURES	SIZES
Front fastening	Short   Reg   Long
Cash pocket	Unfinished
1/2 Lined	(UK) 6 – 24
	(EU) 34 - 52

Black	Charcoal	Navy
T3007B	T3007C	T3007N



MAYFAIR

Classic Fit Trousers

FEATURES	SIZES
Front fastening	Short   Reg   Long
Flared leg	Unfinished
Cash pocket	(UK) 6 – 24
1/2 Lined	(EU) 34 - 52

Black	Charcoal	Navy
T3006B	T3006C	T3006N

GARMENT INFORMATION

64%	Polyester	Weight	315 grams per linear metre
34%	Wool	Durability	50,000 + Rubs on the Martindale test
2%	Lycra Weft Stretch	Pilling	Grade 4/5
		Aftercare	Machine Washable at 40°C
			Fabric meets Oeko-Tex standard 100

INSIDE LEG MEASUREMENTS

Short	Regular	Long	Unfinished
29"IL	31"IL	34"IL	37"IL
74CM	79CM	86CM	94CM

IN BETWEEN SIZES

Sizes 11 & 13 also available

SIZE GUIDE

Ladies	
Petite	Women under 5'2" tall
Regular	Women between 5'3" & 5'9" tall
Long	Women over 5'10" tall



Hem widths are based on size 8



EVOLUTION

LADIES DRESSES & SKIRTS



PERIVALE

Dress

FEATURES	SIZES
Knee length	Regular
V neck detail	(UK) 4 – 24
Fully lined	(EU) 32 – 52
x2 Zip pockets	
Rear vent	

Black	Charcoal	Navy
D3011B	D3011C	D3011N



SLOANE

Dress

FEATURES	SIZES
Knee length	Regular
Shoulder darts	(UK) 4 – 24
Hip darts	(EU) 32 – 52
Fully lined	
Rear vent	

Black	Charcoal	Navy
D3009B	D3009C	D3009N



ANGEL

Pencil Skirt

FEATURES	SIZES
Pencil skirt	Regular (58cm   23" length)
Front seam detail	Long (64cm   25" length)
Rear centre vent	(UK) 6 – 24
	(EU) 34 – 52

Black	Charcoal	Navy
S3004B	S3004C	S3004N



PIMLICO

Longline Skirt

FEATURES	SIZES
Longline skirt	Regular (86cm   34" length)
Front & rear vent	(UK) 6 – 24
	(EU) 34 – 52

Black	Charcoal	Navy
S3005B	S3005C	S3005N

GARMENT INFORMATION

64%	Polyester	Weight	315 grams per linear metre
34%	Wool	Durability	50,000 + Rubs on the Martindale test
2%	Lycra Weft Stretch	Pilling	Grade 4/5
		Aftercare	Machine Washable at 40°C
		Fabric meets	Oeko-Tex standard 100

SIZE GUIDE

Ladies	
Petite	Women under 5'2" tall
Regular	Women between 5'3" & 5'9" tall
Long	Women over 5'10" tall

Image Below Ladies –  
Ladies Hoxton Slim Fit Jacket  
Chiswick Slim Fit Trousers  
Navy

Image Below Mens –  
Mens Aldgate Slim Fit Jacket  
Mens Edgware Slim Fit Trousers  
Navy

EVERYONE  
collection

Europe’s most popular collection of corporate clothing. A durable, midweight collection of mix and match tailored suiting, for professionals who require modern clothing that works. The Everyone collection will suit almost any business environment from security to fine hotels and all office environments.

Mid Weight 315 grams per linear metre	Available in 4 colours Light Grey Charcoal Black Navy
---	---

64%	Polyester
34%	Viscose
2%	Lycra Weft Stretch
Weight	315 grams per linear metre
Durability	145,000 + Rubs on the Martindale test
Pilling	Grade 4/5
Aftercare	Machine Washable at 40°C

Fabric meets Oeko-Tex standard 100



*Image Below –*  
Mens Aldgate Slim Fit Jacket  
Mens Edgware Slim Fit Trousers  
Black



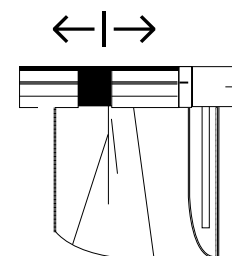
*Image Below –*  
Mens Aldgate Slim Fit Jacket  
Mens Edgware Slim Fit Trousers  
Light Grey





*Image Left –*  
 Farringdon Tailored Fit Jacket  
 Harrow Tailored Fit Trousers  
 Charcoal

*Image Below –*  
 Putney Easy Waist Tailored Fit Trousers  
 Charcoal



#### EASY WAIST CONSTRUCTION

A discreet elastic insert  
 to give waist ease  
 while retaining a formal  
 appearance. The easy waist  
 has no gap in the pockets  
 and is unique to Clubclass .

View the full mens collection on pages 68 — 69



*Image Below –*  
Hoxton Slim Fit Jacket  
Chiswick Trousers  
Navy



*Image Below –*  
Chiswick Trousers  
Charcoal



*Did you Know*

95% of the polyester used in  
our collections is made from  
recycled plastic bottles

*Image Below –*  
Bloomsbury Tailored Fit Jacket  
Chiswick Slim Fit Trousers  
Charcoal



*Image –*  
Bloomsbury Jacket  
Charcoal



EVERYONE





*Images –*  
a. Bethnal Dress in Charcoal  
b. Holborn Skirt in Charcoal

*Image –*  
Primrose Dress  
Black



EVERYONE

MENS JACKET & TROUSERS RANGE



FARRINGTON

Single Breasted Tailored Fit Jacket

FEATURES

2 button fastening  
Side vents

UK SIZES	EU SIZES
34 – 50 Short	44 – 60 Short
34 – 54 Reg	44 – 64 Reg
36 – 50 Long	46 – 60 Long



ALDGATE

Single Breasted Slim Fit Jacket

FEATURES

2 button fastening  
Side vents

UK SIZES	EU SIZES
32 – 46 Short	42 – 56 Short
32 – 46 Reg	42 – 56 Reg
32 – 46 Long	42 – 56 Long



BOROUGH

Waistcoat

FEATURES

5 button fastening  
Fabric back

SIZES
Regular
(UK) 34 – 54
(EU) 44 – 64

Light Grey J1000LG	Charcoal J1000C	Black J1000B	Navy J1000N
-----------------------	--------------------	-----------------	----------------

Light Grey J1001LG	Charcoal J1001C	Black J1001B	Navy J1001N
-----------------------	--------------------	-----------------	----------------

Light Grey W1004LG	Charcoal W1004C	Black W1004B	Navy W1004N
-----------------------	--------------------	-----------------	----------------

GARMENT INFORMATION

64%	Polyester	Weight	315 grams per linear metre
34%	Viscose	Durability	145,000 + Rubs on the Martindale test
2%	Lycra Weft Stretch	Aftercare	Machine Washable at 40°C
Fabric meets Oeko-Tex standard 100			

SIZE GUIDE

Men	
Short	Men under 5'6" tall
Regular	Men between 5'7" & 6'1" tall
Long	Men over 6'1" tall



HARROW

Plain Front, Tailored Fit Trousers

FEATURES

French bearer  
Belt loops  
2 Hip pockets  
1/2 Lined

SIZES

Short | Reg  
Long | Unfinished  
(UK) 28 – 50  
(EU) 44 – 66

Light Grey T1002LG	Charcoal T1002C	Black T1002B	Navy T1002N
-----------------------	--------------------	-----------------	----------------



EDGWARE

Plain Front Slim Fit Trousers

FEATURES

French bearer  
Belt loops  
2 Hip pockets  
1/2 Lined

UK SIZES

28 – 40 Short  
28 – 42 Reg  
28 – 40 Long  
28 – 42 Un Finished

EU SIZES

44 – 56 Short  
44 – 58 Reg  
44 – 56 Long  
44 – 58 Un Finished

Light Grey T1003LG	Charcoal T1003C	Black T1003B	Navy T1003N
-----------------------	--------------------	-----------------	----------------



PUTNEY - EASY WAIST

Plain Front, Easy Waist, Tailored Fit Trousers

FEATURES

French bearer  
Belt loops  
2 Hip pockets  
1/2 Lined

SIZES

Short | Reg | Long | Unfinished  
(UK) 28 – 50  
(EU) 44 – 56

Light Grey T2012LG	Charcoal T2012C	Black T2012B	Navy T2012N
-----------------------	--------------------	-----------------	----------------



EVERYONE

LADIES JACKET RANGE



BLOOMSBURY

Single Breasted Tailored Fit Jacket

FEATURES	UK SIZES	EU SIZES
2 button fastening	4 – 20 Petite	32 – 48 Petite
Tulip lapel	4 – 24 Reg	32 – 52 Reg
4 panel back detail	6 – 24 Long	34 – 52 Long

Light Grey	Charcoal	Black	Navy
J2000LG	J2000C	J2000B	J2000N



FINCHLEY

Single Breasted Tailored Fit Jacket

FEATURES	UK SIZES	EU SIZES
2 button fastening	4 – 20 Petite	32 – 48 Petite
Peak lapel	4 – 24 Reg	32 – 52 Reg
Centre back vent	6 – 24 Long	34 – 52 Long

Light Grey	Charcoal	Black	Navy
J2001LG	J2001C	J2001B	J2001N



HOXTON

Single Breasted Slim Fit Jacket

FEATURES	UK SIZES	EU SIZES
1 button fastening	6 – 16 Petite	34 – 44 Petite
Peak lapel	4 – 18 Reg	32 – 46 Reg
Centre back Vent	6 – 16 Long	34 – 44 Long

Charcoal	Black	Navy
J2002C	J2002B	J2002N



POPLAR

Waistcoat

FEATURES	SIZES
4 button fastening	Regular
Fabric back	(UK) 4 – 24
	(EU) 32 - 52

Light Grey	Charcoal	Black	Navy
V2007LG	V2007C	V2007B	V2007N

SIZE GUIDE

<b>Ladies</b>	
Petite	Women under 5'2" tall
Regular	Women between 5'3" & 5'9" tall
Long	Women over 5'10" tall

GARMENT INFORMATION

64%	Polyester	Weight	315 grams per linear metre
34%	Viscose	Durability	145,000 + Rubs on the Martindale test
2%	Lycra Weft Stretch	Aftercare	Machine Washable at 40°C
Fabric meets Oeko-Tex standard 100			

EVERYONE

LADIES TROUSERS



CHISWICK

Slim Fit Trousers

FEATURES	SIZES
Front fastening	Petite   Reg   Long
Slim leg	Unfinished
x1 Zip cash pocket	(UK) 4 – 24
Belt loops	(EU) 32 - 52
2 feature hip pockets	

Light Grey	Charcoal	Black	Navy
T2011LG	T2011C	T2011B	T2011N

WHITECHAPEL

Slim Fit Trousers

FEATURES	UK SIZES	EU SIZES
Front fastening	4 – 16 Petite	32 – 44 Petite
Slim leg	4 – 18 Reg	32 – 46 Reg
Key loop	4 – 18 Long	32 – 46 Long
2 feature hip pockets	4 – 18 Un Finished	32 – 46 Un Finished

Charcoal	Black	Navy
T2005C	T2005B	T2005N

MAIDAVALE

Tailored Fit Trousers

FEATURES	SIZES
Front fastening	Petite   Reg   Long
Curved hip pockets	Unfinished
Key loop	(UK) 4 – 24
Deep waistband	(EU) 32 - 52

Light Grey	Charcoal	Black	Navy
T2004LG	T2004C	T2004B	T2004N

FINSBURY

Classic Fit Trousers

FEATURES	SIZES
Front fastening	Petite   Reg   Long
Parallel leg	Unfinished
Key loop	(UK) 4 – 24
Deep waistband	(EU) 32 - 52

Light Grey	Charcoal	Black	Navy
T2003LG	T2003C	T2003B	T2003N

GARMENT INFORMATION

64%	Polyester	Weight	315 grams per linear metre
34%	Viscose	Durability	145,000 + Rubs on the Martindale test
2%	Lycra Weft Stretch	Aftercare	Machine Washable at 40°C
Fabric meets Oeko-Tex standard 100			

IN BETWEEN SIZES

Sizes 11 & 13 also available

SIZE GUIDE

Ladies	
Petite	Women under 5'2" tall
Regular	Women between 5'3" & 5'9" tall
Long	Women over 5'10" tall

INSIDE LEG MEASUREMENTS

Short	Regular	Long	Unfinished
29"IL 74CM	31"IL 79CM	34"IL 86CM	37"IL 94CM



Hem widths are based on size 8



EVERYONE

LADIES SKIRTS & DRESSES



BETHNAL

Dress

FEATURES

Knee length  
V neck detail  
Fully lined  
x2 Zip pockets  
Rear vent

SIZES

Regular  
(UK) 4 – 24  
(EU) 32 - 52

Light Grey D2010LG   Charcoal D2010C   Black D2010B   Navy D2010N



PRIMROSE

Dress

FEATURES

Knee length  
Shoulder darts  
Hip darts  
Fully lined  
Rear vent

SIZES

Regular  
(UK) 4 – 24  
(EU) 32 - 52

Light Grey D2008LG   Charcoal D2008C   Black D2008B   Navy D2008N



HOLBORN

Pencil Skirt

FEATURES

Pencil skirt  
Front seam detail  
Rear centre vent

SIZES

Regular (58cm | 23" length)  
Long (64cm | 25" length)  
(UK) 4 – 24  
(EU) 32 - 52

Light Grey S2006LG   Charcoal S2006C   Black S2006B   Navy S2006N

GARMENT INFORMATION

64%	Polyester	Weight	315 grams per linear metre
34%	Viscose	Durability	145,000 + Rubs on the Martindale test
2%	Lycra Weft Stretch	Aftercare	Machine Washable at 40°C
Fabric meets Oeko-Tex standard 100			

SIZE GUIDE

Ladies	
Petite	Women under 5'2" tall
Regular	Women between 5'3" & 5'9" tall
Long	Women over 5'10" tall

*Image Mens -*  
Titanium Tailored Fit Jacket  
Steel Trousers  
Charcoal

*Image Ladies -*  
Diamond Tailored Fit Jacket  
Quartz Tailored Fit Trousers  
Charcoal



ENDURANCE P.V.  
collection

The Endurance P.V. Collection “Simply Made To Perform At Work”. Extreme performance like Endurance but at a more competitive price. The Endurance P.V. Collection is the best performing collection of business tailored clothing you can buy at this price level.

Mid Weight 360 grams per linear metre	Available in 3 colours Charcoal Black Navy
---	---

67%	Polyester
33%	Viscose
Weight	360 grams per linear metre
Durability	100,000 + Martindale Test
Pilling	Grade 4/5
Aftercare	Machine Washable at 40°C

Fabric meets Oeko-Tex standard 100



*Image Right -*  
Steel Classic Fit Jacket  
Black

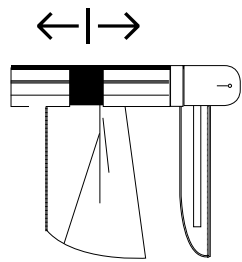
*Image Below -*  
Steel Classic Fit Jacket, Lapel Detail  
Black



ENDURANCE P.V.

*Image Right -*  
 Titanium Tailored Fit Jacket  
 Stone Tailored Fit Trousers  
 Navy

*Image Below -*  
 Stone - Easy Waist Tailored Fit Trousers  
 Charcoal



#### EASY WAIST CONSTRUCTION

A discreet elastic insert  
 to give waist ease  
 while retaining a formal  
 appearance. The easy waist  
 has no gap in the pockets  
 and is unique to Clubclass .





*Image Right -*  
Diamond Tailored Fit Jacket  
Quartz Tailored Fit Trousers  
Navy

*Image Below -*  
Quartz Trousers Zip Pocket & Key Loop Detail  
Charcoal



*Did you Know*

95% of the polyester used in  
our collections is made from  
recycled plastic bottles



ENDURANCE P.V

MENS FULL RANGE



STEEL

Single Breasted Classic Fit Jacket

**FEATURES**  
2 button fastening  
Side vents

UK SIZES	EU SIZES
34 – 50 Short	44 – 60 Short
34 – 54 Reg	44 – 64 Reg
36 – 50 Long	46 – 60 Long

Charcoal	Black	Navy
J9501C	J9501B	J9501N



TITANIUM

Tailored Fit Jacket

**FEATURES**  
2 button fastening  
Side vent

UK SIZES	EU SIZES
34 – 50 Short	44 – 60 Short
34 – 54 Reg	44 – 64 Reg
36 – 50 Long	46 – 60 Long

Charcoal	Black	Navy
J9502C	J9502B	J9502N



BORON

Waistcoat

**FEATURES**  
5 button fastening  
Fabric back

SIZES
Regular
(UK) 34 – 50
(EU) 44 – 60

Charcoal	Black	Navy
V9501B	V9501C	V9501N

GARMENT INFORMATION

Weight	360 grams per linear metre
Durability	100,000 + Martindale Test
Pilling	Grade 4/5
Aftercare	Machine Washable at 40°C
67%	Polyester
33%	Viscose

Fabric meets Oeko-Tex standard 100

SIZE GUIDE

Mens	
Short	Men under 5'6" tall
Regular	Men between 5'7" & 6'1" tall
Long	Men over 6'1" tall

INSIDE LEG MEASUREMENTS

Short	Regular	Long	Unfinished
29"IL 74CM	31"IL 79CM	33"IL 84CM	37"IL 94CM



STONE

Pleat Front, Classic Fit Trousers

FEATURES	SIZES
French bearer	Short   Reg
Belt loops	Long   Unfinished
2 Hip pockets	(UK) 28 – 50
1/2 Lined	(EU) 44 – 66

Charcoal	Black	Navy
T9502C	T9502B	T9502N



TUNGSTEN

Flat Front, Tailored Fit Trousers

FEATURES	SIZES
French bearer	Short   Reg
Belt loops	Long   Unfinished
2 Hip pockets	(UK) 28 – 50
1/2 Lined	(EU) 44 – 66

Charcoal	Black	Navy
T9501C	T9501B	T9501N

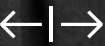
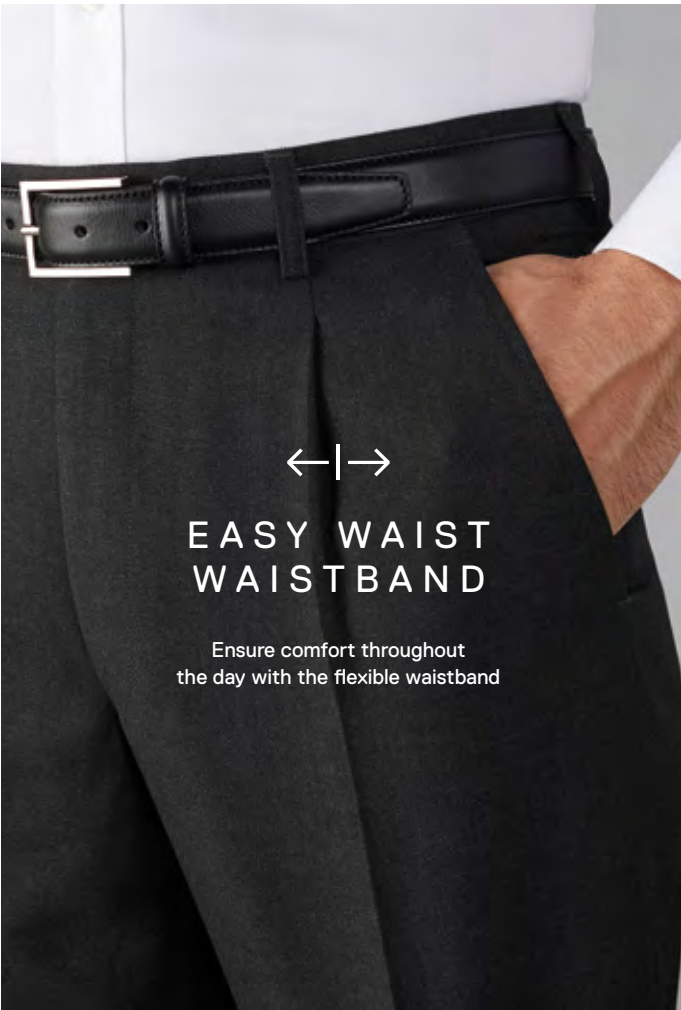


STONE - EASY WAIST

Pleat Front, Classic Fit Trousers

FEATURES	SIZES
French bearer	Short   Reg
Belt loops	Long   Unfinished
2 Hip pockets	(UK) 28 – 50
1/2 Lined	(EU) 44 – 66

Charcoal	Black	Navy
T9503C	T9503B	T9503N



EASY WAIST  
WAISTBAND

Ensure comfort throughout  
the day with the flexible waistband



ENDURANCE P.V

LADIES FULL RANGE



DIAMOND

Single Breasted Tailored Fit Jacket

FEATURES	UK SIZES	EU SIZES
2 button fastening	4 – 20 Petite	32 – 48 Petite
	4 – 24 Reg	32 – 52 Reg
	6 – 24 Long	34 – 52 Long

Charcoal	Black	Navy
J9500C	J9500B	J9500N



PORCELAIN

Waistcoat

FEATURES	SIZES
4 button fastening Fabric Back	Regular
	(UK) 6 – 24
	(EU) 34 – 52

Charcoal	Black	Navy
V9500C	V9500B	V9500N



QUARTZ

Tailored Fit Trousers

FEATURES	SIZES
Front fastening Curved hip pockets Key loop Deep waistband	Petite   Reg
	Long   Unfinished
	(UK) 4 – 24
	(EU) 34 – 52

Charcoal	Black	Navy
T9500C	T9500B	T9500N



COBALT

Pencil Skirt

FEATURES	SIZES
Pencil skirt Rear vent Bungee cord in left side seam x2 Zip pockets	Regular (58cm   23" length)
	(UK) 4 – 24   (EU) 32 - 52
	Long (64cm   25" length)
	(UK) 6 – 24   (EU) 34 - 52

Charcoal	Black	Navy
S9500C	S9500B	S9500N

GARMENT INFORMATION

67%	Polyester Viscose	Weight	360 grams per linear metre
33%		Durability	100,000 + Martindale Test
		Pilling	Grade 4/5
		Aftercare	Machine Washable at 40°C
		Fabric meets Oeko-Tex standard 100	

SIZE GUIDE

Ladies	
Petite	Women under 5'2" tall
Regular	Women between 5'3" & 5'9" tall
Long	Women over 5'10" tall

INSIDE LEG MEASUREMENTS

Short	Regular	Long	Unfinished
29"IL 74CM	31"IL 79CM	34"IL 86CM	37"IL 94CM



Hem widths are based on size 8



ENDURANCE  
collection

Simply made to perform at work. Too many Corporate Clothing providers believe merely adding the word Performance to their label makes for a viable performance tailored clothing solution. At Clubclass when we use the word performance we mean it. The Endurance Collection is the best performing collection of business tailored clothing you can buy.

Mid Weight 360 grams per linear metre	Available in 3 colours Charcoal Black Navy
---	---

*Mens -*  
Mens Docklands Classic Fit Jacket  
Stanford Classic Fit Trousers  
Black

*Ladies -*  
Ladies Bankside Classic Fit Jacket  
Chelsea Tailored Fit Trousers  
Black

70%	Polyester
30%	Wool
Weight	360 grams per linear metre
Durability	99,000 + Martindale Test
Pilling	Grade 4/5
Aftercare	Machine Washable at 40°C

Fabric meets Oeko-Tex standard 100





*Image Above -*  
Ritz Waistcoat  
Principle Classic Fit Trousers  
Navy

*Image Left -*  
Docklands Classic Fit Jacket  
Black

*Image Right -*  
Astoria Pencil Skirt  
Charcoal

*Image Right Below -*  
Camden Slim Fit Trousers  
Charcoal





ENDURANCE

MENS FULL RANGE



DOCKLANDS

Single Breasted Classic Fit Jacket

FEATURES	UK SIZES	EU SIZES
2 button fastening	34 – 50 Short	44 – 60 Short
Side vents	34 – 54 Reg	44 – 64 Reg
	36 – 50 Long	46 – 60 Long

Charcoal	Black	Navy
E4J0489	E4J0499	E4J0459



RITZ

Waistcoat

FEATURES	SIZES
5 button fastening	Regular
Fabric back	(UK) 34 – 40
	(EU) 44 – 60

Charcoal	Black	Navy
E5W0489	E5W0499	E5W0459

GARMENT INFORMATION

Weight	360 grams per linear metre
Durability	99,000 + Martindale Test
Pilling	Grade 4/5
Aftercare	Machine Washable at 40°C
70%	Polyester
30%	Wool

Fabric meets Oeko-Tex standard 100

SIZE GUIDE

Mens	
Short	Men under 5'6" tall
Regular	Men between 5'7" & 6'1" tall
Long	Men over 6'1" tall

INSIDE LEG MEASUREMENTS

Short	Regular	Long	Unfinished
29"IL 74CM	31"IL 79CM	33"IL 84CM	37"IL 94CM



STANFORD

Plain Front, Classic Fit Trousers

FEATURES	SIZES
French bearer	Short   Reg
Belt loops	Long   Unfinished
Hip pockets	(UK) 28 – 50
1/2 Lined	(EU) 44 – 66
Charcoal E5T0589	Black E5T0599
	Navy E5T0559



LISBON

Poly Viscose, Single Pleat Classic Fit Trousers

FEATURES	SIZES	FEATURES
French bearer	Short   Reg	70% Polyester
Belt loops	Long   Unfinished	30% Viscose
Hip pockets	(UK) 30 – 50	
1/2 Lined	(EU) 46 – 66	
	Black H4T0199	Navy H4T0159



PRINCIPLE

Single Pleat, Tailored Fit Trousers

FEATURES	SIZES
French bearer	Short   Reg
Belt loops	Long   Unfinished
Hip pockets	(UK) 28 – 50
1/2 Lined	(EU) 44 – 66
Charcoal E4T0489	Black E4T0499
	Navy E4T0459



PRINCIPLE - STRIPE

Single Pleat Formal Stripe Classic Fit Trouser

FEATURES	SIZES
French bearer	Short   Reg
Belt loops	Long   Unfinished
Hip pockets	(UK) 28 – 50
1/2 Lined	(EU) 44 – 66
	Grey Formal Stripe E4T0479

ENDURANCE

LADIES FULL RANGE



BANKSIDE

Single Breasted Classic Fit Jacket

FEATURES	UK SIZES	EU SIZES
3 button fastening	6 – 18 Petite	34 – 46 Short
	6 – 24 Reg	34 – 52 Reg
	6 – 24 Long	34 – 52 Long

Charcoal	Black	Navy
E5J1589	E5J1599	E5J1559



ADELPHI

Waistcoat

FEATURES	SIZES
4 button fastening	Regular
Fabric back	(UK) 6 – 24
	(EU) 34 – 52

Charcoal	Black	Navy
E5V0489	E5V0499	E5V0459

GARMENT INFORMATION

Weight	360 grams per linear metre
Durability	99,000 + Martindale Test
Pilling	Grade 4/5
Aftercare	Machine Washable at 40°C
Composition	70% Polyester 30% Wool

Fabric meets Oeko-Tex standard 100

SIZE GUIDE

Ladies	
Petite	Women under 5'2" tall
Regular	Women between 5'3" & 5'9" tall
Long	Women over 5'10" tall



Hem widths are based on size 8

INSIDE LEG MEASUREMENTS

Short	Regular	Long	Unfinished
29"IL 74CM	31"IL 79CM	34"IL 86CM	37"IL 94CM



CAMDEN

Slim Fit Trousers

FEATURES	SIZES
Front fastening	Petite   Reg
2 Hip pockets	Long   Unfinished
	(UK) 6 – 24
	(EU) 34 – 52

Charcoal	Black	Navy
E6LT489	E6LT499	E6LT459



CHELSEA

Tailored Fit Trousers

FEATURES	SIZES
Cash pocket	Petite   Reg
Front fastening	Long   Unfinished
Belt loops	(UK) 6 – 24
	(EU) 34 – 52

Charcoal	Black	Navy
E4LT489	E4LT499	E4LT459



BROMPTON

Classic fit trousers

FEATURES	SIZES
Cash pocket	Petite   Reg
2 Hip pockets	Long   Unfinished
Flared leg	(UK) 6 – 24
Low waist	(EU) 34 – 52

Charcoal	Black	Navy
E5LT489	E5LT499	E5LT459



ASTORIA

Pencil skirt

FEATURES	SIZES
Pencil skirt	Regular (58cm   23" length)
Rear vent	Long (64cm   25" length)
Bungee cord in left side seam	(UK) 6 – 24
	(EU) 34 – 52

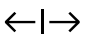
Charcoal	Black	Navy
E5S1289	E5S1299	E5S1259







THE INTELLIGENT TROUSERS

The intelligent choice for hybrid formal trousers at work

 **Flexible Waistband**  
The trousers have a waistband designed to move with the wearer to ensure comfort throughout the working day

 **Enhanced Components**  
Extra strong zip, thread and waistband for great day in day out performance.

 **Extremely Durable Fabric**  
Tested for demanding environments the fabric is engineered to work just as hard as the wearer day in day out.

 **Sizes & Colours**  
Available in a range of sizes for men and women in Navy or Black.

Perfect for men and women who work in demanding environments. From security guards to traffic wardens, warehouse staff and car salesmen. The intelligent trousers are designed to look great, day in day out, wash after wash.

Using a sustainable, durable fabric, along with enhanced zips, buttons and a flexible waistband, Clubclass have developed the Intelligent Trousers to work as hard as the wearer.

GARMENT INFORMATION

48% Cotton	Weight	360 grams per linear metre
38% Polyester	Durability	99,000 + Martindale Test
14% Sorona	Pilling	Grade 4/5
	Aftercare	Machine Washable at 60°C

Fabric meets Oeko-Tex standard 100





INTELLIGENT TROUSERS

FULL RANGE



LADIES

Trouser

**FEATURES**  
Flexible waistband  
Durable stretch fabric  
Enhanced components

**SIZES**  
Petite | Reg | Long  
Unfinished  
(UK) 6 – 24  
(EU) 34 – 52

Black T2006B    Navy T2006N

MENS

Trouser

**FEATURES**  
Flexible waistband  
Durable stretch fabric  
Enhanced components

**SIZES**  
Short | Reg | Long  
Unfinished  
(UK) 28 – 50  
(EU) 44 – 66

Black T1004B    Navy T1004N

SIZE GUIDE

Mens		Ladies	
Short	Men under 5'6" tall	Petite	Women under 5'2" tall
Regular	Men between 5'7" & 6'1" tall	Regular	Women between 5'3" & 5'9" tall
Long	Men over 6'1" tall	Long	Women over 5'10" tall

INSIDE LEG MEASUREMENTS

Mens Short	Mens Reg	Mens Long	Mens Unfinished
29"IL 74CM	31"IL 79CM	33"IL 84CM	37"IL 94CM
Ladies Short	Ladies Reg	Ladies Long	Ladies Unfinished
29"IL 74CM	31"IL 79CM	34"IL 86CM	37"IL 94CM



Image Below -  
Ladies Wimbledon Waistcoat  
Ladies Ascot Tailored Fit Trousers  
Black

Mens Oval Waistcoat  
Mens Olympia Tailored Fit Trousers  
Black



EVENTS  
collection

A collection of black trousers, waistcoats and skirts. Ideal for the demanding environments of hospitality, facilities management and service sectors. It is designed to look good day in, day out, wash after wash. This fabric is currently worn by 1,000's of people everyday; it is truly tried and tested.

Light Weight 280 grams per linear metre	Available in 1 colour Black
---	-----------------------------------

100% Superfine Natural  
Stretch Polyester

Weight	280 grams per linear metre
Durability	140,000 + Rubs on the Martindale test
Pilling	Grade 4/5
Aftercare	Machine washable at 40°C

Fabric meets Oeko-Tex standard 100

EVENTS

MENS FULL RANGE



OVAL

Waistcoat

**FEATURES**  
5 button fastening  
lining back with back  
strap and buckle

**BLACK**  
W5007B

<b>XS</b>	<b>S</b>	<b>M</b>	<b>L</b>	<b>XL</b>	<b>XXL</b>	<b>XXXL</b>
34/36	38	40	42	44/46	48/50	52/54



OLYMPIA

Plain Front Tailored Fit Trousers

**FEATURES**  
French bearer  
Belt loops  
2 Hip pockets  
Key loop

**SIZES**  
Short | Reg  
Long | Unfinished  
(UK) 26 – 50  
(EU) 42 – 66

Black  
T5002B



PRINCIPLE - STRIPE

Single Pleat Formal Stripe Classic Fit Trousers

**FEATURES**  
French bearer  
Belt loops  
2 Hip pockets  
Key loop  
1/2 Lined to the knee

**SIZES**  
Short | Reg  
Long | Unfinished  
(UK) 28 – 50  
(EU) 44 – 66

**COMPOSITION**  
70% Polyester  
30% Wool

**Grey Formal Stripe**  
E4T0479

INSIDE LEG MEASUREMENTS

<b>Short</b>	<b>Reg</b>	<b>Long</b>	<b>Unfinished</b>
29"IL 74CM	31"IL 79CM	33"IL 84CM	37"IL 94CM

GARMENT INFORMATION

Weight	280 grams per linear metre
Durability	140,000 + Martindale Test
Pilling	Grade 4/5
Aftercare	Machine Washable 40°C
Fabric	100% Polyester

MENS SIZE GUIDE

Short	Men under 5'6" tall
Regular	Men between 5'7" & 6'1" tall
Long	Men over 6'1" tall



EVENTS

LADIES FULL RANGE



WIMBLEDON

Waistcoat

**FEATURES**  
4 button fastening  
lining back with back  
strap and buckle

**BLACK**  
V5008B

<b>XS</b>	<b>S</b>	<b>M</b>	<b>L</b>	<b>XL</b>	<b>XXL</b>
4/6	8/10	12	14/16	18/20	22/24



ASCOT

Tailored Fit Trouser

**FEATURES**  
Front fastening  
Slim leg  
Key loop  
2 feature pockets

**SIZES**  
Petite | Reg  
Long | Unfinished  
(UK) 4 – 24  
(EU) 32 – 52

Black  
T9006B



GROSVENOR

Skirt

**FEATURES**  
Pencil skirt  
Rear centre back vent  
Bungee cord

**SIZES**  
Regular (58cm | 23" length)  
Long (64cm | 25" length)  
(UK) 4 – 24  
(EU) 32 – 52

Black  
S5004B

INSIDE LEG MEASUREMENTS

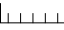
Short	Reg	Long	Unfinished
29"IL 74CM	31"IL 79CM	34"IL 86CM	37"IL 94CM

GARMENT INFORMATION

Weight	280 grams per linear metre
Durability	140,000 + Martindale Test
Pilling	Grade 4/5
Aftercare	Machine Washable 40°C
Fabric	100% Polyester

LADIES SIZE GUIDE

Petite	Women under 5'2" tall
Regular	Women between 5'3" & 5'9" tall
Long	Women over 5'10" tall

 Hem widths are based on size 8



“Knowing that the clothing made by Clubclass is tested to destruction and is worn by 100,000s of professionals everyday is reassuring when I choose tailoring for my work place.”



MENS TROUSER SHAPES

Clubclass have designed 3 simple styles that work across our collections. These styles are designed to suit all shapes and sizes.



SLIM FIT

This is an all round slimmer fitting trouser that reflects the current fashion on the high street for slim trousers.



TAILORED FIT

A contemporary fit, that sits nicely between the slim and the classic fit trouser.



CLASSIC FIT

This is a classic everyday trouser with more room than the tailored fit.



LADIES TROUSER SHAPES

Clubclass have designed 3 simple styles that work across our collections. These styles are designed to suit all shapes and sizes.



SLIM FIT

A slimmer fitting trouser for those who want a close fitting trouser.



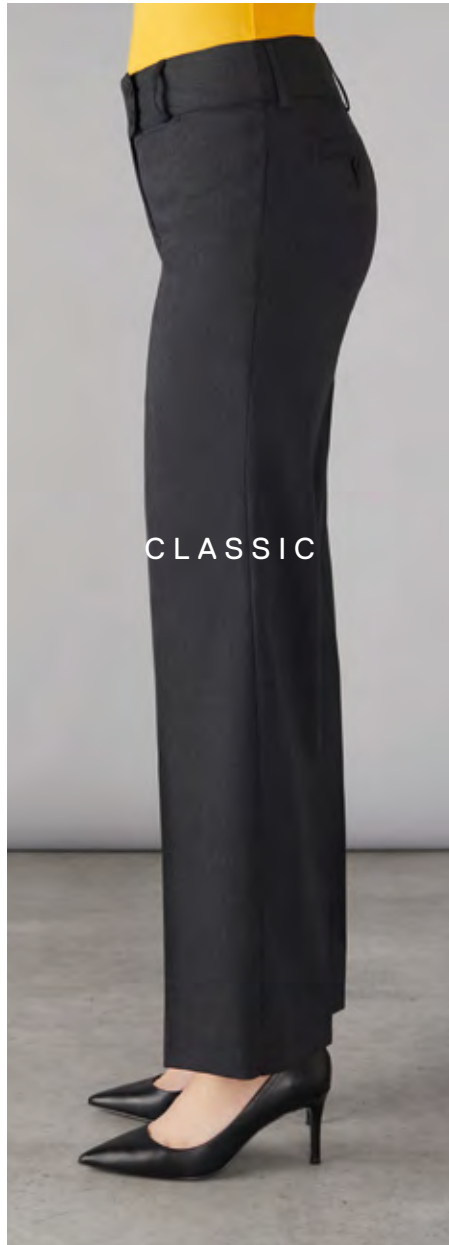
TAILORED FIT

A contemporary fitting trouser that fits nicely between slim fit and the more classic style.



CLASSIC FIT

A more comfortable fit for women who want more room in their trousers.



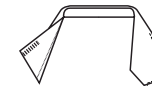


# The Architecture of fine tailored clothing for the workplace

Clubclass tailored clothing has much in common with an architectural design process. All garments are a combination of technical know how and fine craftsmanship. Clubclass engineer each piece of clothing from the inside out. Each jacket, trouser and dress has to look fabulous and fit but it's the technical expertise that sets them apart. Canvas, tape and trims are the skeleton of our clothing. Some techniques, exclusively used by Clubclass technicians, give robust performance, reliability, easy wear and a beautiful finish.



## SOME OF THE BUILDING BLOCKS THAT GO TO MAKE UP A CLUBCLASS GARMENT



### THE COLLAR

If you open up the collar you will notice an extra tape that is used to help stiffen the collar. A unique but important factor.



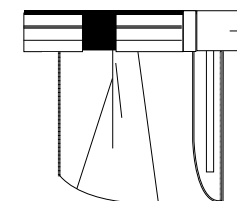
### THE LAPEL

The lapels are carefully crafted and rolled to give shape and depth for a clean crisp sharp suit.



### THE CANVAS

From the worlds best suppliers create a structured look but it is also durable and flexible allowing the jacket to naturally conform to your body shape.



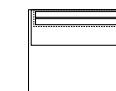
### EASY WAIST CONSTRUCTION

A discreet elastic insert to give waist ease while retaining a formal appearance. The easy waist has no gap in the pockets and is unique to Clubclass.



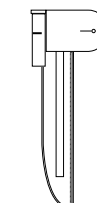
### THE BUTTONS

Dyed through buttons that look good for years without fade.



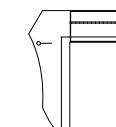
### THE POCKETS

Precision made to look good and stay in shape for the life of the garment.



### BRANDED ZIPS

Branded zips for industry leading reliability.



### FRENCH BEARER

Gives a "clean" look when fastened and stays in shape through long wear.

**Head Office**

8A The Linen Green,  
Moygashel,  
County Tyrone,  
BT71 7HB

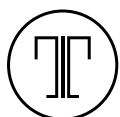
Tel: +44 (0) 28 8772 6876

**Dublin Office**

19 Valentia Road,  
Drumcondra,  
Dublin 9, Ireland

Tel: 048 8772 6876

[sales@tailoredimage.com](mailto:sales@tailoredimage.com)  
[www.tailoredimage.com](http://www.tailoredimage.com)



TAILORED  
IMAGE

...More than a Uniform